



Australian Government
Australian Fisheries Management Authority



AFMA CATCHWATCH

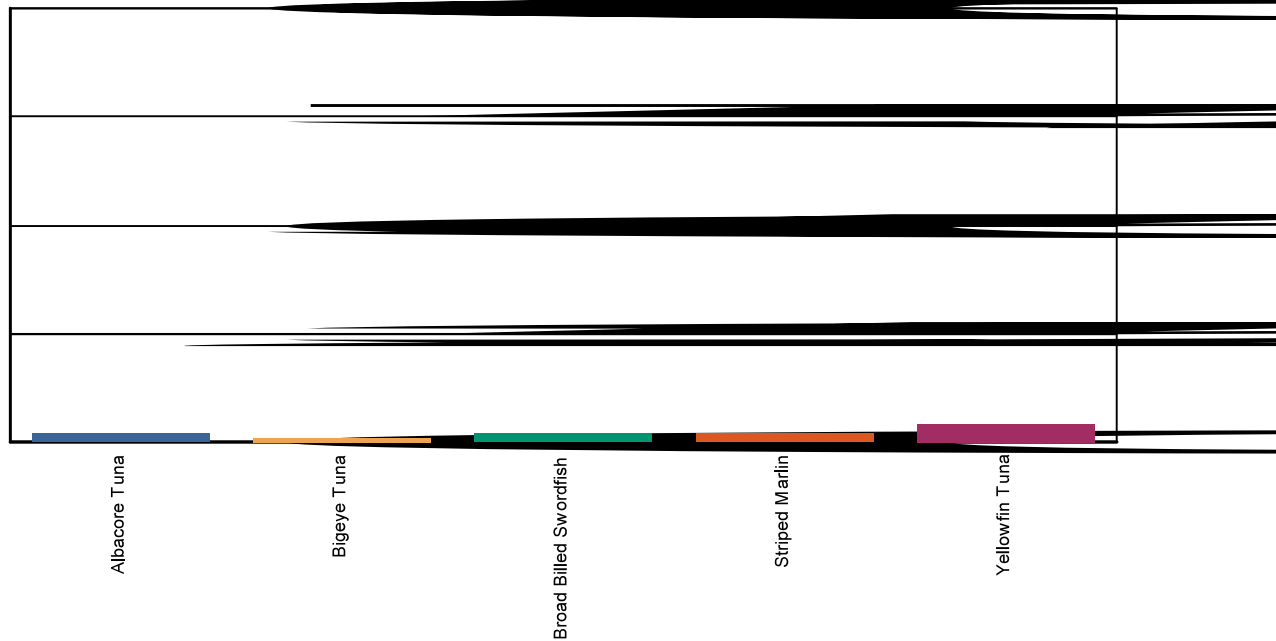
A REPORT FROM THE AUSTRALIAN FISHERIES MANAGEMENT AUTHORITY

Eastern Tuna and Billfish Fishery 2021

12 February 2021

Species Name	Agreed TAC	TAC After over/undercatch	Catch	Available TAC	% TAC Caught	Quota Available
Albacore Tuna	2500000	2749225	51281	2697944	2%	98%
Bigeye Tuna	1056000	1161588	7464	1154124	1%	99%
Broad Billed Swordfish	1163000	1284656	22720	1261936	2%	98%
Striped Marlin	351000	384293	6369	377925	2%	98%
Yellowfin Tuna	2400000	2619080	112582	2506498	4%	96%

Total % TAC caught



Note :

- * All figures are in kg.
- * Species Oreo include Spikey, Warty, Black and Rough Oreo.
- * The agreed TAC figures are for the period 01 January 2021 to 31 December 2021

www.afma.gov.au

AFMADIRECT 1300 723 621

AFMA Catch Watch is available at www.afma.gov.au. While care is taken to ensure the accuracy of information, readers should not base business decisions or actions solely upon the information contained within.

© Commonwealth of Australia | ISSN 1449-7697 | ABN 8109 849 7617