



Northern Prawn Fishery Data Summary 2012

Author: Matt Barwick
NPF Industry Pty Ltd

Northern Prawn Fishery Data Summary 2012

NPF INDUSTRY PTY LTD on behalf of Australian Fisheries Management Authority
Matt Barwick
Northern Prawn Fishery Data Summary 2012
April 2013

AFMA
Level 6
73 Northbourne Ave
Civic ACT 2600

© Commonwealth of Australia 2012

ISSN - 2202-3321

This report should be cited as: Barwick, M. (2013). Northern Prawn Fishery Data Summary 2013. NPF Industry Pty Ltd, Australia.

This work is copyright. Apart from any use as permitted under the Copyright Act 1968, no part may be reproduced by any process without prior written permission from the Commonwealth available from AusInfo. Requests and inquiries concerning reproduction and rights should be addressed to the Manager, Legislative Service, AusInfo, GPO Box 1920, Canberra ACT 2601

Published by the Australian Fisheries Management Authority

STREET ADDRESS

Level 6
73 Northbourne Ave
Civic ACT 2600
Telephone: (02) 6225 5555
Facsimile: (02) 6225 5439

POSTAL ADDRESS ENQUIRIES

Box 7051
Canberra BC
ACT 2610

Cover pictures courtesy of Matt Barwick, NPF Industry Pty Ltd and Rhys Arangio, Austral Fisheries



Northern Prawn Fishery Data Summary 2012

Preface

Scope of the Report

This document summarises catch and effort information for the Northern Prawn Fishery (NPF) in 2012, including data relating to interactions with Threatened, Endangered and Protected (TEP) species. The data summary provides an important mechanism for providing feedback to stakeholders on logbook data received by AFMA. In addition, the process of data extraction and analysis assists in identifying data quality issues where they exist and also assists in ensuring that data needs for fisheries management continue to be met.

AFMA has produced data summary reports for the NPF on an annual basis since 1999. As part of the AFMA/NPF co-management arrangements in the NPF, this is the fourth year NPF Industry Pty Ltd has been responsible for development of the data summary.

Acknowledgements

Production of this report was made possible through the efforts of the skippers, vessel owners and Crew Member Observers of the NPF. Skippers supplied daily logbook information and vessel owners completed Season Landing Returns. Crew Member Observers supplied information on a voluntary basis whilst undertaking their daily duties, on interactions with TEP species and species identified as 'At-Risk' through the Ecological Risk Assessment process. Thanks to staff from D&S Datafix for processing of Log sheets and Season Landing Returns. Thanks also to staff from AFMA's Intelligence, Planning & Data Management section for their assistance with data management activities.

If you have any comments or queries on this, or any other data summaries, please do not hesitate to call:

Matt Barwick, NPF Industry Pty Ltd
Phone: 0422 752 789
Email: m.barwick@npfindustry.com.au

Or

Fiona Hill, Manager Northern Prawn, Torres Strait Prawn, Western Trawl Fisheries, AFMA
Phone: (02) 6225 5371
Email: fiona.hill@afma.gov.au

Also note that this Data Summary is available on [AFMA's website](http://www.afma.gov.au/managing-our-fisheries/fisheries-a-to-z-index/northern-prawn-fishery/) (www.afma.gov.au/managing-our-fisheries/fisheries-a-to-z-index/northern-prawn-fishery/).



Table of Contents

Preface	3
Scope of the Report	3
Acknowledgements.....	3
Table of Contents.....	4
Introduction	6
Description of the Northern Prawn Fishery	6
Area of Fishery	6
Fishing Methods.....	7
Management Information.....	7
Species	8
Data Collection Program	8
Methods Used for Preparing Data Summary	8
Banana and Tiger Prawn Fishery Components	9
Catch and Effort Data for the Northern Prawn Fishery	9
Catch.....	9
Catch by week.....	11
Effort	12
Nominal and effective effort	12
Catch Rate.....	13
Catch, effort and catch rate by month.....	13
Vessel and Gear Information	14
Vessel length.....	14
Distribution of catch by vessel	15



Average catch per vessel	16
Fishing Gear	17
Catch and Effort by Statistical Area in the Northern Prawn Fishery	17
All areas	17
Weipa	19
Keerweer	21
Edward.....	23
Mitchell.....	25
Bold	27
Sweers	29
Mornington.....	31
Limmen Bight.....	33
Groote	35
Gove	37
Arnhem.....	39
Port Essington	41
Melville	43
Fog Bay	45
Bonaparte	47
Interactions with TEP Species in the Northern Prawn Fishery	49
Turtle interactions	49
Sea snake interactions	51
Scientific Observer and Crew Member Observer Coverage.....	52
State/Territory Specific Data.....	53
Retained Byproduct in the Northern Prawn Fishery by State/Territory Waters.....	55



Introduction

The Northern Prawn Fishery Data Summary 2012 contains catch and effort statistics by prawn species, area, time and fishery. Comprehensive bycatch information is also included for the information of stakeholders and to meet AFMA's obligations under Offshore Constitutional Settlement agreements with Queensland, the Northern Territory and Western Australia. Interactions with Threatened, Endangered and Protected (TEP) species, including turtles and sea snakes are also reported.

Description of the Northern Prawn Fishery

Area of Fishery

The Northern Prawn Fishery (NPF) is located off Australia's northern coast, and extends from the low water mark to the outer edge of the Australian Fishing Zone (AFZ) in the area between Cape York in Queensland and Cape Londonderry in Western Australia (Figure 1).

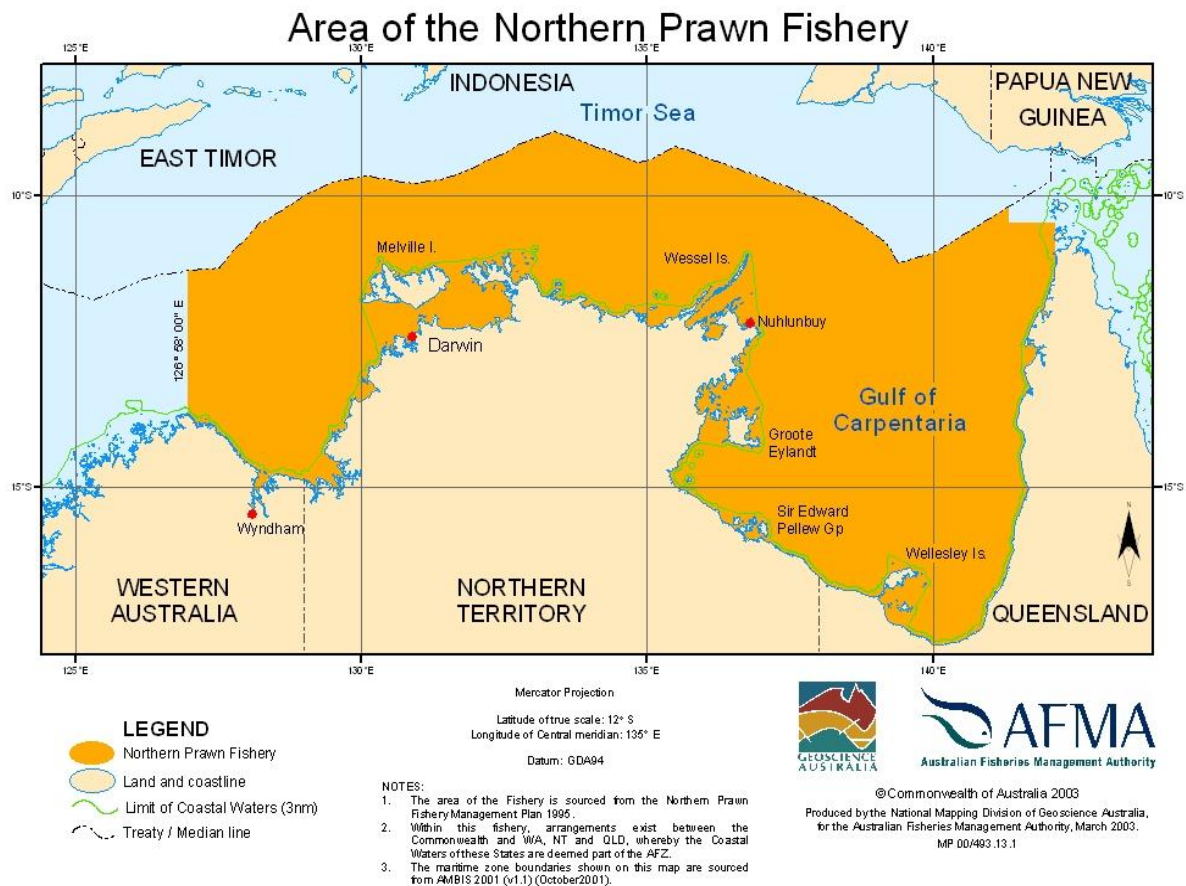


Figure 1: Northern Prawn Fishery Management Area.



Fishing Methods

Prawn trawling is an active fishing method which involves towing a conical-shaped net spread open by two or four steel or timber otter boards over the seabed, commonly called otter trawling. Ground chains are also used on the nets to stimulate prawns into the trawl mouth. Vessels in the NPF may tow a range of nets in a variety of configurations. These are regulated by the *Northern Prawn Fishery Management Plan 1995* (the Management Plan) and relevant Determinations and Directions. In addition to the main nets, a small “try-net” is also used to test the potential catches for a given area. All trawl nets (other than try-nets) in the NPF are required to be fitted with approved Turtle Excluder Devices (TEDs) and Bycatch Reduction Devices (BRDs).

Most of the vessels in the NPF are purpose built from steel and range in length from 17 m to 28 m. All NPF boats have modern, sophisticated catch handling, packing and freezing capabilities as well as wet (brine) holding facilities. All vessels use electronic aids such as colour echo sounders and Global Positioning Systems (GPS) and plotters. Satellite phones and fax equipment is used by most vessels and many have introduced on-board computing facilities, as well as electronic log books. All vessels are required to have a Vessel Monitoring System (VMS) installed.

Management Information

The NPF is currently managed through a combination of input controls (limited entry, seasonal closures, permanent area closures, gear restrictions and operational controls) that are implemented under the Management Plan.

The Management Plan provides for the granting of fully transferable Statutory Fishing Rights (SFRs) that determine the number of trawlers that may operate (Class B SFRs) and the amount of gear (gear SFRs) used in the Fishery. In 2001, the Management Plan was amended to allow the total gear pool to be set by a Determination. The gear SFR is set as an amount of headrope length, which can be varied depending on the stock status and economic grounds.

In 2002 measures to reduce effort by 40% on tiger prawn stocks were introduced. This was achieved by shortening the seasons and a 25% reduction in the value of an SFR from 24 August 2002. This resulted in a reduction in Class B SFRs from 119 to 102.

In 2006 the Commonwealth Government Structural Adjustment Package removed 42 Class B SFRs and approximately 30% of the effective effort from the NPF. The fishery is now composed of 52 vessels, which is the level estimated by the Australian Bureau of Agricultural and Resource Economics and Science (ABARES) to reach Maximum Economic Yield (MEY) in the NPF.

In 2007, the industry formed a company 'NPF Industry Pty Ltd' (NPFi) that incorporates around 95% of the fishery gear SFR holders.

In 2008, following a recommendation from the Northern Prawn Fishery Management Advisory Committee (NORMAC) there was an 8% increase in effort in the 2008 tiger prawn season. This translated into NPF gear SFRs increasing in value from 5.625 cm to 7.481 cm and Concessions Holders were permitted to use quad gear (with a 10% penalty applied).

In 2009 the length of the tiger prawn season was increased by four weeks based on the outputs of the 2008 tiger prawn stock assessment, resulting in a season commencing 25 July and closing 19 December. This was the first time since the introduction of the mid-year closure in 1987 that the tiger prawn season commenced prior to 1 August.



In 2011 the banana season was extended by two weeks, commencing on 1 April and concluding on 24 June 2011. The season extension was recommended by NORMAC to enable industry to make optimal use of an expected large available biomass of banana prawns resulting from favorable environmental conditions. The tiger season commenced on 1 August and concluded one week early, on 20 November (though tiger prawns were able to be targeted from 1 May). The early closure was triggered by low catches, to protect stocks and prevent economic losses.

In 2012, the banana season extended from 31 March UTC to 15 June UTC, and the tiger prawn season extended from 01 August UTC to 29 November UTC (though targeting of tiger prawns was permitted from 1 May until 15 June during the banana prawn season). There were 76 days available to fish during the first season and 121 during the second season (a total of 197), the same number of total fishing days as 2011.

A new rule was implemented during the 2012 banana season, in which the fishery would be closed to banana fishing west of 138°, and closed to daylight trawling east of this location to prevent banana prawn targeting, if average daily catches did not meet a trigger of 500 kg per boat/day during a two week reporting period. Previously not meeting the trigger resulted in early season closure, however it was noted that the tiger prawn stock assessment indicated that the tiger prawn fishery was being exploited below its optimal level, and this would enable fishers to continue to target brown and grooved tiger prawns.

Species

The NPF targets nine commercial species of prawns including white banana (*Fenneropenaeus merguensis*), red-legged banana (*F. indicus*), brown tiger (*Penaeus esculentus*), grooved tiger (*P. semisulcatus*), blue endeavour (*Metapenaeus endeavouri*), and red endeavour (*M. ensis*). Scampi, squid, scallops and bugs are also taken as by-product.

Data Collection Program

NPF operators are required to complete the 'Northern and Torres Strait Prawn Fisheries Daily Fishing Log' (NP16), a paper logbook on a daily basis. Alternatively, NPF operators can use an electronic version (e-log). In 2012 approximately 46 operators during the banana prawn season and 44 operators during the tiger prawn season used e-logs. Both paper logbook and e-log data is included in this data summary.

Methods Used For Preparing Data Summary

The data used to prepare the Northern Prawn Fishery Data Summary is comprised of logbook information (NP16 and e-log) submitted by NPF skippers and the seasonal landing returns (SLR-T01) completed by SFR holders. This information is stored by AFMA on the Northern Prawn, Kimberley Prawn and Torres Strait Prawn database.

The data used in this summary was extracted during April 2013 after making every effort to reconcile the data provided by skippers with that obtained from vessel owners. This was to ensure that the logbook data and the landings figures approximated each other as closely as possible.

The banana prawn catches recorded in the logbooks from 53 vessels (total number of vessels fishing at any one time is limited to 52, however one boat SFR was used by two different vessels during 2012). Logbook data was found to be within 2% of the catch recorded in the seasonal



landing returns for the banana prawn season. On average logbook catches of banana prawns were underestimated by 1.6% when compared to Seasonal Landing Returns (SLR), with the greatest discrepancy being 15% (five vessels) for the banana prawn season. The tiger prawn catches recorded in the logbooks from 53 vessels were within 2% of catches recorded in the SLR for the tiger prawn season. On average logbook catches of tiger prawns were underestimated by 0.2% when compared to SLRs, with the greatest discrepancy for a single vessel being 31% (of a relatively small total catch) for the tiger prawn season.

The catch and effort estimates in Table 1, Figure 2 and Figure 6 were derived from a combination of logbook and SLR figures. The remainder of the tables and figures in the summary represent logbook data only. This may cause discrepancies between totals. Minor discrepancies may also occur due to rounding of values.

Banana and Tiger Prawn Fishery Components

Fishery statistics have been split into banana and tiger prawn fishery components according to the composition of the catch in logbook records. If half or more of a vessel's daily catch was banana prawns or there was no prawn catch and the vessel was fishing, the vessel was defined as operating in the banana prawn fishery on that day; otherwise it was defined as operating in the tiger prawn fishery. Fishing days where vessels have been searching, but have not supplied details of the area searched, have not been included in the effort figures.

Banana prawn fishery catch is the catch of all species (bananas + tigers + endeavours + kings) when a vessel is defined as fishing in the banana prawn fishery. Likewise, tiger prawn fishery catch is the catch of all species when a vessel is defined as operating in the tiger prawn fishery.

Catch and Effort Data for the Northern Prawn Fishery

Catch

The total NPF prawn catch for 2012 was 6,601 t compared with 8,335 t in 2011 (Table 1). The catch of banana prawns in 2012 (4,901 t) was below that of the previous year (7,141 t) (Figure 2). The catch of tiger prawns increased by 60.6%, from 749 t in 2011 to 1,203 t in 2012. Catches of endeavour prawns increased by 11.4%, from 437 t in 2011 to 487 t in 2012 (Table 1). In 2012 catches of king prawns increased from 8 t in 2011 to 11 t in 2012.

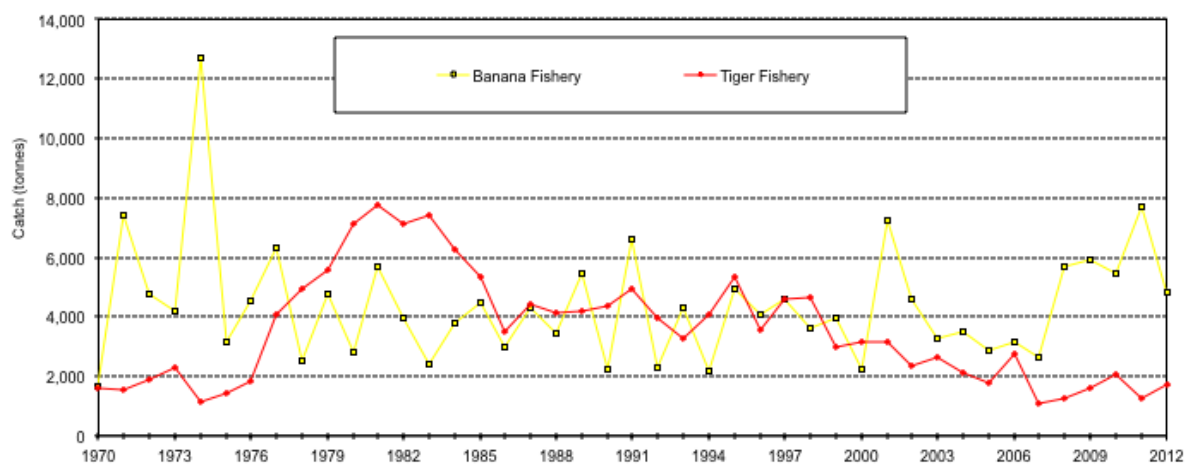


Figure 2: Catch in the banana and tiger prawn fisheries between 1970 and 2012.

Table 1: Annual reconciled landings, effort and vessel number in the NPF from 1970 to 2012

Year	Banana (t)	Tiger (t)	Endeavour (t)	King (t)	Total Catch (t)	No. of Vessels	Banana Fishery Effort (days)	Tiger Fishery Effort (days)
1970	1,702	1,138	417	0	3,257	191	2,041	5,818
1971	7,364	1,183	400	0	8,948	169	5,571	6,057
1972	4,801	1,380	472	0	6,654	180	4,327	7,380
1973	4,226	1,672	594	0	6,492	217	4,917	7,362
1974	12,711	666	434	4	13,815	196	7,537	3,439
1975	3,160	973	444	6	4,583	107	5,361	6,010
1976	4,519	1,118	675	5	6,319	145	7,238	6,660
1977	6,345	2,900	1,125	28	10,398	193	7,257	11,673
1978	2,535	3,599	1,240	82	7,456	237	5,569	18,749
1979	4,775	4,218	1,213	94	10,300	240	7,328	17,791
1970-'79average	5,214	1,885	701	22	7,822	188	5,715	9,094
1980	2,835	5,124	1,891	111	9,964	269	8,391	30,594
1981	5,672	5,559	2,073	95	13,400	286	11,524	31,895
1982	3,875	4,891	2,124	144	11,036	271	8,751	32,956
1983	2,382	5,751	1,488	207	9,831	254	6,856	34,551
1984	3,770	4,525	1,714	83	10,095	252	5,932	32,447
1985	4,469	3,592	1,671	77	9,811	231	6,946	26,516
1986	2,935	2,682	748	85	6,451	238	7,132	26,669
1987	4,257	3,617	772	65	8,713	234	7,954	22,478
1988	3,381	3,458	669	81	7,591	222	6,655	26,264
1989	5,466	3,173	909	85	9,636	223	7,439	27,036
1980-'89average	3,904	4,237	1,406	103	9,653	248	7,758	29,141
1990	2,221	3,550	735	128	6,636	200	5,044	25,525
1991	6,605	3,987	879	81	11,554	172	6,515	20,744
1992	2,254	3,084	880	47	6,267	170	5,132	21,789
1993	4,292	2,515	733	35	7,572	127	6,299	16,019
1994	2,157	3,162	872	72	6,263	128	4,955	18,592
1995	4,961	4,125	1,150	58	10,294	125	4,880	16,834
1996	4,078	2,311	1,235	41	7,665	127	5,525	16,635
1997	4,587	2,694	1,870	51	9,202	129	5,476	15,385
1998	3,569	3,218	1,322	20	8,123	130	5,301	18,003
1999	3,904	2,136	885	21	6,947	129	5,639	12,675
1990-'99average	3,863	3,078	1,056	55	8,052	144	5,477	18,220
2000	2,195	2,190	958	13	5,335	121	3,697	12,736
2001	7,245	1,983	1,157	4	10,389	118	6,247	10,440
2002	4,577	1,943	411	5	6,936	114	4,148	8,718
2003	3,238	2,222	435	4	5,898	97	4,114	8,503
2004	3,520	1,767	396	3	5,686	96	3,985	7,793
2005	2,901	1,744	281	20	4,946	89	3,364	7,967
2006	3,117	1,802	363	28	5,310	77	3,283	6,983
2007	2,902	1,192	196	20	4,310	51	2,696	4,829
2008	5,816	1,021	213	7	7,058	53	3,347	4,556
2009	5,881	1,250	346	7	7,483	55	3,095	4,889
2000-'09average	4,139	1,711	476	11	6,335	87	3,798	7,741
2010	5,642	1,628	429	12	7,711	52	3,146	4,898
2011	7,141	749	437	8	8,335	55	3,440	4,143
2012	4,901	1,203	487	11	6,601	52	2,526	5,521

* Note: Catch data is extracted from SLRs.



Catch by week

Figures 3 (a), (b) and (c) show the catch of banana and tiger prawns by week during 2010, 2011 and 2012. Highest banana prawn catches were recorded in the first week of 2012. Banana prawn catches in 2012 experienced a steady decline through the 12 week season, with the exception of a slight increase (3.8%) in catches during week four.

In 2012, catches of tiger prawns were highest during weeks 8 and 9 of tiger season, at 100.1 t and 100.6 t, respectively.

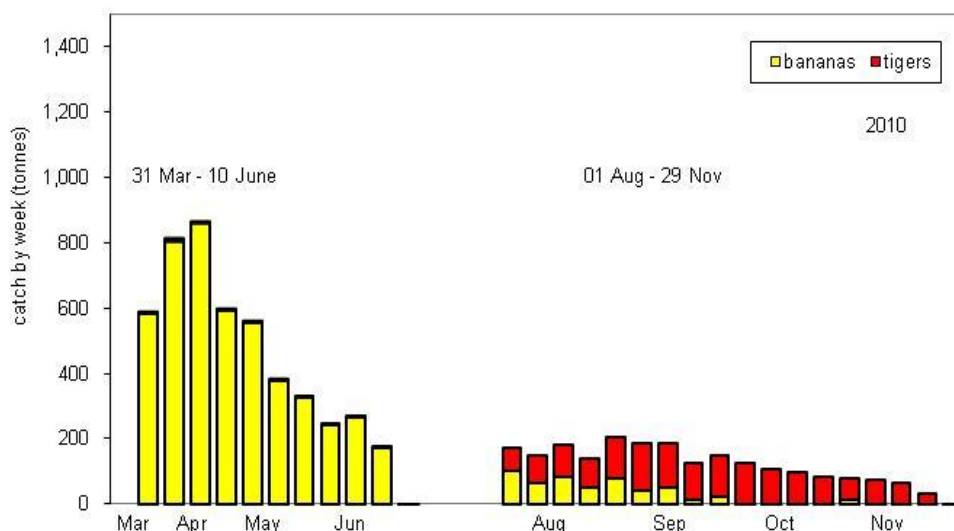


Figure 3a: Weekly catches of banana and tiger prawns (t) in the NPF in 2010.

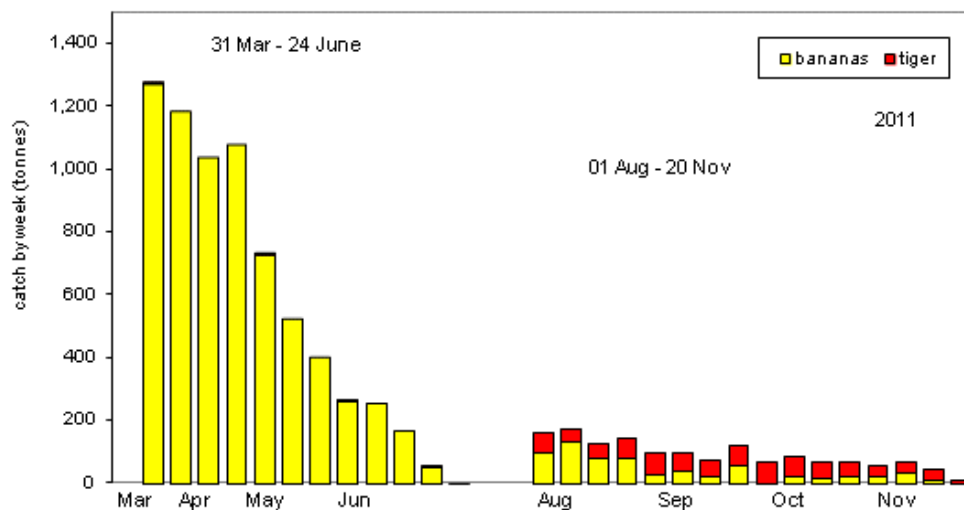


Figure 3b: Weekly catches of banana and tiger prawns (t) in the NPF in 2011.

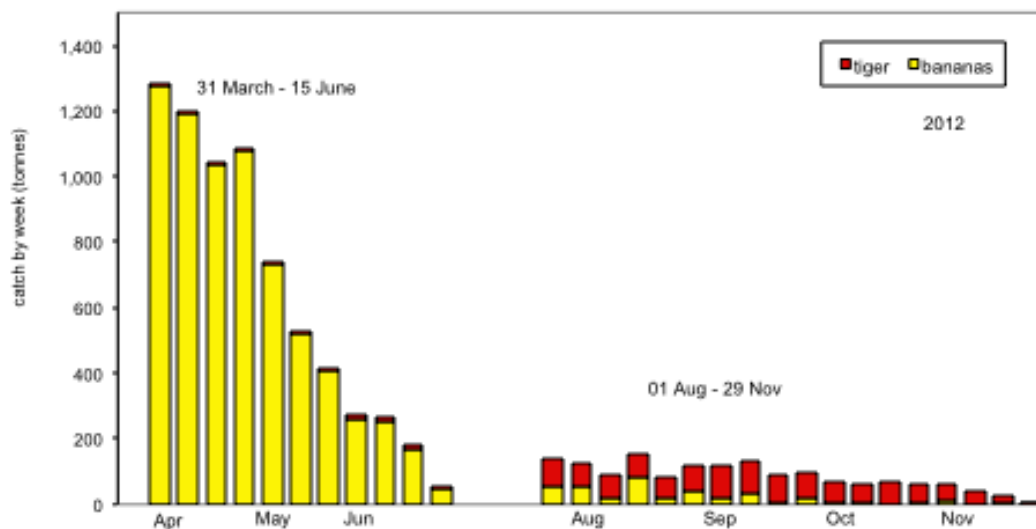


Figure 3c: Weekly catches of banana and tiger prawns (t) in the NPF in 2012.

Effort

Nominal and effective effort

Nominal effort is the number of days recorded by skippers in their logbooks. Effective effort applies only to the tiger prawn fishery and is based on the assumption that there has been an 'effort creep' (an increase in effectiveness of the gear utilised and fishing operations). A number of different approaches to effort creep are being used by the Northern Prawn Fishery Resource Assessment Group (NPRAG), including using an average 5% per year as well as variable effort creep. As in previous years, for the purpose of preparing this report we have used 5%. Nominal effort in the banana prawn fishery decreased by 914 days (26.6%) in 2012 compared to 2011. In the tiger prawn fishery, nominal effort increased by 1078 days (26%) in 2012 compared to 2011. Effective effort in the tiger prawn fishery increased by 3,223 days (32%) compared to 2011.

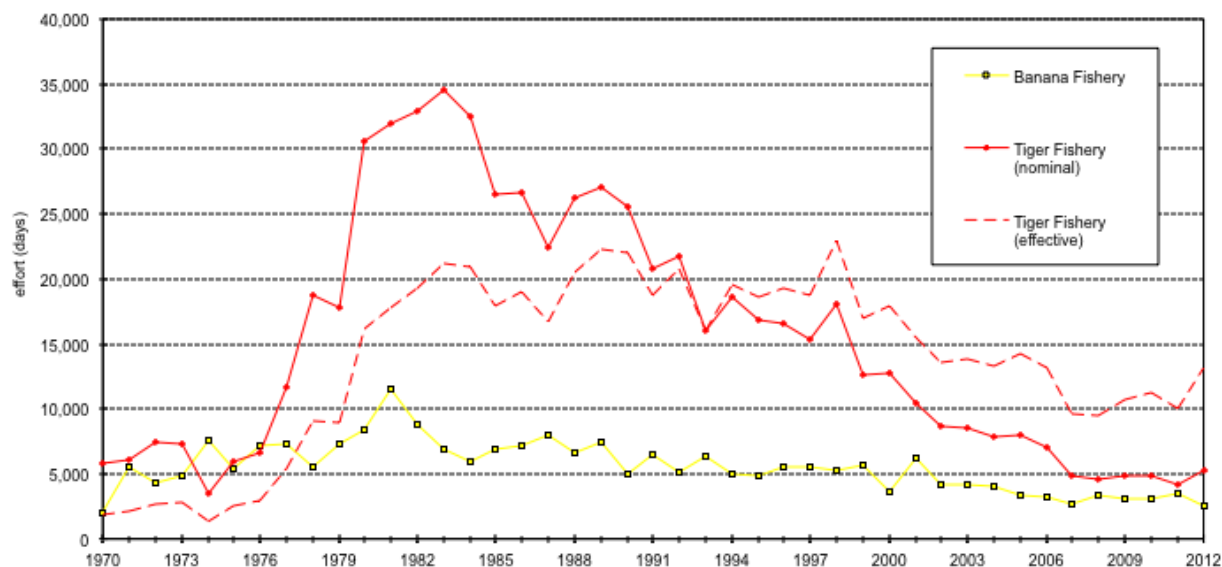


Figure 4: Effort in the banana and tiger prawn fisheries in the NPF between 1970 and 2012.

Catch Rate

It is worth noting that there have been a number of changes to headrope length implemented in the NPF over time. A reduction in headrope length of 25% came into effect at the start of the first season in 2005. More recently, an 8% increase in headrope length was implemented in the 2008 tiger prawn season. As a result “catch rate”, measured in terms of Catch per Unit Effort (CPUE), being tonnes per day may be affected. It is also important to note that trends in CPUE don't necessarily reflect trends in stock abundance.

The banana prawn fishery CPUE decreased from a daily rate of 2.232 t per day in 2011 to 1.909 t per day in 2012. The nominal CPUE for the tiger prawn fishery increased from 0.304 t per day in 2011 to 0.325 t per day in 2012, while the effective CPUE increased from 0.126 t per day in 2011 to 0.128 t per day in 2012 (Figure 5).

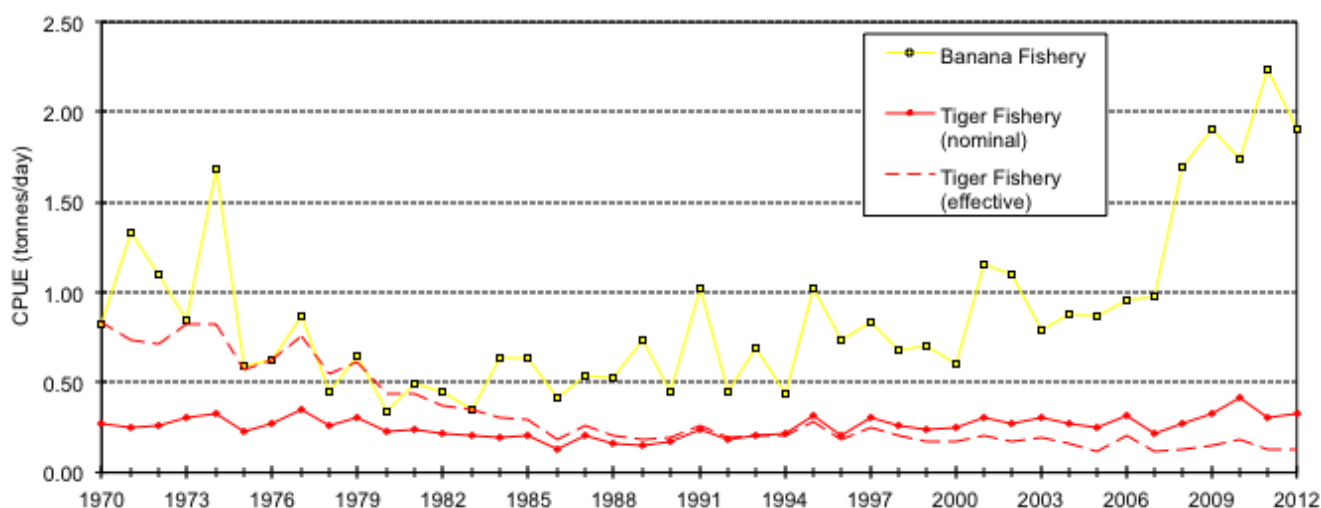


Figure 5: Catch rate in the banana and tiger prawn fisheries between 1970 and 2012.

Catch, effort and catch rate by month

The highest total prawn catches during the 2012 banana prawn season were obtained during April, whilst the highest total prawn catches during the 2012 tiger prawn season were obtained during August (Table 2).

Table 3 shows effort by month in the banana and tiger prawn seasons for 2012. Effort for 2012 in the banana prawn season was highest in April and lowest in June. Tiger prawn season effort was highest in October and lowest the following month in November as many boats began to return to port (Table 3).

Monthly CPUE for banana prawns was highest in April during the banana prawn season (Table 4). Monthly CPUE for both nominal and effective effort for tiger prawns was highest in August.

Table 2: Monthly catch by species in 2012.

Catch (t)	Apr	May	Jun	Jul	Aug	Sep	Oct	Nov	Grand Total
Banana	3,444.218	915.720	66.489		217.505	107.925	36.743	24.583	4,813.182
Tiger	4.323	25.820	22.265		318.587	384.985	297.509	153.515	1,207.004
Endeavour		3.664	1.067		148.578	74.368	173.139	92.567	493.383
King		0.274	0.158		2.090	0.410	0.051	0.049	3.032.000
Total	3,449	945	90	0	687	568	507	271	6,517.000

Table 3: Monthly effort in the banana and tiger prawn seasons in 2012.

Effort (days)	April	May	June	July	Aug	Sep	Oct	Nov	Dec	Grand Total
Banana Fishery	1,302	756	64	0	197	73	49	43	42	2,526
Tiger Fishery (nominal)	3	68	73		1,210	1,409	1,448	1,010		5,221
Tiger Fishery (effective)	8	172	184		3,058	3,560	3,659	2,552		13,193
Total	1,313	996	320	0	4,465	5,042	5,156	3,605	42	20,940

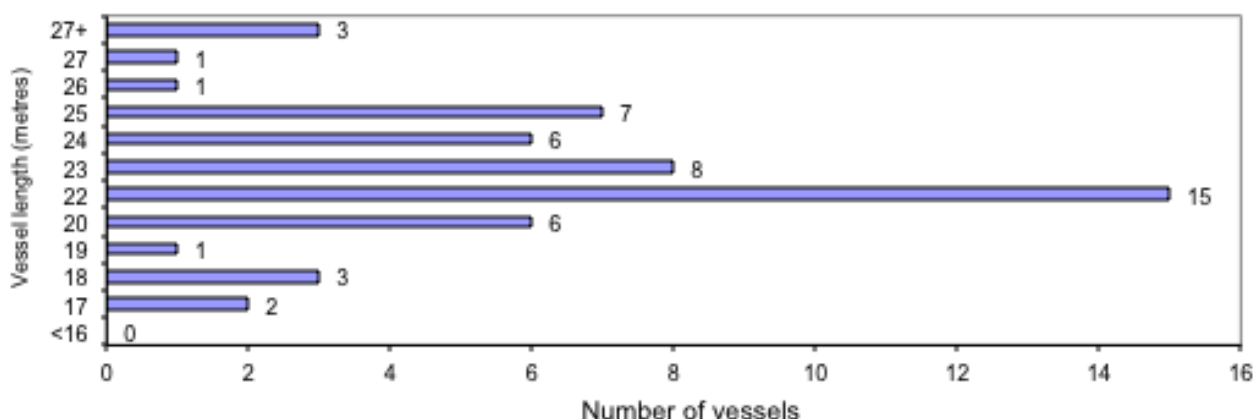
Table 4: Monthly catch rate for all species in the banana and tiger prawn seasons in 2012.

CPUE (t/day)	Apr	May	Jun	Jul	Aug	Sep	Oct	Nov	Dec
Banana Fishery	2.646	1.218	1.064	0.000	1.073	1.507	0.803	0.640	0.000
Tiger Fishery (nominal)	1.029	0.362	0.314	0.000	0.393	0.325	0.323	0.241	0.000
Tiger Fishery (effective)	0.407	0.143	0.124	0.000	0.155	0.129	0.128	0.095	0.000

Vessel and gear information

Vessel length

A total of 53 different vessels fished in the NPF during 2012. The total number of vessels fishing at any one time was limited to 52, however leasing of SFRs during the year resulted in a total of 53 vessels operating within the fishery in total during the year. As in 2011, the most common NPF vessel length in 2012 was between 22.0-22.9 m (Figure 6).

**Figure 6:** Frequency of vessel lengths in the NPF fleet in 2012.

Distribution of catch by vessel

The majority of NPF vessels caught well in 2012. Of the 53 vessels which fished during the 2012 banana prawn season, 39 of them (76%) caught >60 t (Figure 7a). Four vessels (8%) caught 50-59 t, 40-49 t and 30-39 t (Figure 7a).

Distribution of catch was more evenly spread during the 2012 tiger prawn season. Of the 52 vessels which fished during the 2012 tiger prawn season, 3 of them (6%) caught <20 t and 20-29 t, 4 (8%) caught 30-39 t, 27 vessels (52%) caught 40-49 t, 12 vessels (23%) caught 50-59 t, and 3 (6%) caught >=60 t (Figure 7b).

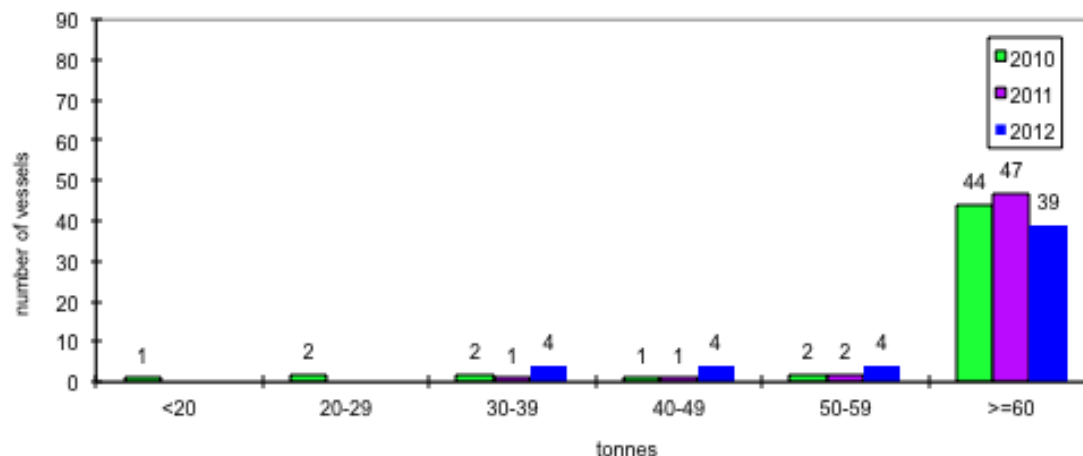


Figure 7a: Distribution of total catch in the banana prawn season, 2010-2012.

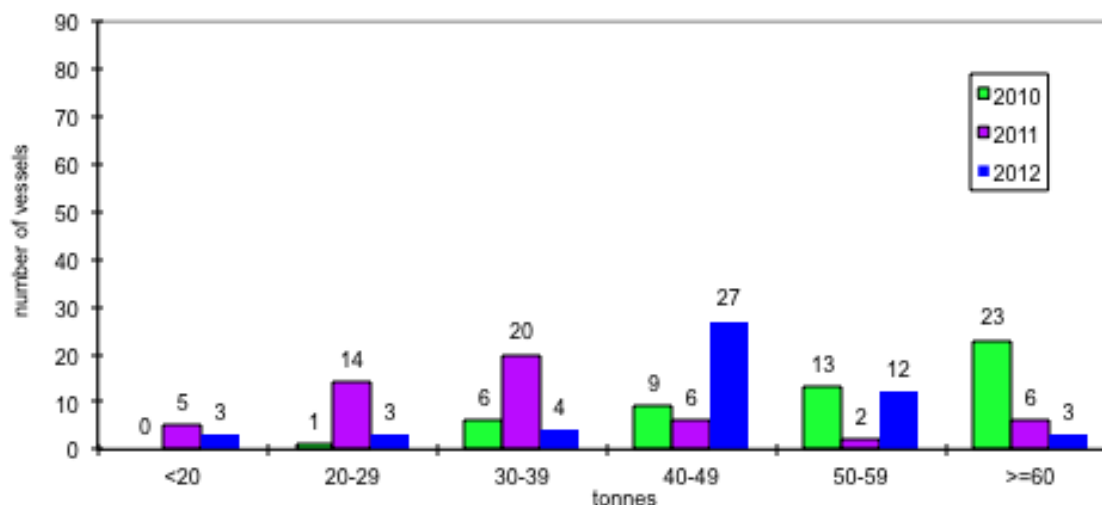


Figure 7b: Distribution of total catch in the tiger prawn season, 2010-2012.

Average catch per vessel

Average total prawn catch per vessel decreased in 2012 from 166 t in 2011 to 124 t per vessel in 2012 (Figure 8a). The average catch per vessel for banana prawns in 2012 decreased from 141 t in 2011 to 92 t in 2012 (Figure 8b). Conversely, average catch of tiger prawns per vessel increased from 15 t in 2011 to 23 t per vessel in 2012 (Figure 8c).

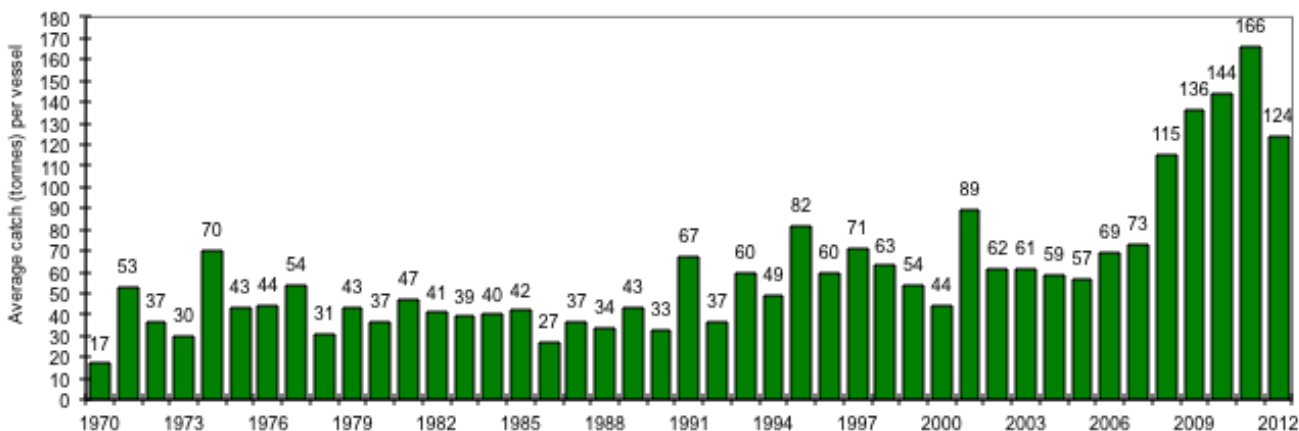


Figure 8a: Average total catch of all prawns per vessel in the NPF from 1970 to 2012.

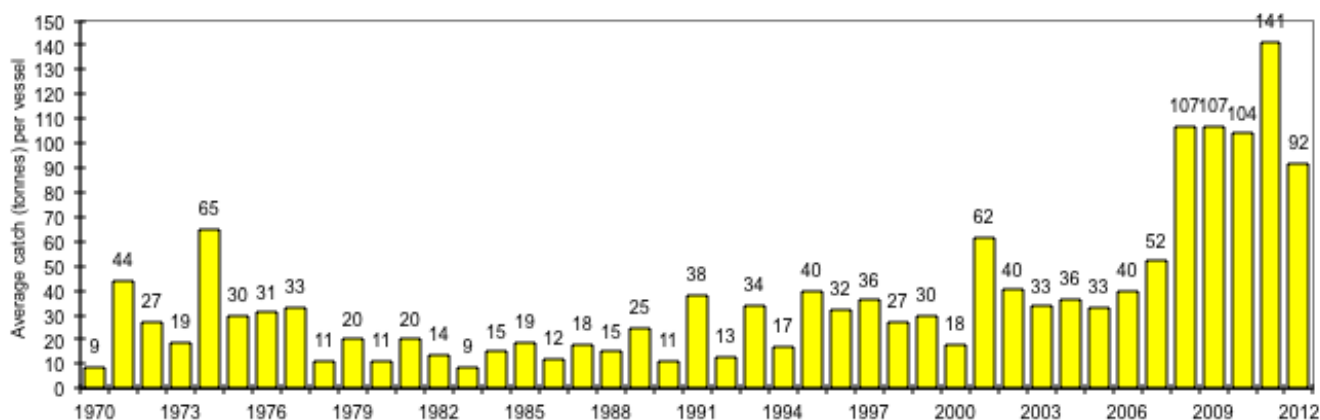


Figure 8b: Average total catch of banana prawns per vessel in the NPF from 1970 to 2012.

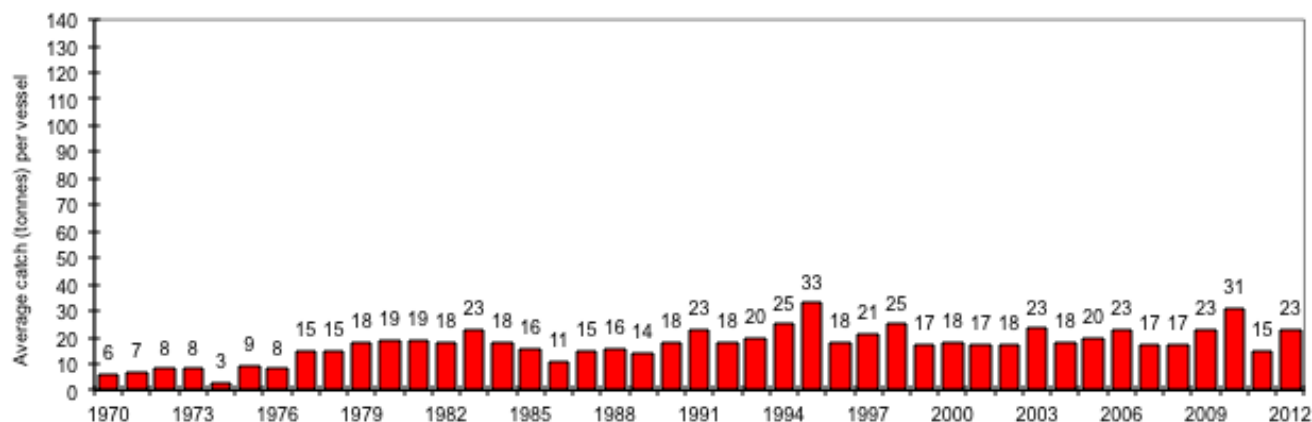


Figure 8c: Average total catch of tiger prawns per vessel in the NPF from 1970 to 2012.

Fishing Gear

Total tiger prawn headrope in 2012 stayed similar at 1,490 fathoms (2.725 km) in 2012 compared to 1,476 fathoms (2.699 km) in 2011 (Figure 9). The mean headrope length in 2012 was 28.12 fathoms (51.4 m) compared with 27.84 fathoms (50.93 m) in 2011 (Figure 10).

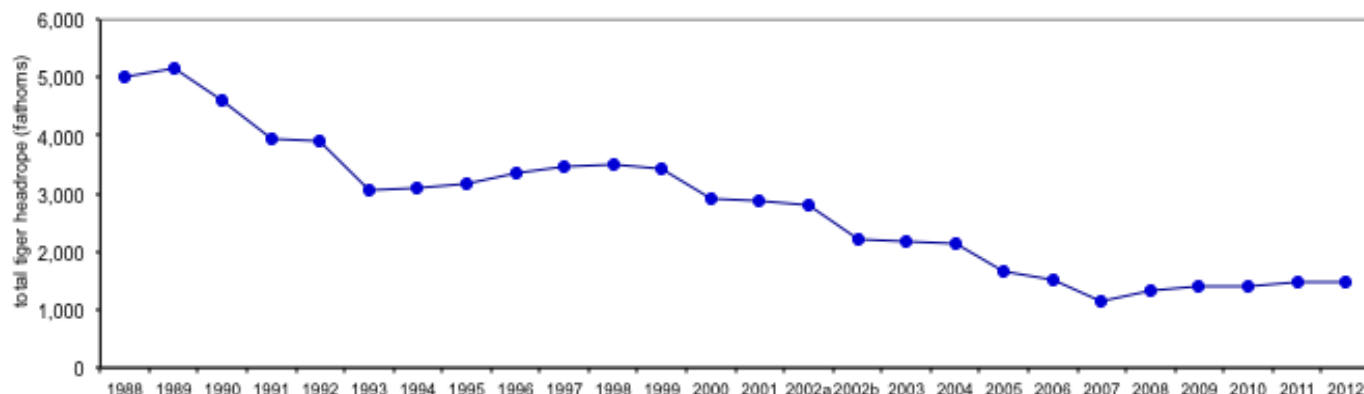


Figure 9: Total tiger prawn season headrope length in the NPF from 1988 to 2012.

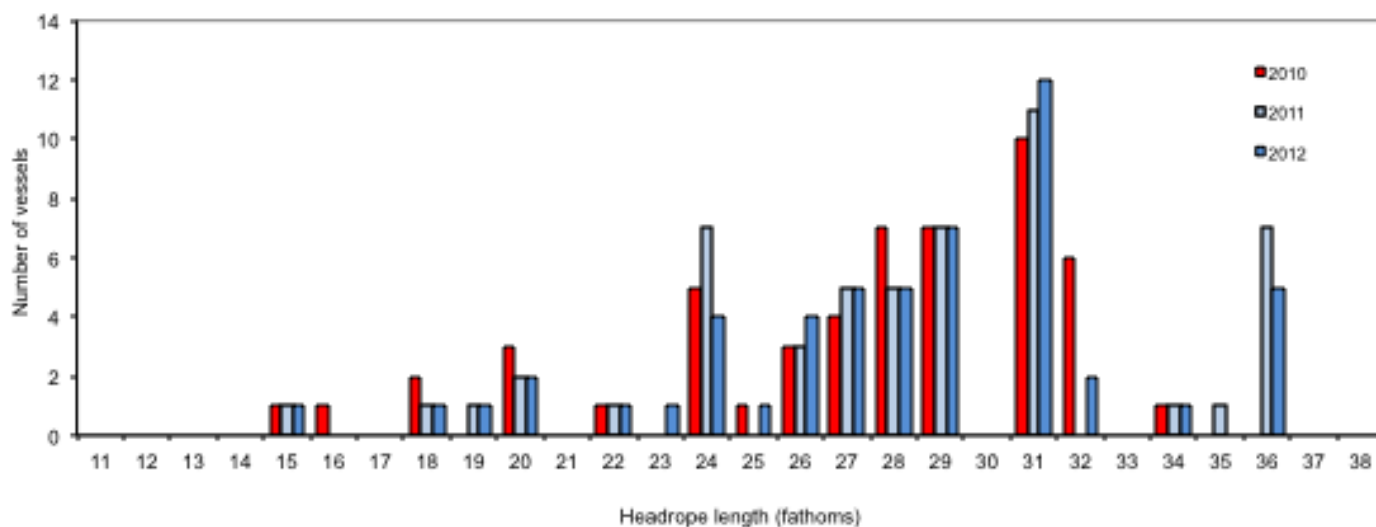


Figure 10: Frequency of headrope length for the tiger prawn season in the NPF from 2010 to 2012.

Catch and effort by statistical area in the Northern Prawn Fishery

All areas

Catch and effort has been partitioned into the 15 statistical areas illustrated below (Figure 11) and is detailed on the following pages. The highest banana prawn catches were recorded in the Bold area with 912 t (Figure 12). The highest catches of tiger prawns were recorded in the Groote area with 287 t (Figure 13).

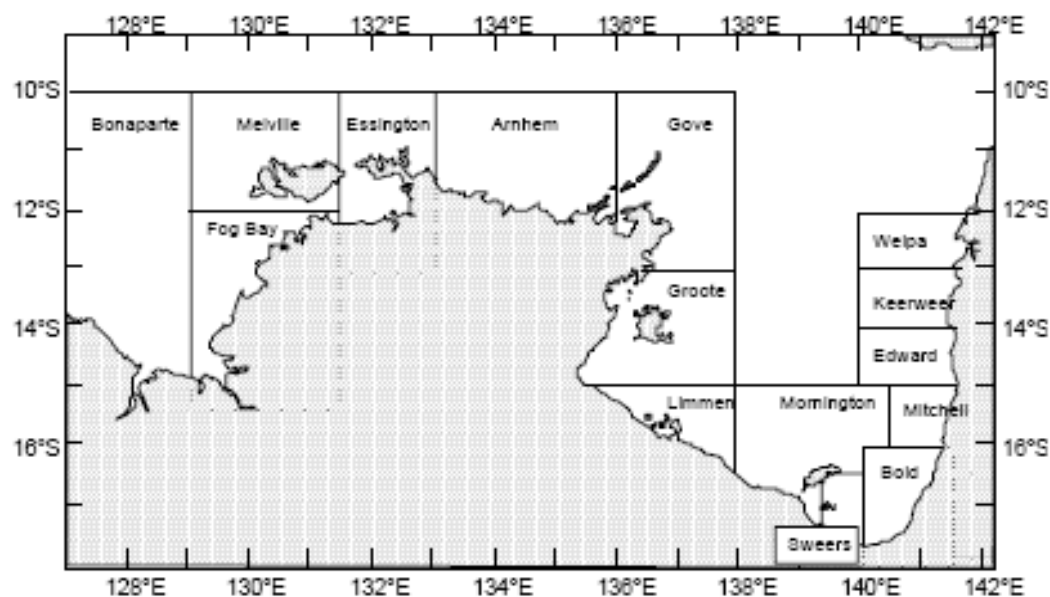


Figure 11: Statistical areas of the NPF.

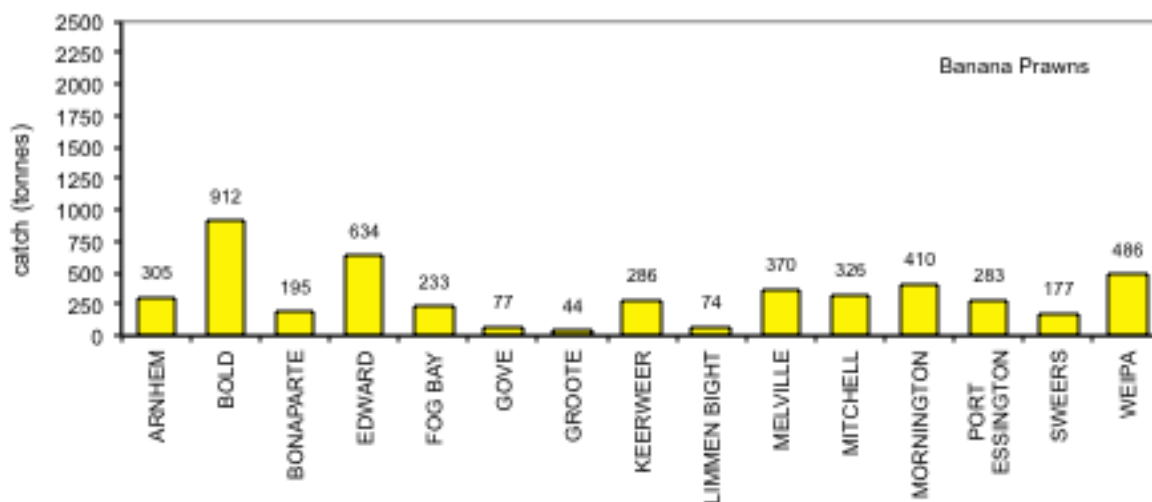


Figure 12: Total catch of banana prawns for each statistical area of the NPF in 2012.

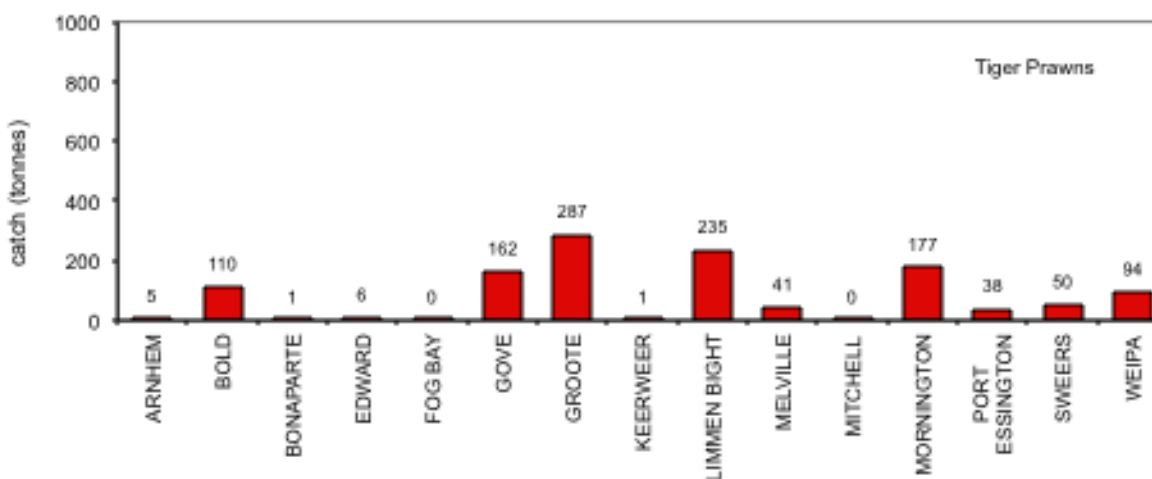


Figure 13: Total catch of tiger prawns for each statistical area of the NPF in 2012.

Weipa

Banana prawn catches in Weipa decreased from 730 t in 2011 to 486 t in 2012. Tiger prawn catches decreased from 114 t in 2011 to 94 t in 2012 and catches of endeavour prawns increased from 82 t in 2011 to 166 t in 2012 (Figure 14). Banana prawns dominated the catches in Weipa during 2012, comprising 65%, with tiger and endeavor prawns making up 13 and 22%, respectively (Figure 15).

Effort in the banana prawn fishery decreased from 262 days in 2011 to 200 days in 2012 (Figure 16a). CPUE of banana prawns decreased from 2.78 t per day in 2011 to 2.43 t per day in 2012 (Figure 16b). Effort in the tiger prawn fishery increased from 642 days in 2011 to 708 day in 2012 (Figure 16a). Nominal and effective CPUE of tiger prawns increased from 0.306 t and 0.127 t per day in 2011 respectively, to 0.369 t and 0.146 t per day in 2012 (Figure 16c).

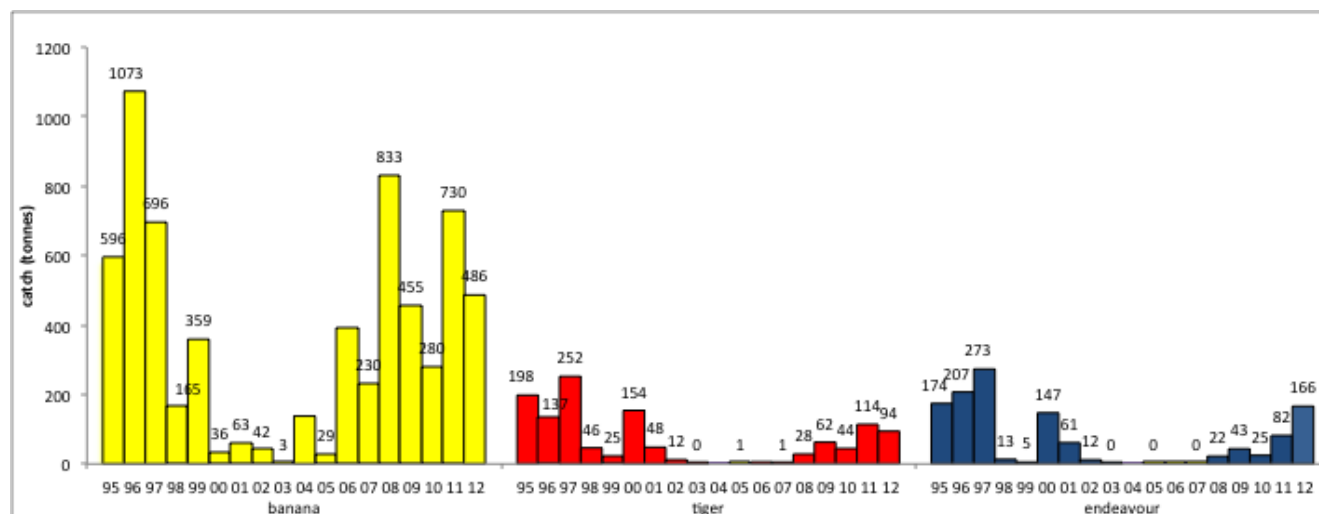
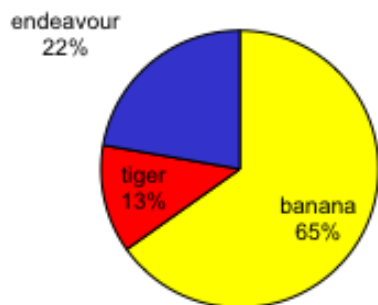


Figure 14: Catch by species in the Weipa area between 1995 and 2012.

a)



b)

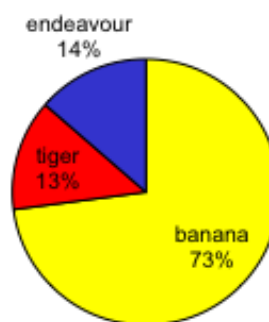


Figure 15: (a) Percentage catch of prawn species in the Weipa area during 2012, and (b) percentage catch of prawn species in the Weipa area from 1995 to 2012.

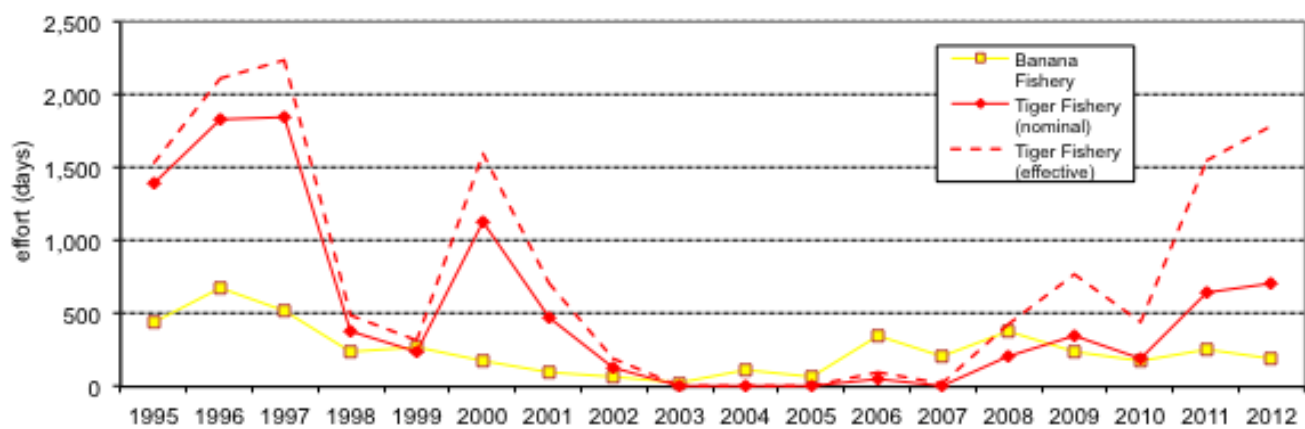


Figure 16a: Effort for the banana and tiger prawn fisheries in the Weipa area between 1995 and 2012.

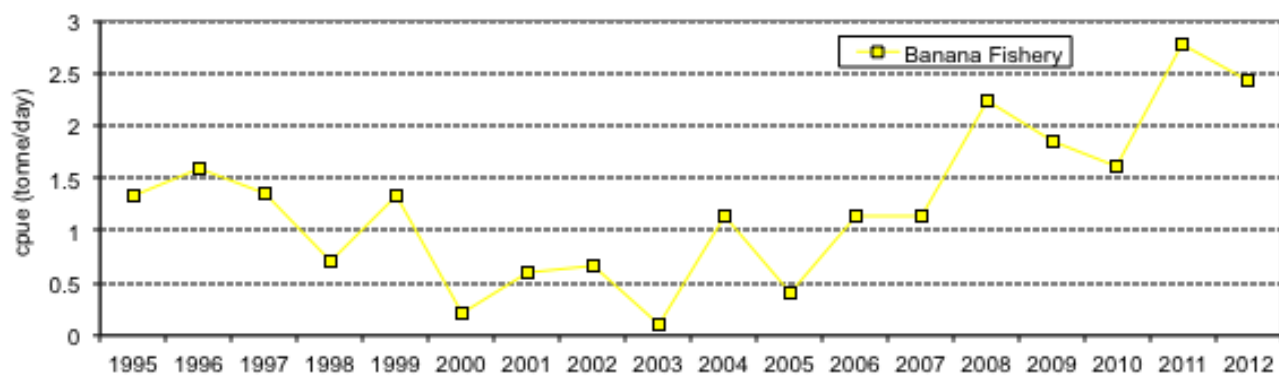


Figure 16b: Catch rate for the banana prawn fishery in the Weipa area between 1995 and 2012.

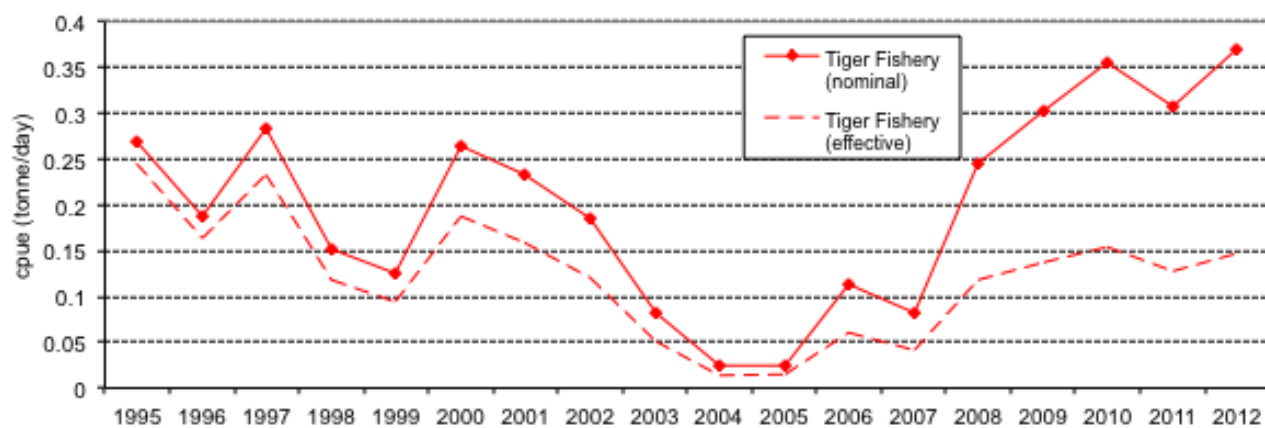


Figure 16c: Nominal and effective catch rate for the tiger prawn fishery in the Weipa area between 1995 and 2012.

Keerweer

Banana prawn catches in the Keerweer region increased from 230 t in 2011 to 286 t in 2012. Catches of tiger and endeavor prawns were both <1 t in 2012, as in 2011 (Figure 17). Banana prawns comprised 100% of the catch in 2012 (Figure 18a).

Effort in the banana prawn fishery increased from 82 days in 2011 to 135 days in 2012 (Figure 19a). CPUE for banana prawns decreased from 2.81 t per day in 2011 to 2.12 t per day in 2012 (Figure 19b). Nominal and effective CPUE of tiger prawns decreased from 0.174 t and 0.072 t per day in 2011 to 0.102 and 0.040 in 2012, respectively (Figure 19c).

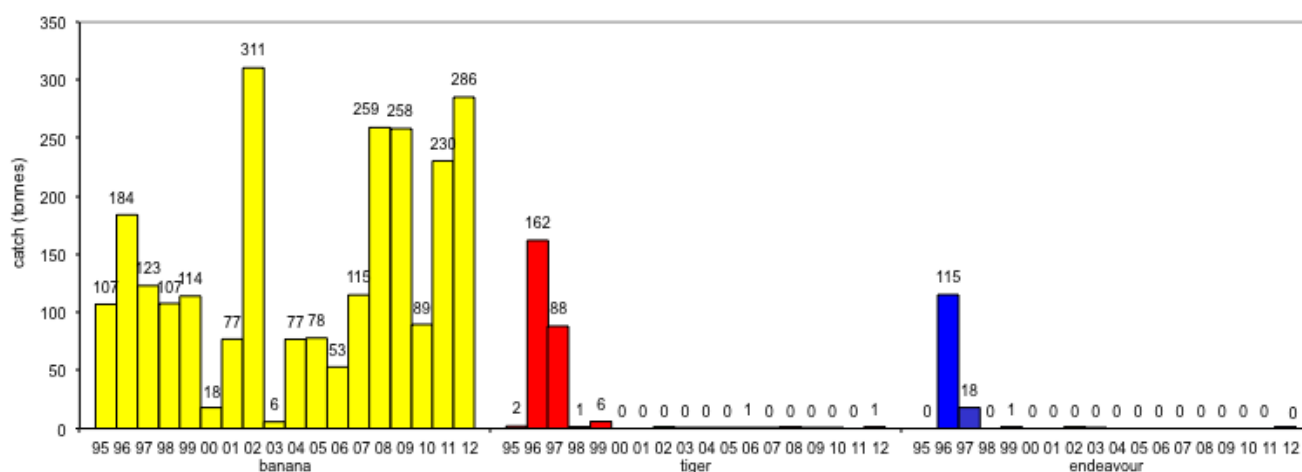
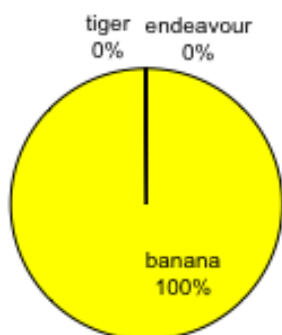


Figure 17: Catch by species in the Keerweer area between 1995 and 2012.

a)



b)

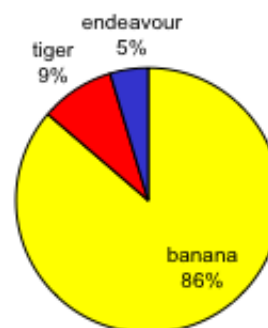


Figure 18: (a) Percentage catch of prawn species in the Keerweer area during 2012 and (b) percentage catch of prawn species in the Keerweer area from 1995 to 2012.

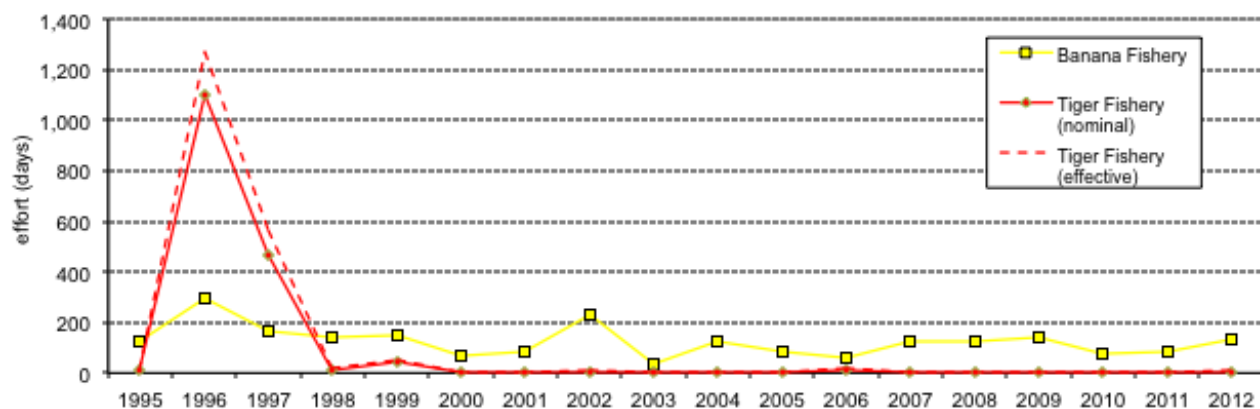


Figure 19a: Effort for the banana and tiger prawn fisheries in the Keerweer area between 1995 and 2012.

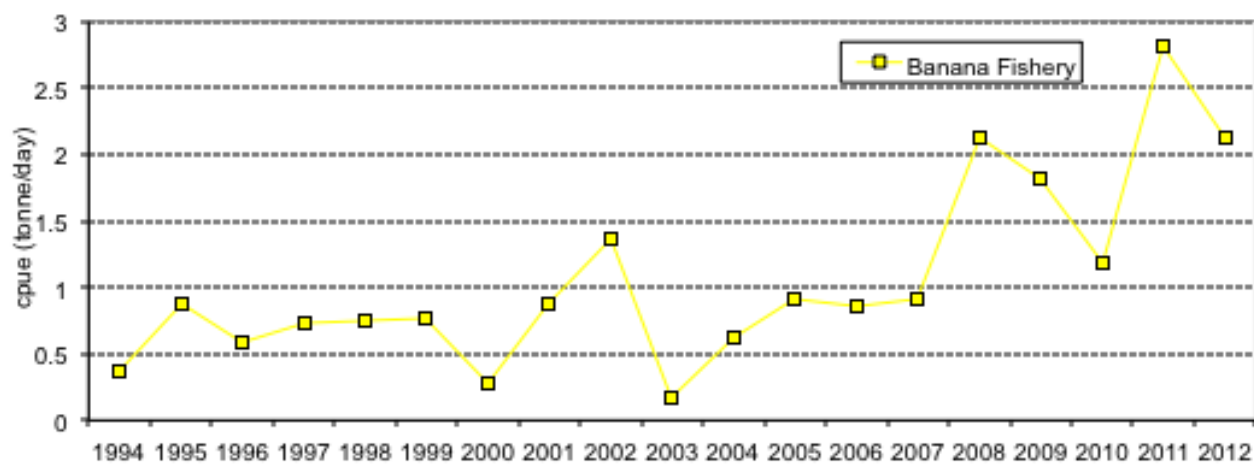


Figure 19b: Catch rate for the banana prawn fishery in the Keerweer area between 1994 and 2012.

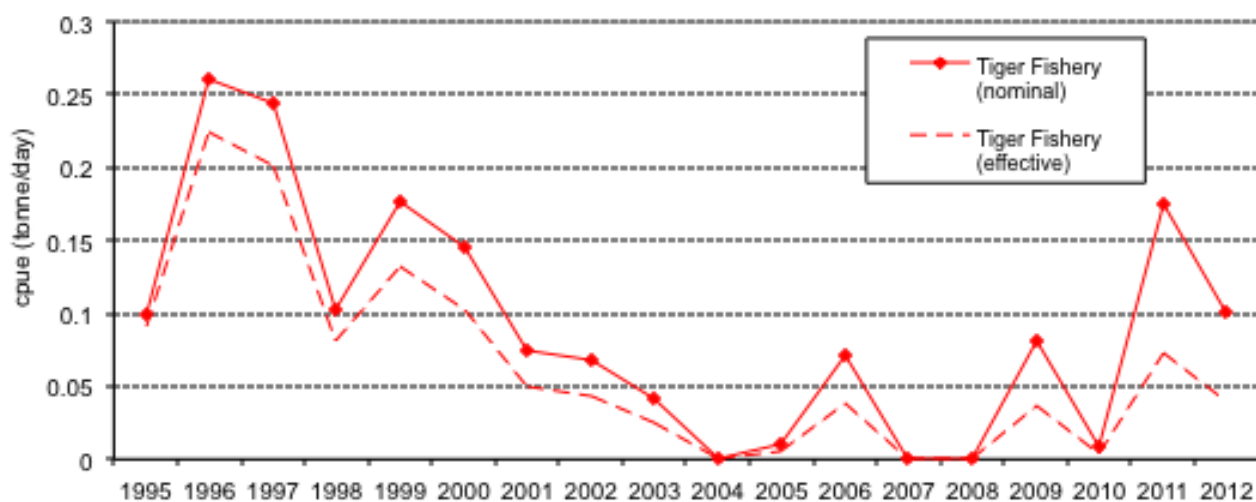


Figure 19c: Nominal and effective catch rate for the tiger prawn fishery in the Keerweer area between 1995 and 2012.

Edward

Banana prawn catches in the Edward area increased from 521 t in 2011 to 634 t in 2012. Tiger prawns were 6 t, and endeavour prawn catches were less than 1 t (Figure 20). Banana prawns comprised 99% of the catch in 2012 (Figure 21).

Effort in the banana prawn fishery increased from 178 days in 2011 to 297 days in 2012 (Figure 22a). CPUE of banana prawn decreased from 2.935 t per day in 2011 to 2.134 t per day in 2012 (Figure 22b). Nominal and effective CPUE of tiger prawns increased from 0.105 t and 0.043 t per day in 2011 to 0.374 t and 0.148 t in 2012 (Figure 22a, c).

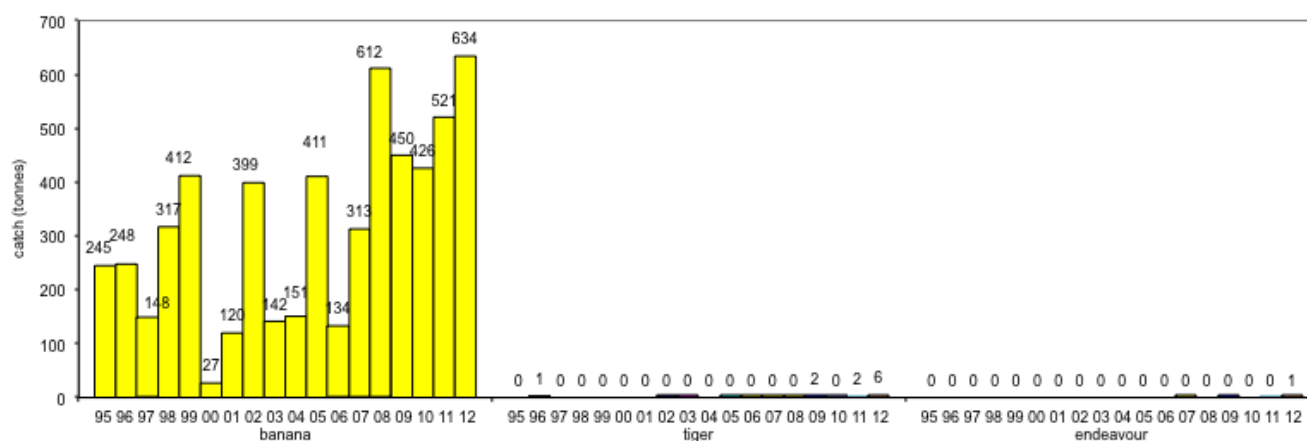


Figure 20: Catch by species in the Edward area between 1995 and 2012.

a)



b)



Figure 21: (a) Percentage catch of prawn species in the Edward area during 2012 and (b) percentage catch of prawn species in the Edward area from 1995 to 2012.

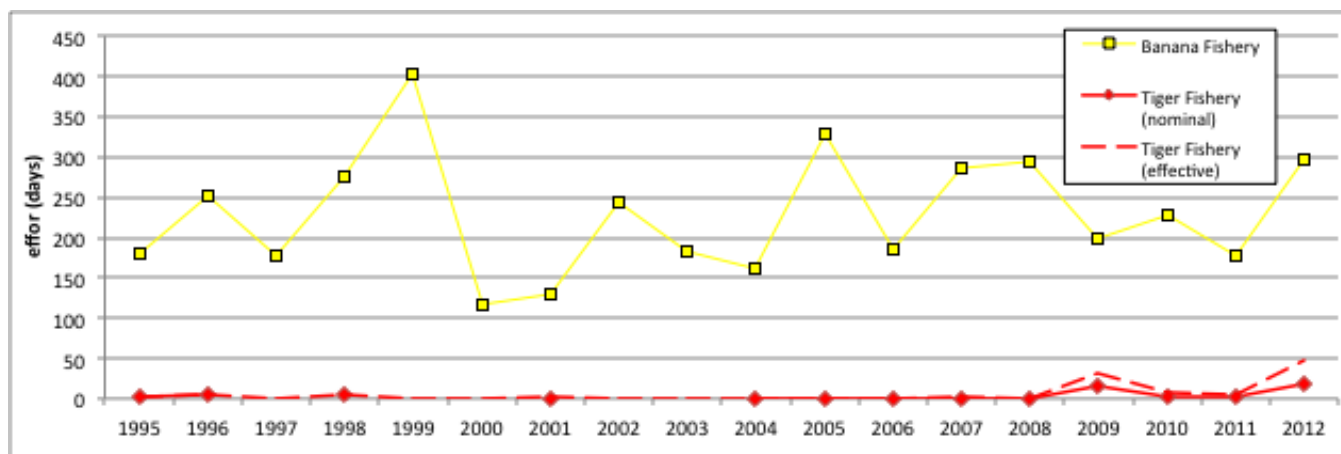


Figure 22a: Effort for the banana and tiger prawn fisheries in the Edward area between 1995 and 2012.

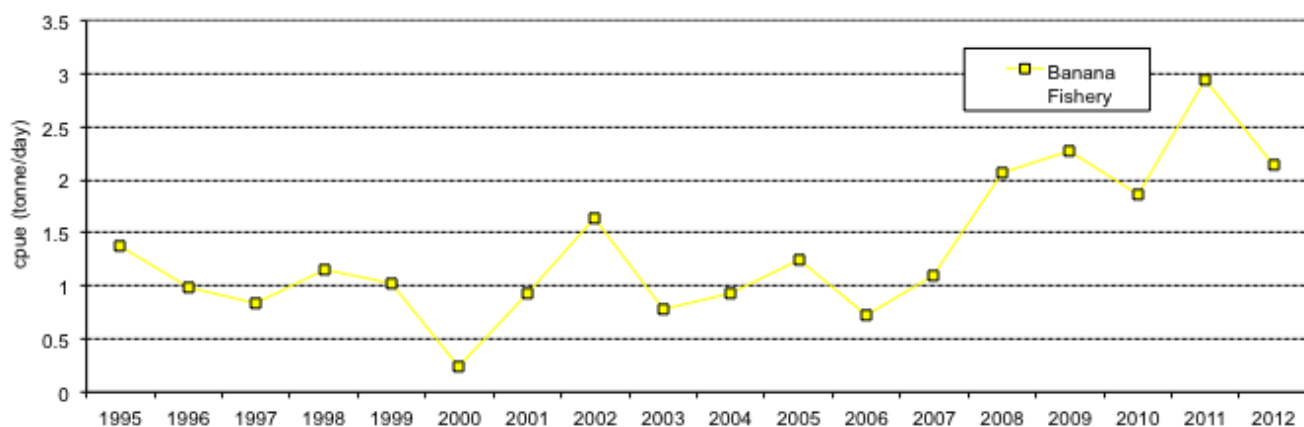


Figure 22b: Catch rate for the banana prawn fishery in the Edward area between 1995 and 2012.

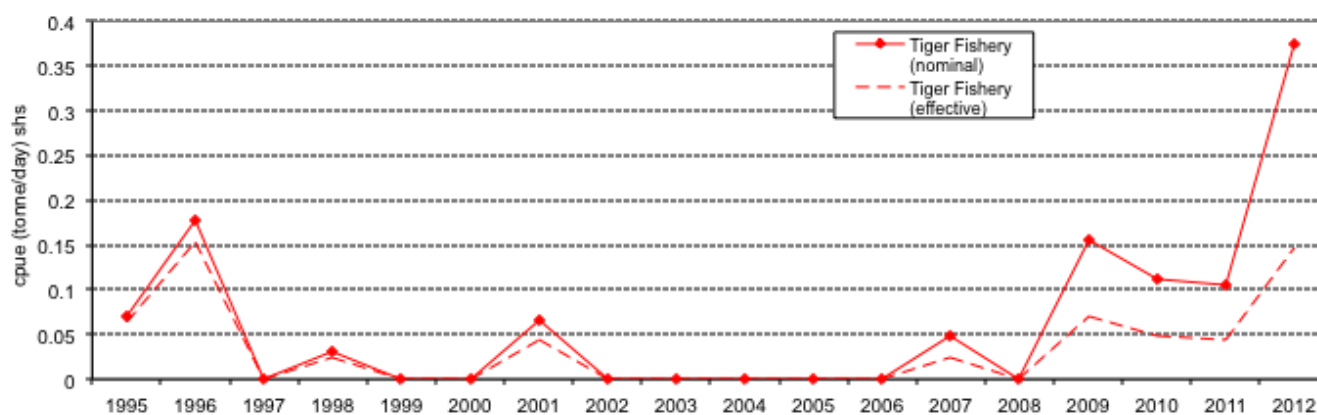


Figure 22c: Nominal and effective catch rate for the tiger prawn fishery in the Edward area between 1995 and 2012.

Mitchell

Banana prawn catches in the Mitchell area increased from 288 t in 2011 to 326 t in 2012. Tiger and endeavour prawn catches were both 0 t, as in 2011 (Figure 23). Banana prawns comprised 100% of the catch in this area during 2012 (Figure 24).

Effort in the banana prawn fishery increased from 107 days in 2011 to 169 days in 2012 (Figure 25a). CPUE of banana prawns decreased from 2.695 t per day in 2011 to 1.931 t per day in 2012 (Figure 25b). Nominal and effective CPUE of tiger prawns increased from 0 t for both in 2011 to 0.243 t and 0.096 t in 2012, respectively (Figure 25a, c).

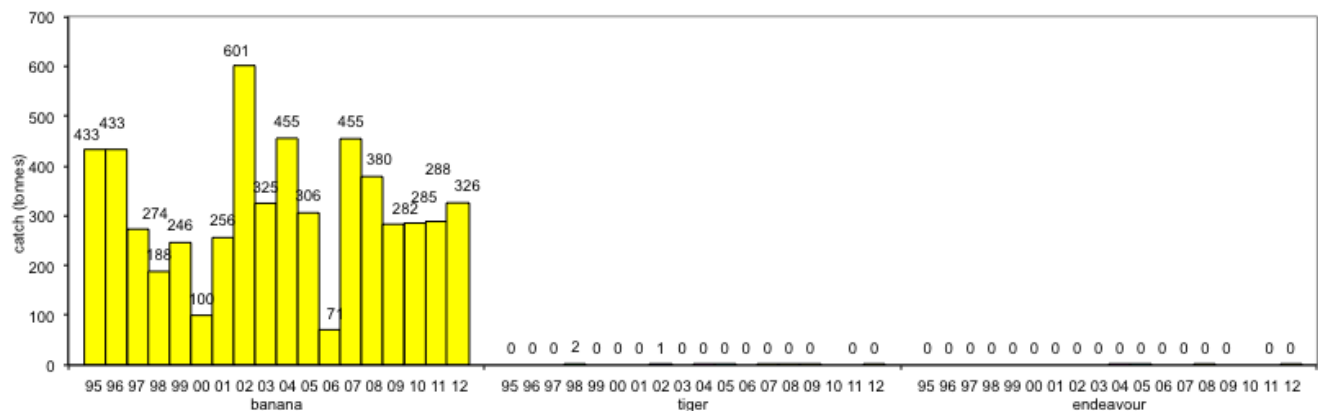


Figure 23: Catch by species in the Mitchell area between 1995 and 2012.

a)



b)

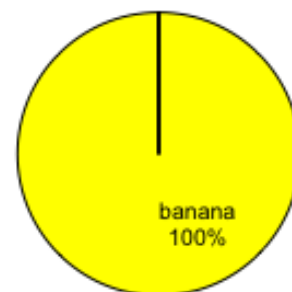


Figure 24: (a) Percentage catch of prawn species in the Mitchell area during 2012 and (b) percentage catch of prawn species in the Mitchell area from 1995 to 2012.



Figure 25a: Effort for the banana and tiger prawn fisheries in the Mitchell area between 1995 and 2012.

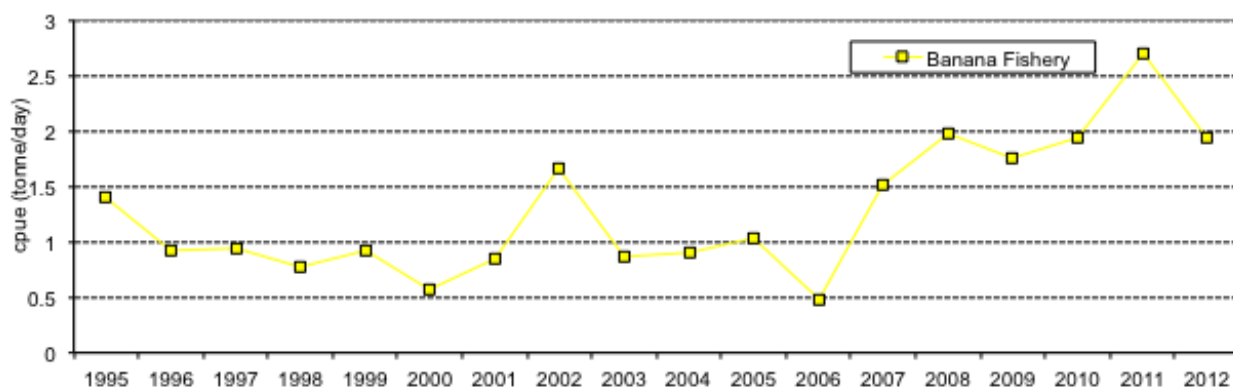


Figure 25b: Catch rate for the banana prawn fishery in the Mitchell area between 1995 and 2012.

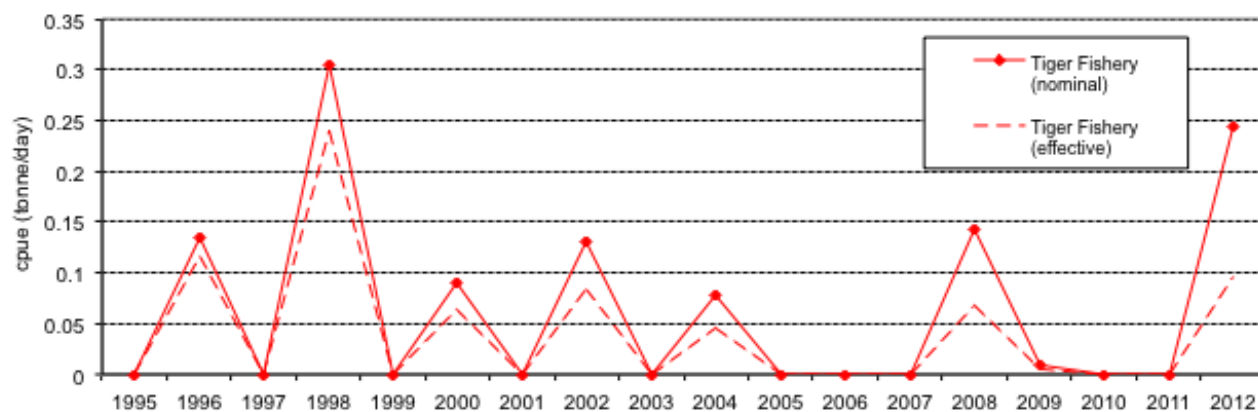


Figure 25c: Nominal and effective catch rate for the tiger prawn fishery in the Mitchell area between 1995 and 2012.

Bold

Banana prawn catches in the Bold area decreased from 2,451 t in 2011 to 912 t in 2012. Catches of tiger prawns increased from 46 t in 2011 to 110 t in 2012. Endeavour prawns catches increased slightly from 20 t in 2011 to 45 t in 2012 (Figure 26). Banana prawns dominated the catch in this area in 2012, comprising 86% of the catch (Figure 27a).

Effort in the banana prawn fishery decreased from 611 days in 2011 to 368 in 2012 (Figure 28a). CPUE of banana prawns decreased from 4.01 t per day in 2011 to 2.46 t per day in 2012 (Figure 28b). Effort in the tiger prawn fishery increased from 173 days in 2011 to 347 in 2012 (Figure 28a). Nominal and effective CPUE of tiger prawns increased from 0.381 and 0.176 t per day in 2011, to 0.466 and 0.185 t per day in 2012 (Figure 28c).

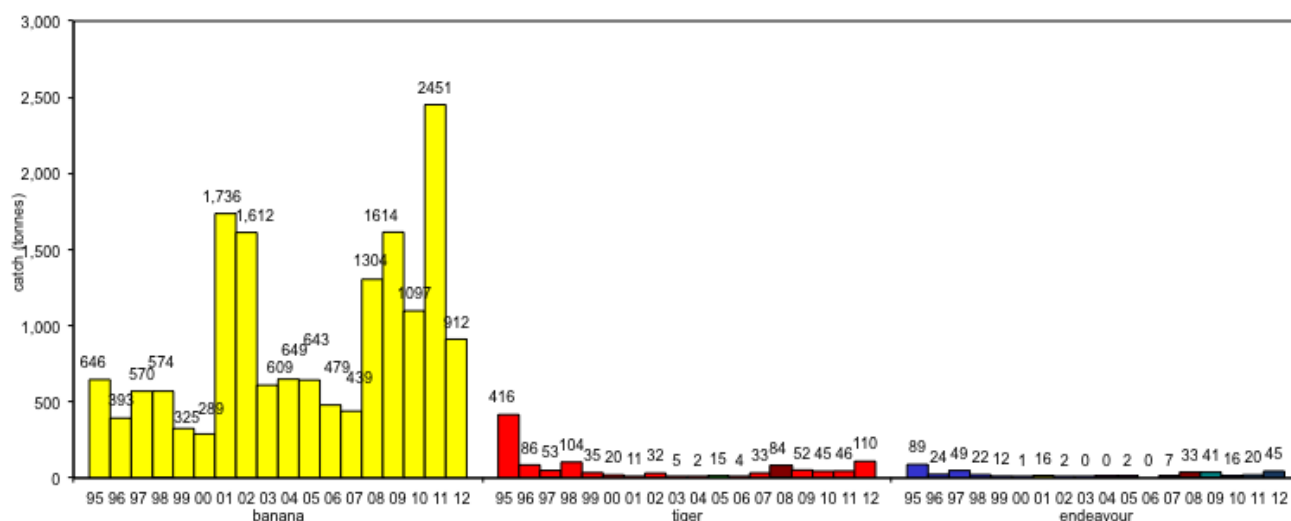
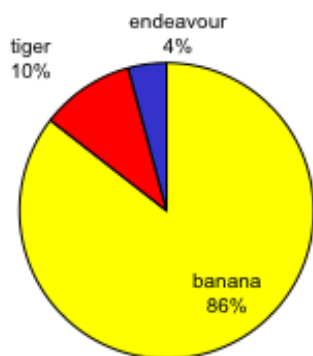


Figure 26: Catch by species in the Bold area between 1995 and 2012.

a)



b)

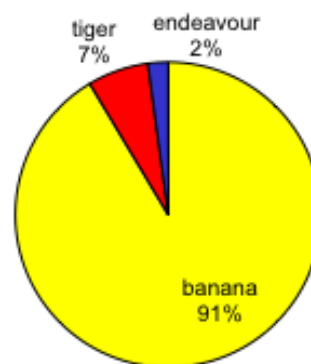


Figure 27: (a) Percentage catch of prawn species in the Bold area during 2012 and (b) catch of prawn species in the Bold area from 1995 to 2012.



Figure 28a: Effort for the banana and tiger prawn fisheries in the Bold area between 1995 and 2012.

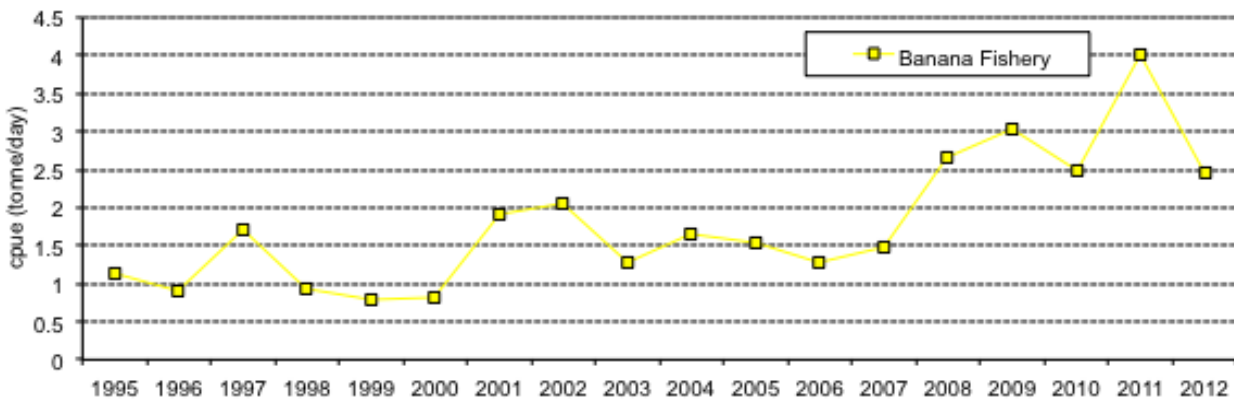


Figure 28b: Catch rate for the banana prawn fishery in the Bold area between 1995 and 2012.

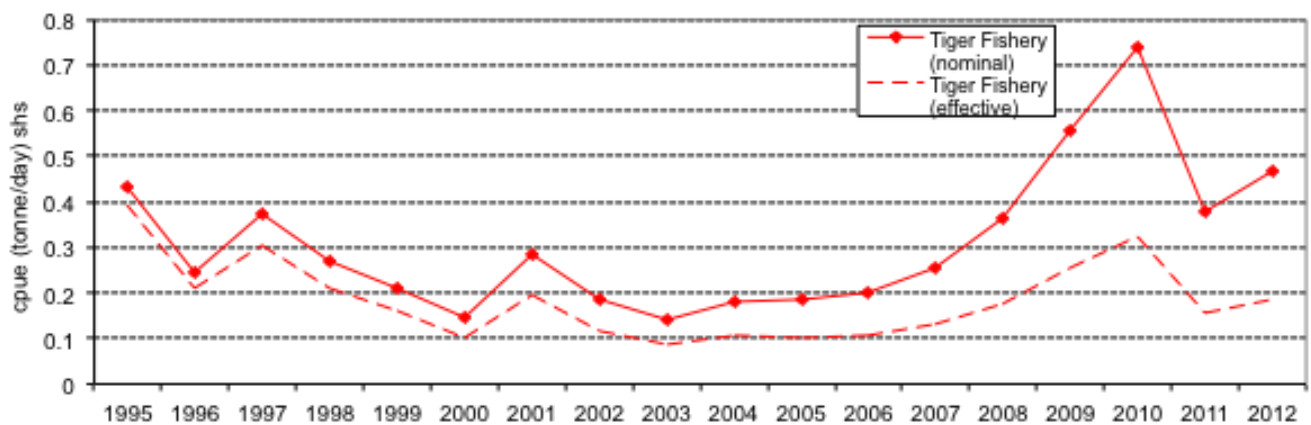


Figure 28c: Nominal and effective catch rate for the tiger prawn fishery in the Bold area between 1995 and 2012.

Sweers

Banana prawn catches in the Sweers area decreased from 379 t in 2011 to 177 t in 2012. Catches of tiger prawns decreased from 90 t in 2011 to 50 t in 2012, and endeavour prawns increased from 46 t in 2011 to 49 t in 2012 (Figure 29). Banana prawns comprised 64% of the catch for 2012, with tiger and endeavor prawns both comprising 18% (Figure 30).

Effort in the banana fishery decreased from 143 days in 2011 to 65 days in 2012 (Figure 31a). CPUE of banana prawn increased from 2.652 t per day in 2011 to 2.673 t per day in 2012 (Figure 31b). Effort in the tiger prawn fishery decreased from 281 days in 2011 to 238 days in 2012 (Figure 31a). Nominal and effective CPUE of tiger prawns for 2012 decreased slightly from 0.485 and 0.201 t per day in 2011 to 0.468 and 0.185 t per day in 2012 (Figure 31c).

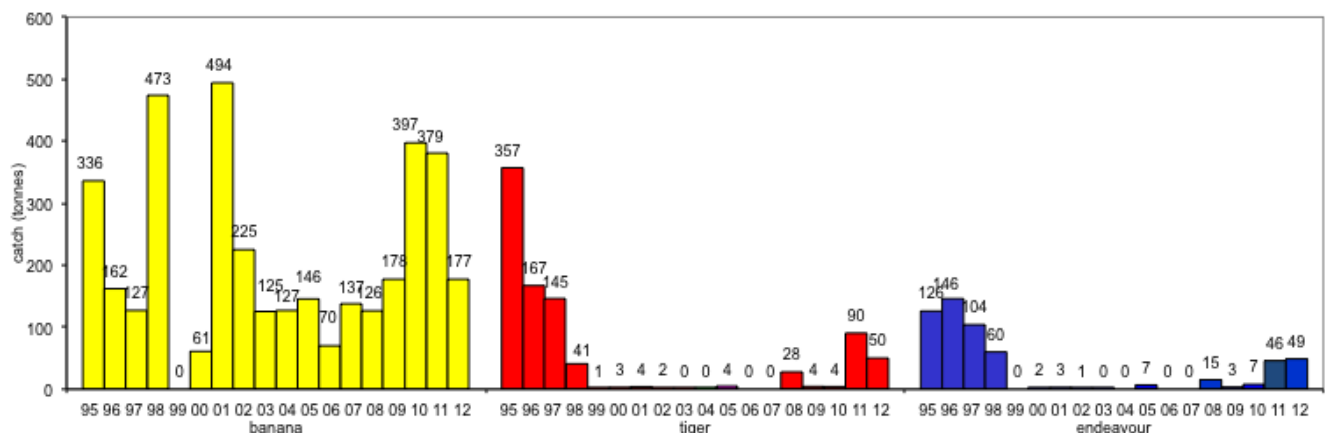
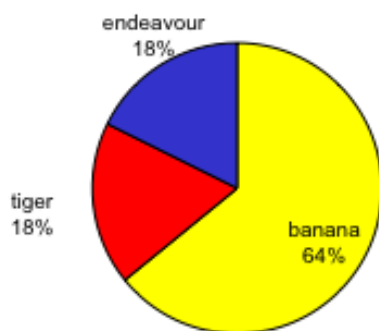


Figure 29: Catch by species in the Sweers area between 1995 and 2012.

a)



b)

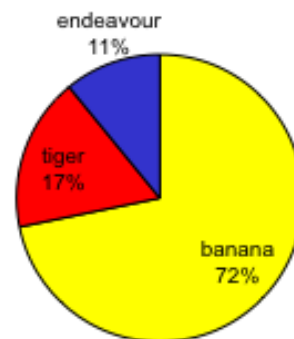


Figure 30: (a) Percentage catch of prawn species in the Sweers area during 2012, and (b) percentage catch of prawn species in the Sweers area from 1995 to 2012 .

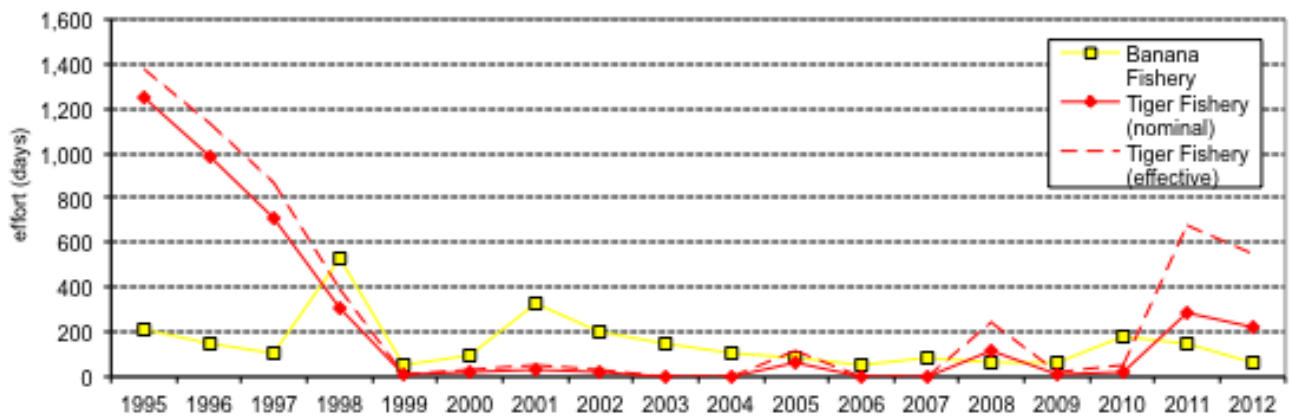


Figure 31a: Effort for the banana and tiger prawn fisheries in the Sweers area between 1995 and 2012.

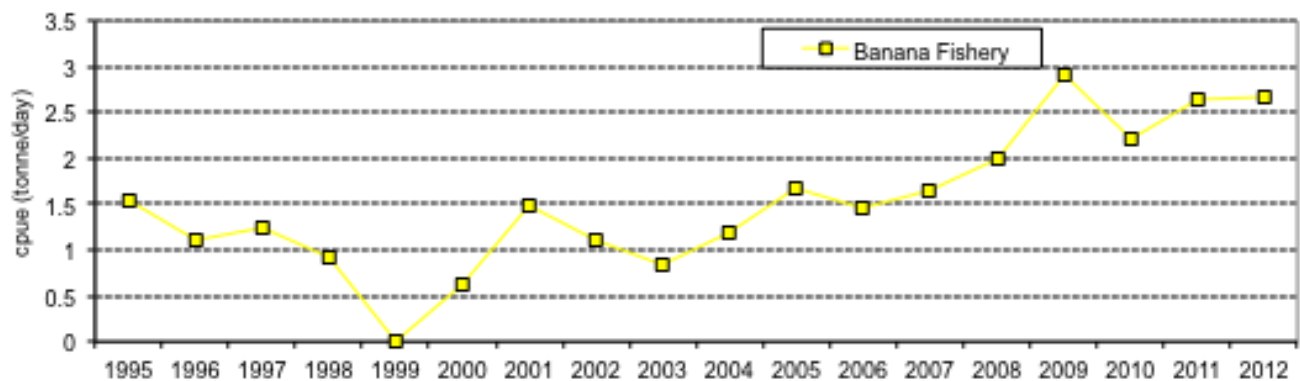


Figure 31b: Catch rate for the banana prawn fishery in the Sweers area between 1995 and 2012.

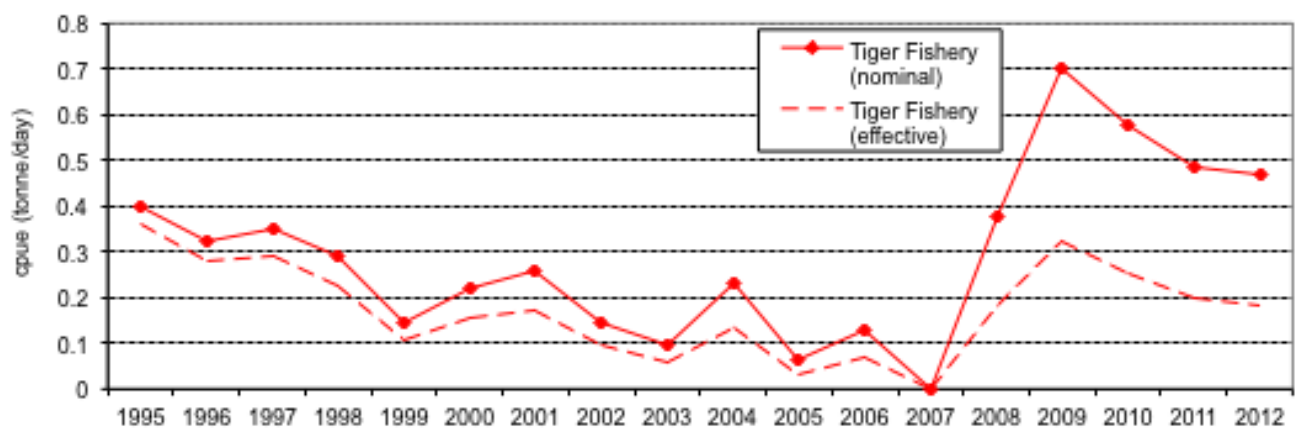


Figure 31c: Nominal and effective catch rate for the tiger prawn fishery in the Sweers area between 1995 and 2012.

Mornington

Banana prawn catches in the Mornington area decreased from 806 t in 2011 to 21 t in 2012. Catches of tiger prawns remained at 70 t in 2012. Endeavour prawn catches reduced from 29 t in 2011 to 4 t in 2012 (Figure 32). Tiger prawns dominated the catch in this area, contributing 74% of the catch in 2012, with banana and endeavor prawns contributing 22% and 4% to the total catch, respectively (Figure 33).

Effort in the banana fishery decreased from 273 days in 2011 to 7 days in 2012 (Figure 34a). CPUE of banana prawns decreased slightly from 2.952 t per day in 2011 to 2.945 t per day in 2012 (Figure 34b). Effort in the tiger prawn fishery decreased from 347 days in 2011 to 227 in 2012 (Figure 34a). Nominal and effective CPUE of tiger prawns increased from 0.285 and 0.119 t to 0.326 and 0.129 t per day in 2012, respectively (Figure 34c).

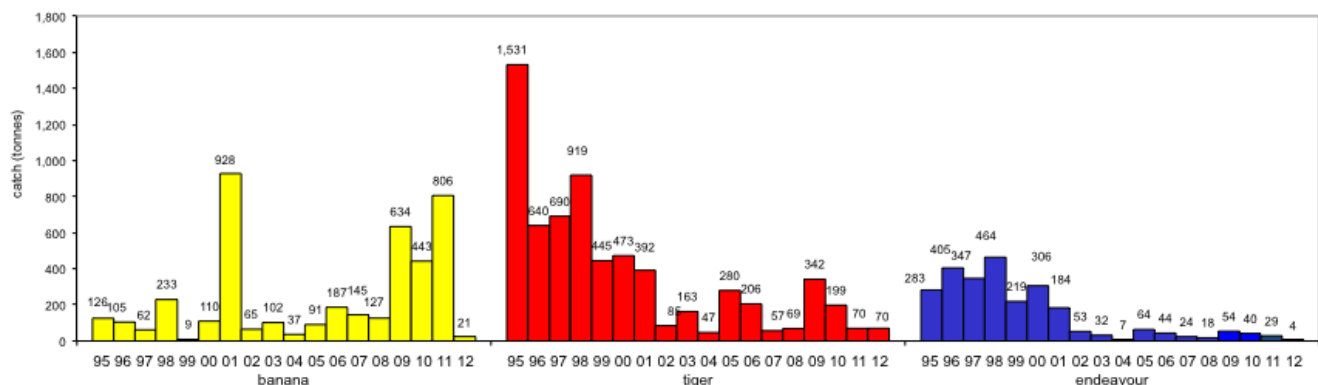


Figure 32: Catch by species in the Mornington area between 1995 and 2012.

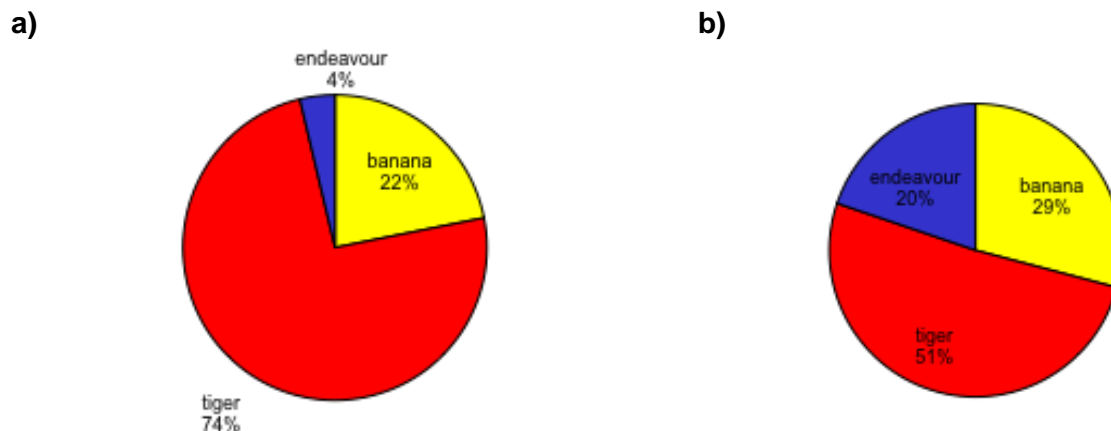


Figure 33: (a) Percentage catch of prawn species in the Mornington area during 2012 and (b) percentage catch of prawn species in the Mornington area from 1995 to 2012.

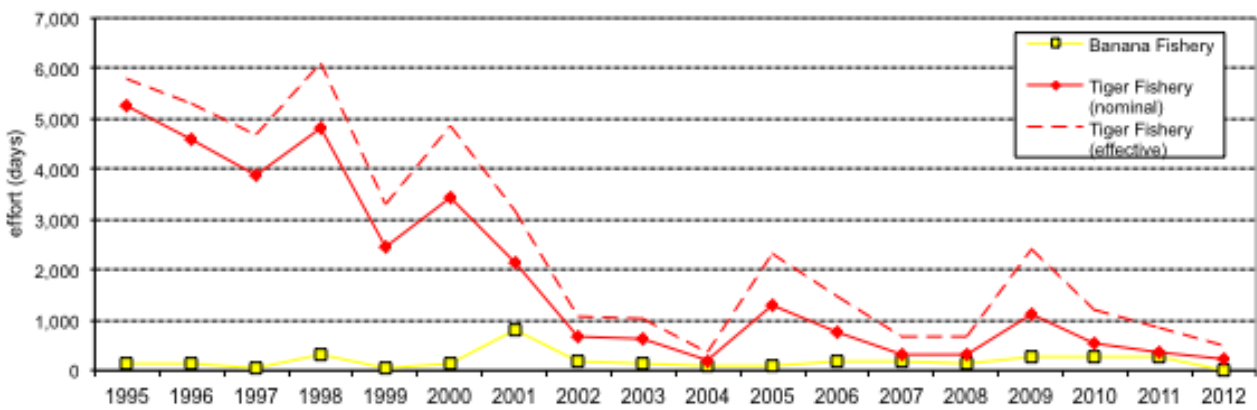


Figure 34a: Effort for the banana and tiger prawn fisheries in the Mornington area between 1995 and 2012.

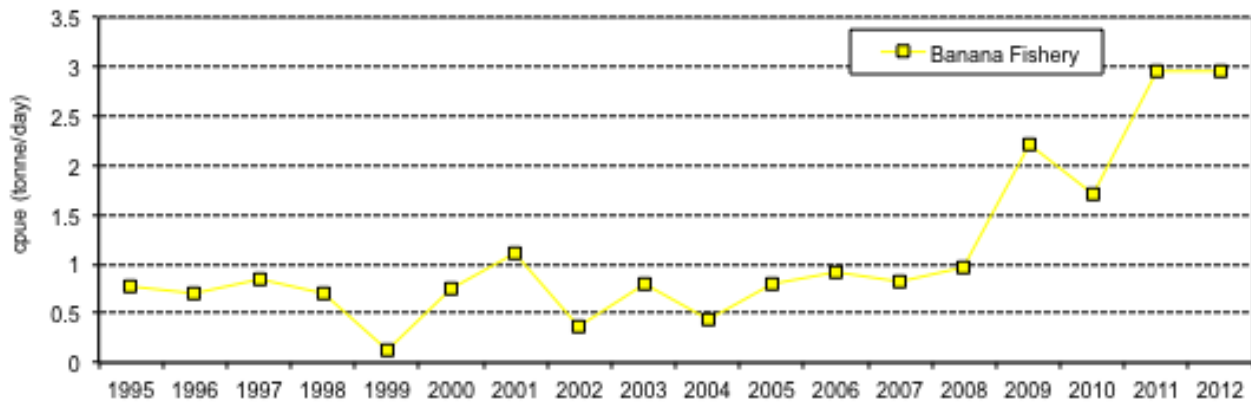


Figure 34b: Catch rate for the banana prawn fishery in the Mornington area between 1995 and 2012.



Figure 34c: Nominal and effective catch rate for the tiger prawn fishery in the Mornington area between 1995 and 2012.

Limmen Bight

Banana prawn catches in the Limmen Bight area decreased from 277 t in 2011 to 74 t in 2012. Catches of tiger prawns increased from 184 t in 2011 to 235 t in 2012. Endeavour prawn catches increased from 32 t in 2011 to 37 t in 2012 (Figure 35). Tiger prawns dominated in catch for 2012 in this area, comprising 62% of the total catch (Figure 36).

Effort in the banana fishery decreased from 139 days in 2011 to 43 days in 2012 (Figure 37a). CPUE of banana prawns decreased from 2.003 t per day in 2011 to 1.756 t per day in 2012 (Figure 37b). Effort in the tiger prawn fishery increased from 891 days in 2011 to 919 t in 2012 (Figure 37a). Nominal and effective CPUE of tiger prawns increased from 0.241 and 0.110 t per day in 2011, to 0.294 and 0.117 t per day, respectively (Figure 37c).

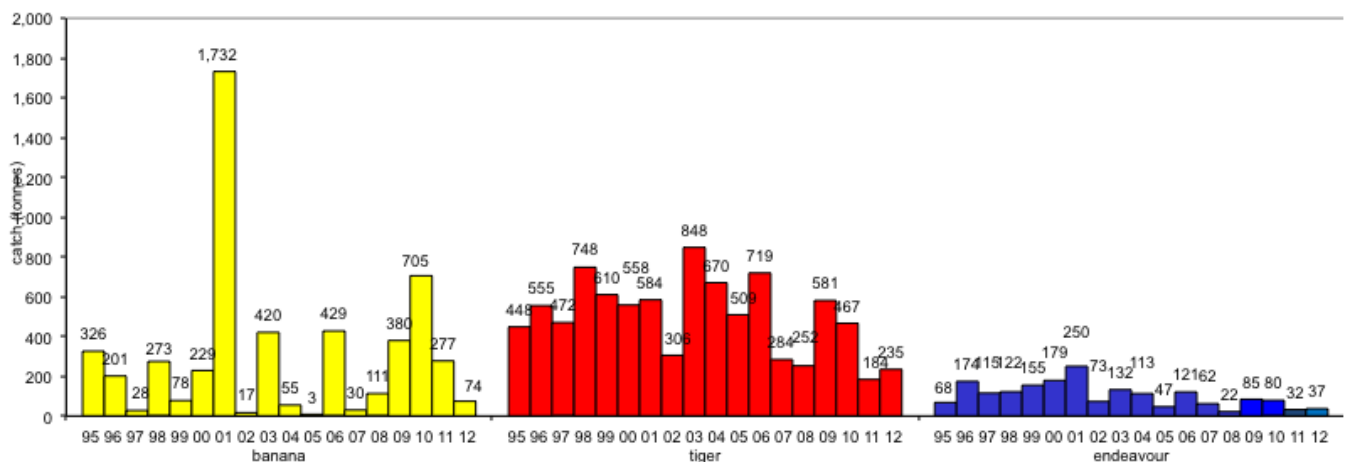
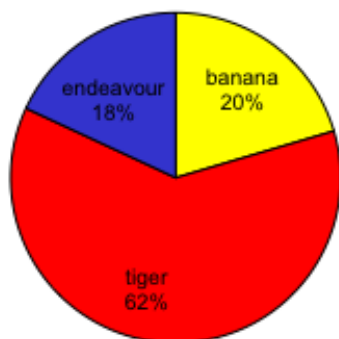


Figure 35: Catch by species in the Limmen Bight area between 1995 and 2012.

a)



b)

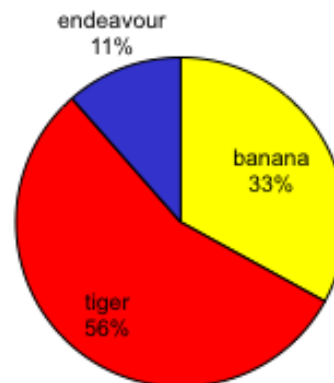


Figure 36: (a) Percentage catch of prawn species in the Limmen Bight area during 2012 and (b) percentage catch of prawn species in the Limmen Bight area from 1995 to 2012.

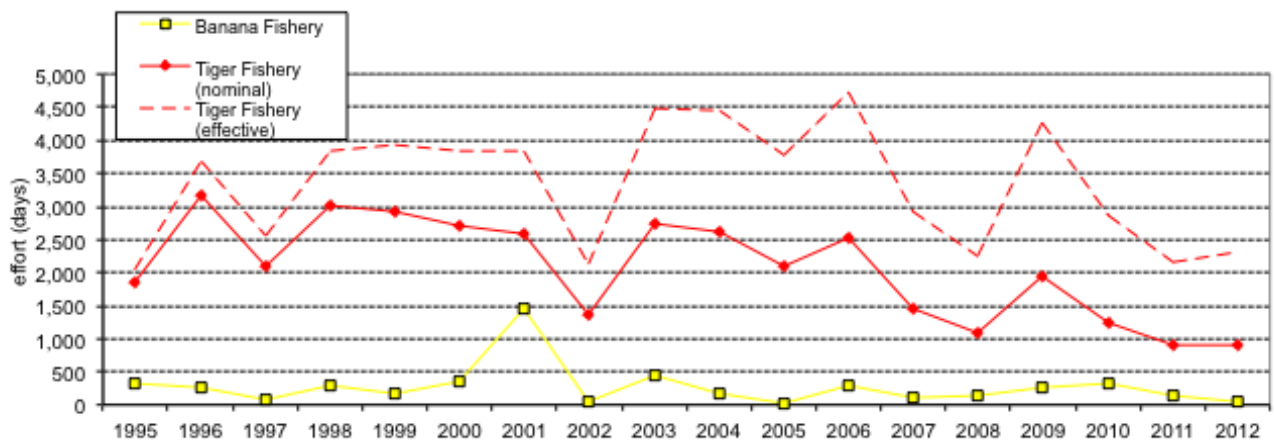


Figure 37a: Effort for the banana and tiger prawn fisheries in the Limmen Bight area between 1995 and 2012.

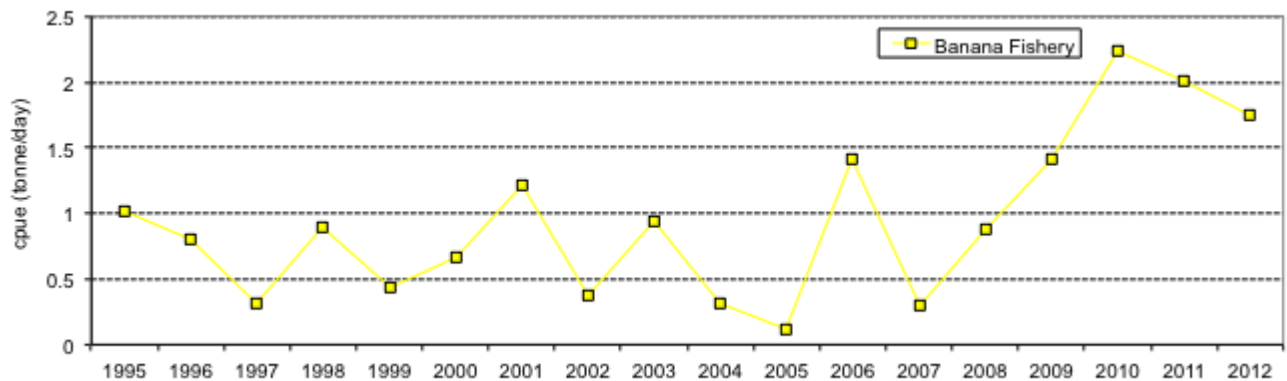


Figure 37b: Catch rate for the banana prawn fishery in the Limmen Bight area between 1995 and 2012



Figure 37c: Nominal and effective catch rate for the tiger prawn fishery in the Limmen Bight area between 1995 and 2012.

Groote

Banana prawn catches in the Groote area decreased from 264 t in 2011 to 44 t in 2012. Catches of tiger prawns increased from 191 t in 2011 to 287 t in 2012. Endeavour prawn catches decreased from 103 t in 2011 to 95 t in 2012 (Figure 38). In 2012, prawn catch comprised of 67% tiger prawns, 11% banana prawns and 22% endeavour prawns (Figure 39).

Effort in the banana fishery decreased from 380 days in 2011 to 51 in 2012 (Figure 40a). CPUE of banana prawns increased from 0.759 t per day in 2011 to 0.915 t per day in 2012 (Figure 40b). Effort in the tiger prawn fishery increased from 1045 days in 2011 to 1369 days in 2012 (Figure 40a). Nominal and effective CPUE of tiger prawns decreased from 0.259 and 0.106 t per day in 2011 to 0.277 and 0.110 in 2012, respectively (Figure 40c).

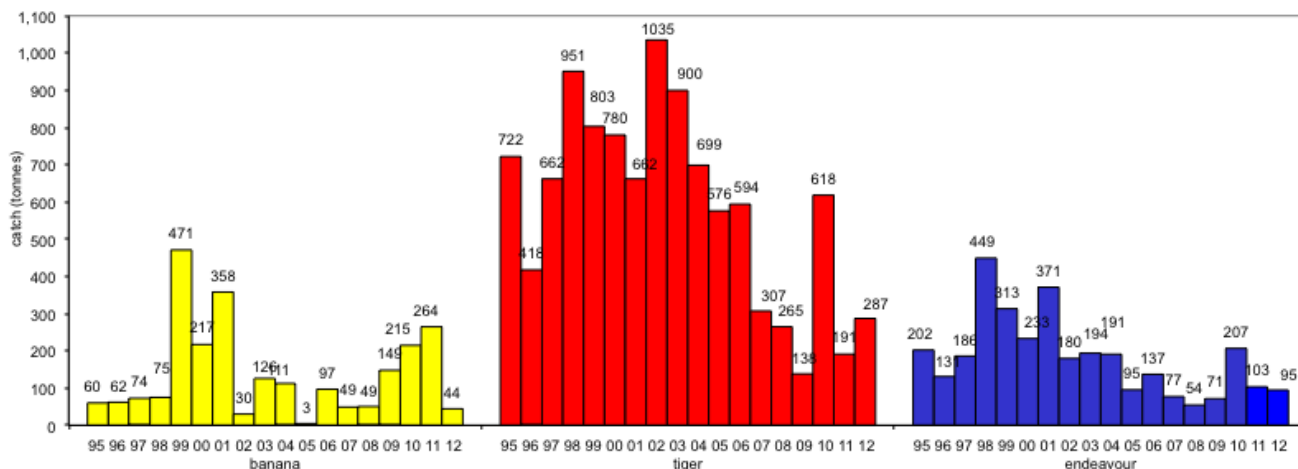
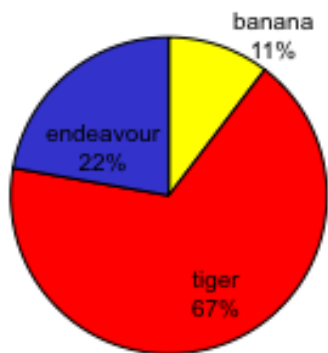


Figure 38: Catch by species in the Groote area between 1995 and 2012.

a)



b)

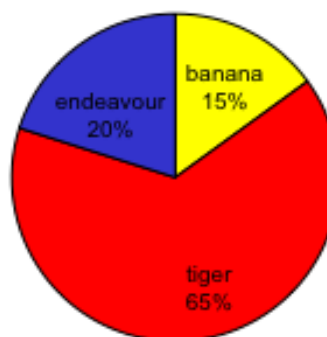


Figure 39: (a) Percentage catch of prawn species in the Groote area during 2012 and (b) percentage catch of prawn species in the Groote area from 1995 to 2012.

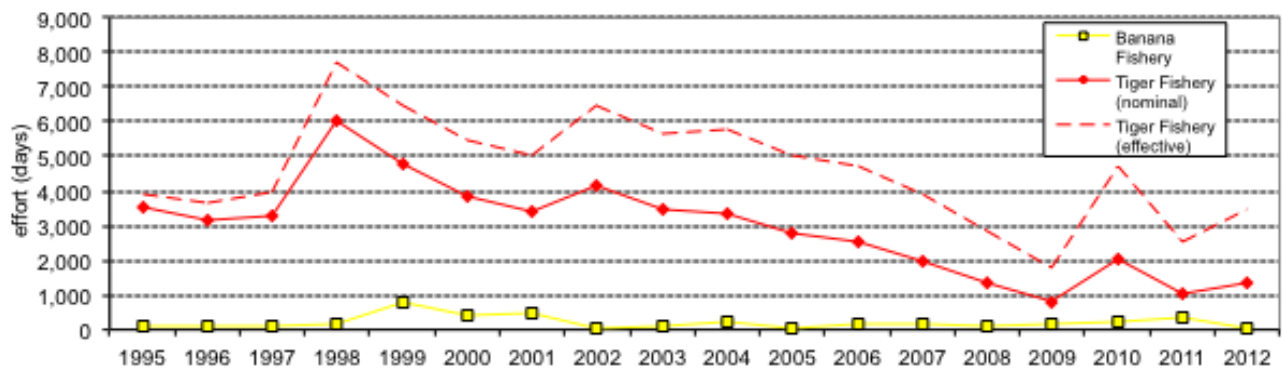


Figure 40a: Effort for the banana and tiger prawn fisheries in the Groote area between 1995 and 2012.

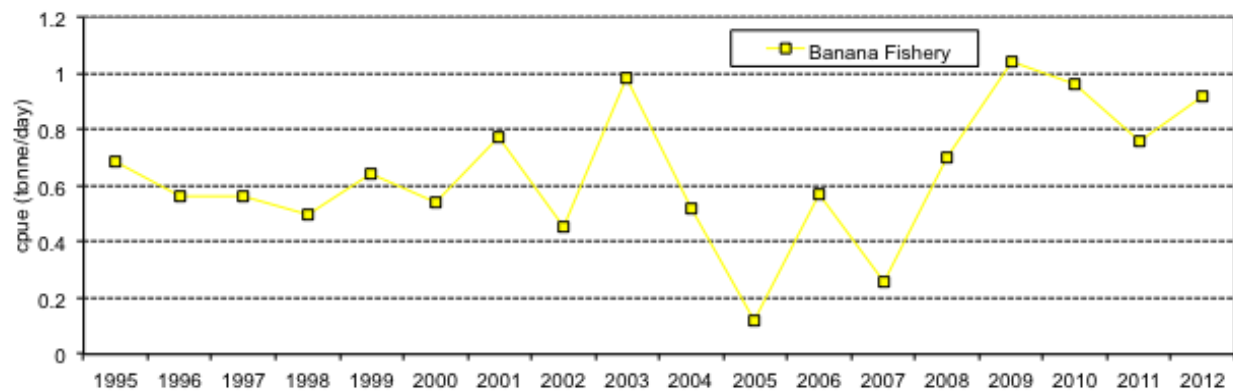


Figure 40b: Catch rate for the banana prawn fishery in the Groote area between 1995 and 2012.

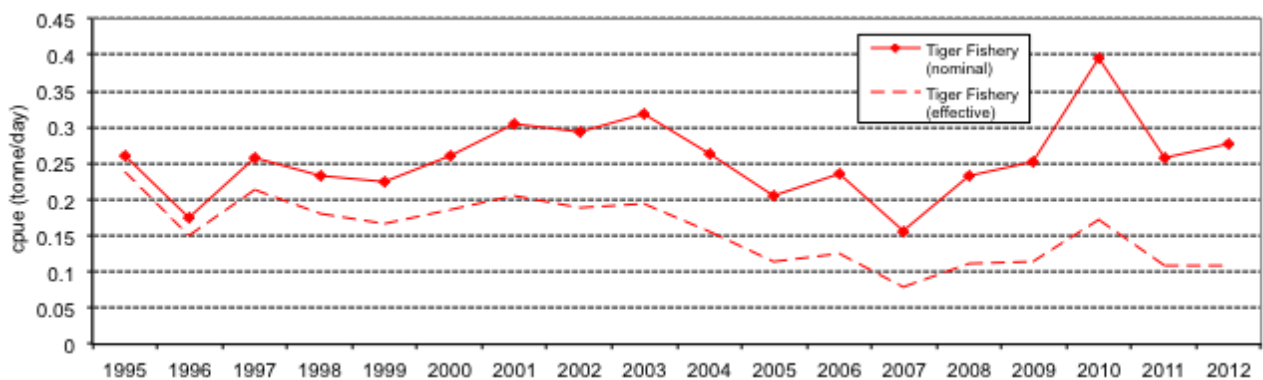


Figure 40c: Nominal and effective catch rate for the tiger prawn fishery in the Groote area between 1995 and 2012.

Gove

Banana prawn catches in the Gove area decreased from 97 t in 2011 to 77 t in 2012. Catches of tiger prawns increased from 83 t in 2011 to 162 t in 2012, whilst endeavour prawn catches decreased from 47 t in 2011 to 27 t in 2012 (Figure 41). Tiger prawns dominated the catch from this area in 2012, comprising 61% of the catch, with banana prawns making up 29% and endeavour prawns the remaining 10% (Figure 42).

Effort in the banana fishery decreased from 100 days in 2011 (Figure 43a) to 87 in 2012. CPUE of banana prawns decreased from 0.946 t per day in 2011 to 0.882 t per day in 2012 (Figure 43b). Effort in the tiger prawn fishery increased from 501 days in 2011 to 697 days in 2012 (Figure 43a). Nominal and effective CPUE for tiger prawns increased from 0.265 and 0.110 t per day in 2011 to 0.271 and 0.107 t per day in 2012 (Figure 43c).

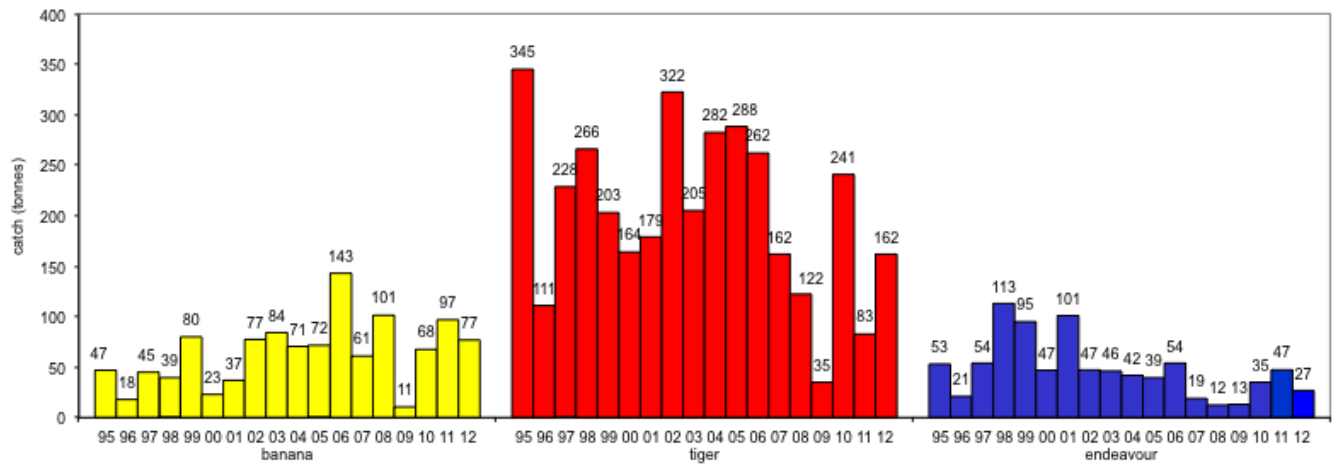
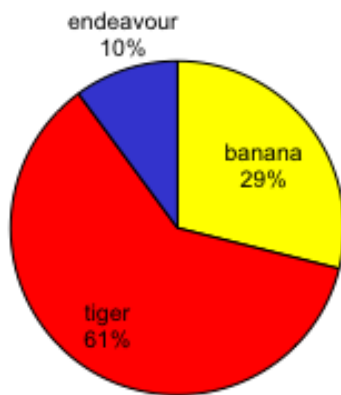


Figure 41: Catch by species in the Gove area between 1995 and 2012.

a)



b)

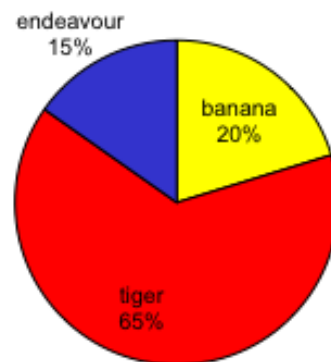


Figure 42: (a) Percentage catch of prawn species in the Gove area during 2012 and (b) percentage catch of prawn species in the Gove area from 1995 to 2012.



Figure 43a: Effort for the banana and tiger prawn fisheries in the Gove area between 1995 and 2012.

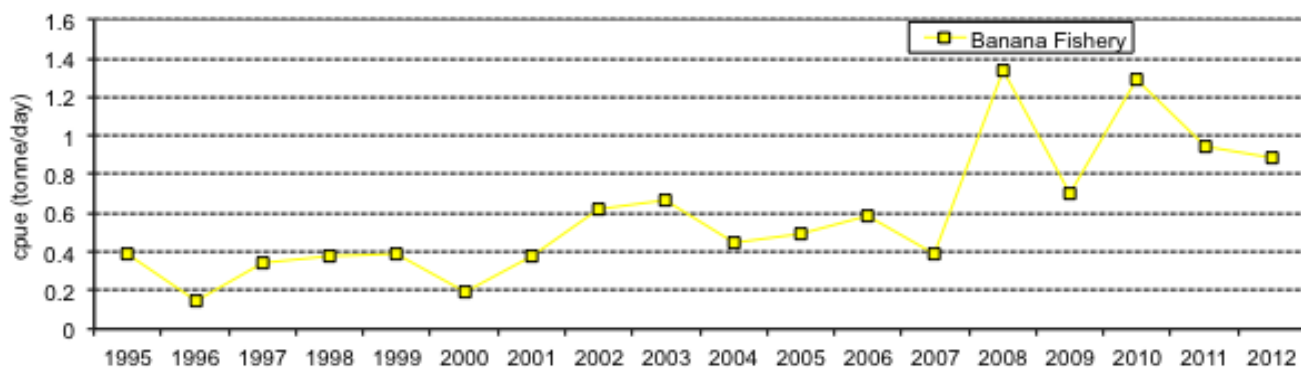


Figure 43b: Catch rate for the banana prawn fishery in the Gove area between 1995 and 2012.

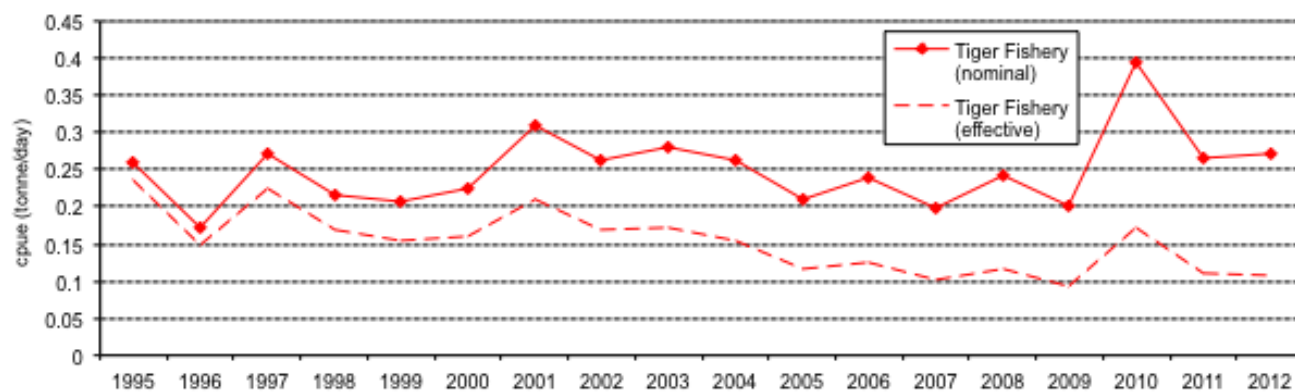


Figure 43c: Nominal and effective catch rate for the tiger prawn fishery in the Gove area between 1995 and 2012.

Arnhem

Banana prawn catches in the Arnhem area increased from 243 t in 2011 to 305 t in 2012. Catches of tiger prawns decreased from 8 t in 2011 to 5 t in 2012. Two tonnes of endeavour prawns were caught in 2011, with none caught in 2012 (Figure 44). Banana prawns dominated the catch for 2012, contributing to 98% of the catch (Figure 45).

Effort in the banana fishery increased from 98 days in 2011 to 102 days in 2012 (Figure 46a). CPUE of banana prawns increased from 2.473 t per day in 2011 to 2.994 t per day in 2012 (Figure 46b). Effort in the tiger prawn fishery decreased from 48 days in 2011 to 22 days in 2012 (Figure 46a). Nominal and effective CPUE of tiger prawns increased from 0.207 and 0.086 t per day respectively in 2011, to 0.221 and 0.087 t per day in 2012 (Figure 46c).

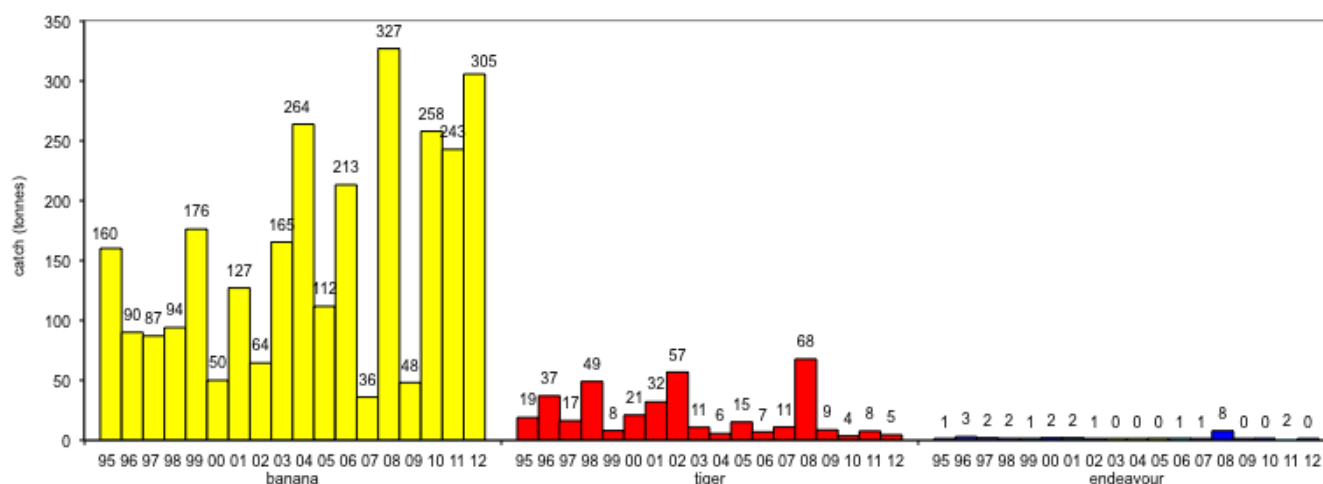
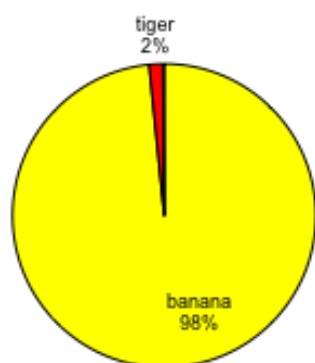


Figure 44: Catch by species in the Arnhem area between 1995 and 2012.

a)



b)

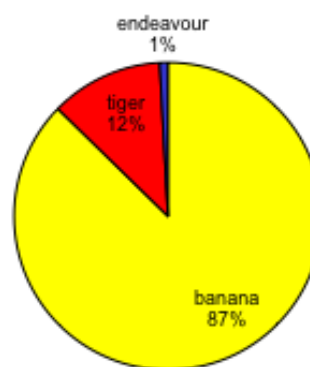


Figure 45: (a) Percentage catch of prawn species in the Arnhem area during 2012 and (b) percentage catch of prawn species in the Arnhem area from 1995 to 2012.

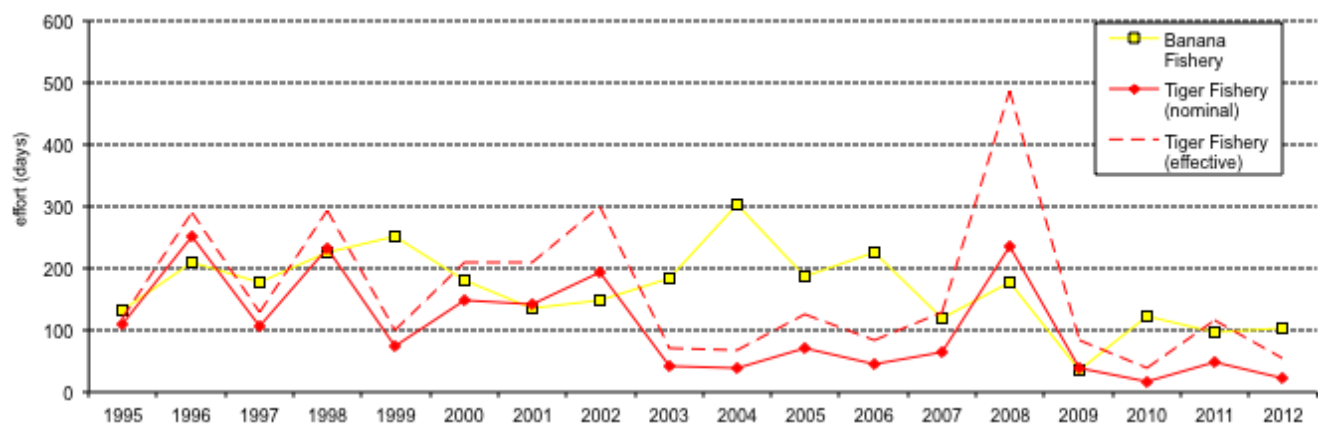


Figure 46a: Effort for the banana and tiger prawn fisheries in the Arnhem area between 1995 and 2012.

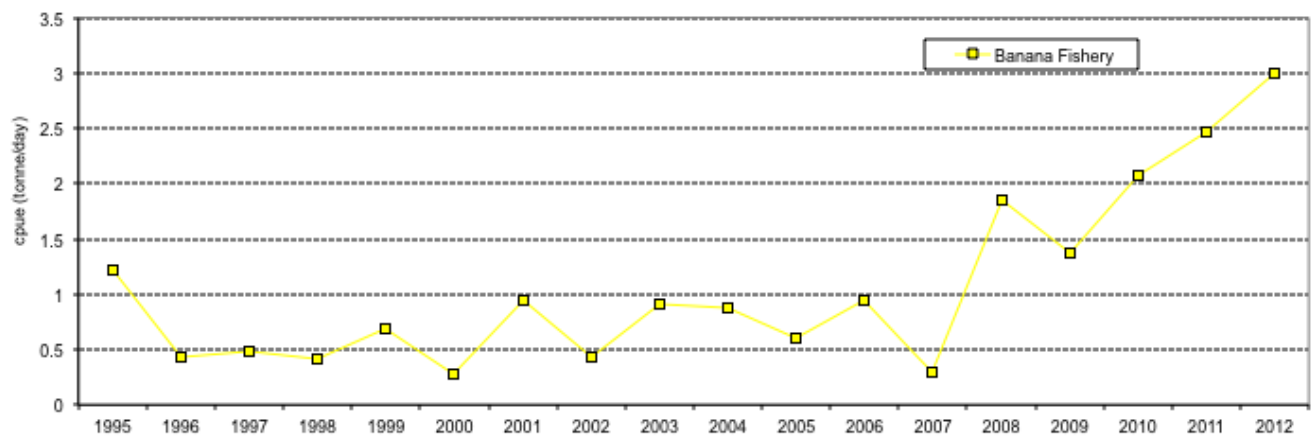


Figure 46b: Catch rate for the banana prawn fishery in the Arnhem area between 1995 and 2012.

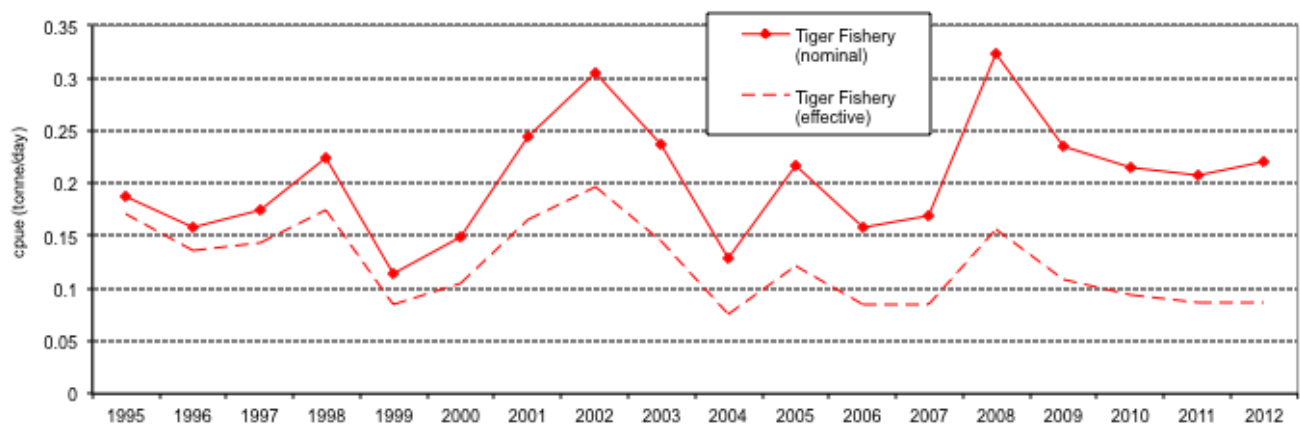


Figure 46c: Nominal and effective catch rate for the tiger prawn fishery in the Arnhem area between 1995 and 2012.

Port Essington

Banana prawn catches in the Port Essington area increased from 243 t in 2011 to 283 t in 2012. Tiger prawn catches increased from 21 t in 2011 to 38 t in 2012. Endeavour prawn catches decreased from 27 t in 2011 to 18 t in 2012 (Figure 47). Banana prawns dominated catches in 2012, comprising 84% of prawn catches from the Port Essington area. Tiger prawns made up 11% of catches, and endeavour prawns, the remaining 5% (Figure 48).

Effort in the banana fishery decreased from 236 days in 2011 to 188 days in 2012 (Figure 49a). CPUE of banana prawns increased from 1.066 t per day in 2011 to 1.545 t per day in 2012 (Figure 49b). Effort in the tiger prawn fishery increased from 92 days in 2011 to 124 days in 2012 (Figure 49a). Nominal and effective CPUE of tiger prawns decreased from 0.437 and 0.182 t per day respectively in 2011, to 0.385 and 0.152 t per day in 2012 (Figure 49c).

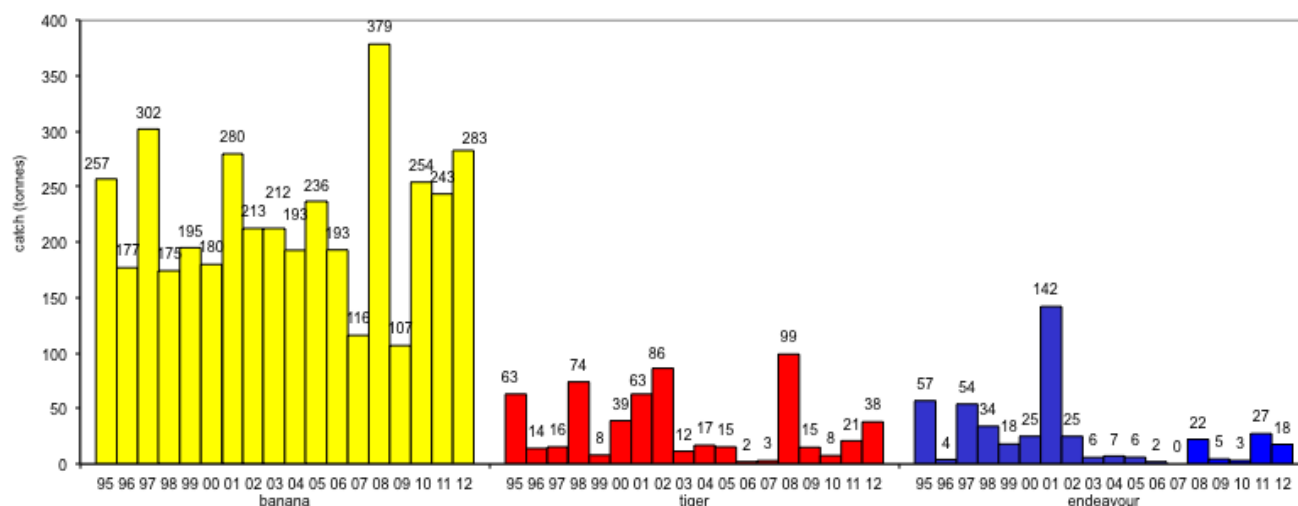
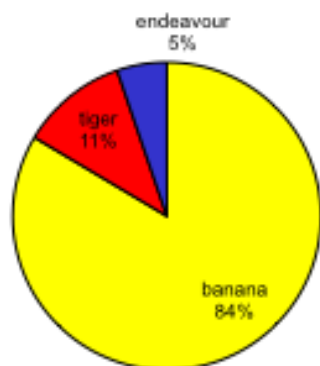


Figure 47: Catch by species in the Port Essington area between 1995 and 2012.

a)



b)

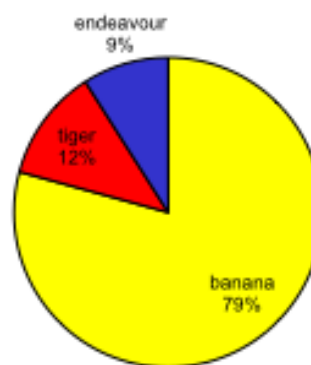


Figure 48: (a) Percentage catch of prawn species in the Port Essington area during 2012, and (b) percentage catch of prawn species in the Port Essington area from 1995 to 2012.

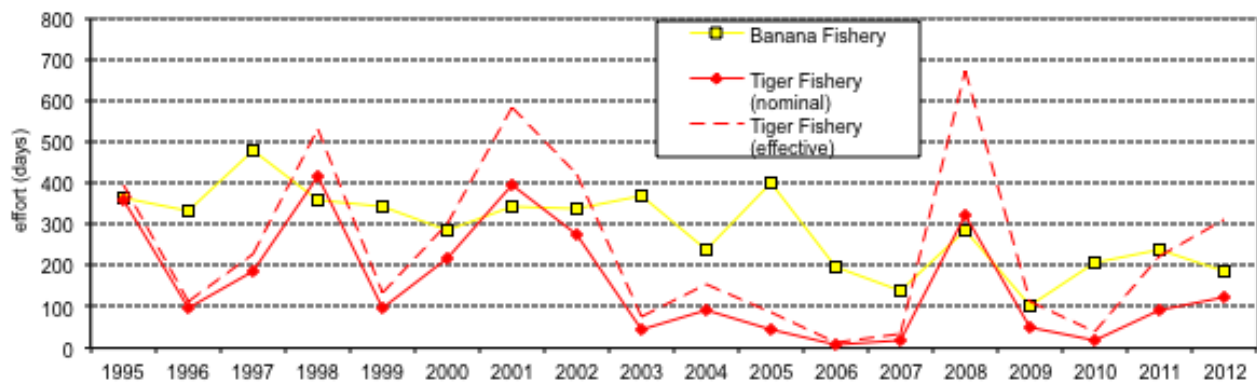


Figure 49a: Effort for the banana and tiger prawn fisheries in the Port Essington area between 1995 and 2012.

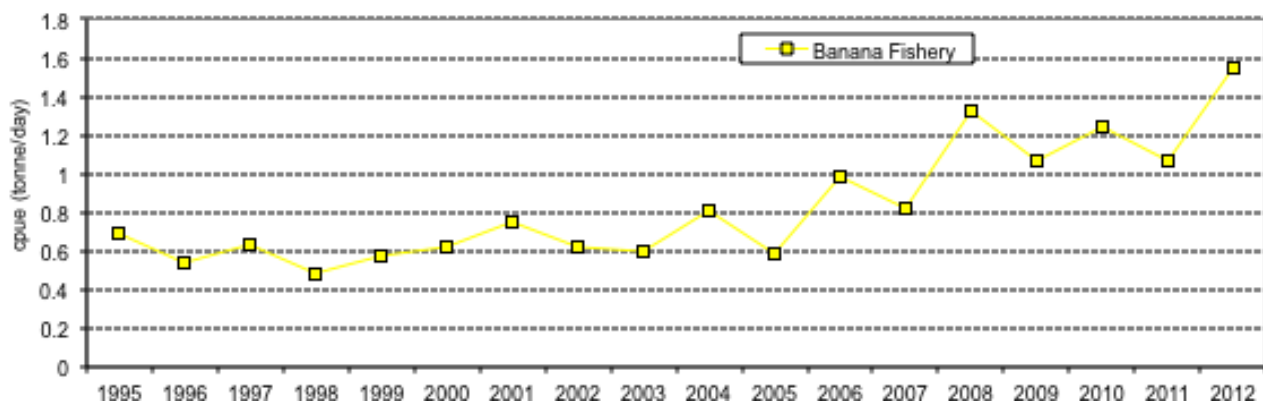


Figure 49b: Catch rate for the banana prawn fishery in the Port Essington area between 1995 and 2012.



Figure 49c: Nominal and effective catch rate for the tiger prawn fishery in the Port Essington area between 1995 and 2012.

Melville

Banana prawn catches in the Melville area increased from 356 t in 2011 to 370 t in 2012. Catches of tiger prawns went from 2 t in 2011 to 41 t in 2012. Endeavour prawn catches increased from 13 t in 2011 to 22 t in 2012 (Figure 50). Banana prawns comprised 85% of the catch in 2012, with tiger prawns making up 10%, and endeavor prawns, 5% (Figure 51).

Effort in the banana fishery increased from 259 days in 2011 to 312 in 2012 (Figure 52a). CPUE for banana prawns decreased from 1.384 t per day in 2011 to 1.209 in 2012 (Figure 52b). Effort in the tiger prawn fishery increased from 19 days in 2011 to 147 days in 2012 (Figure 52a). Nominal and effective CPUE for tiger prawns decreased from 0.660 and 0.274 t per day in 2011 to 0.381 and 0.151 t per day in 2012 (Figure 52c).

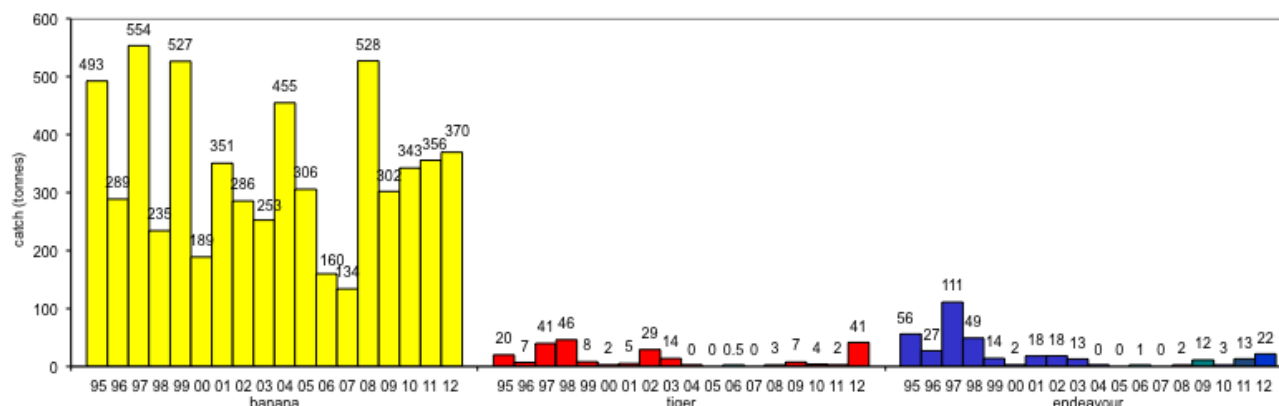
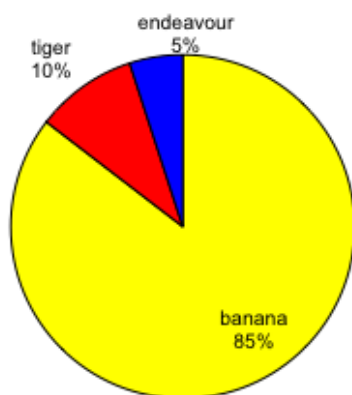


Figure 50: Catch by species in the Melville area between 1995 and 2012.

a)



b)

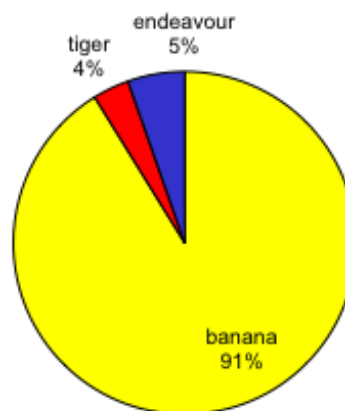


Figure 51: (a) Percentage catch of prawn species in the Melville area during 2012, and (b) percentage catch of prawn species in the Melville area from 1995 to 2012.

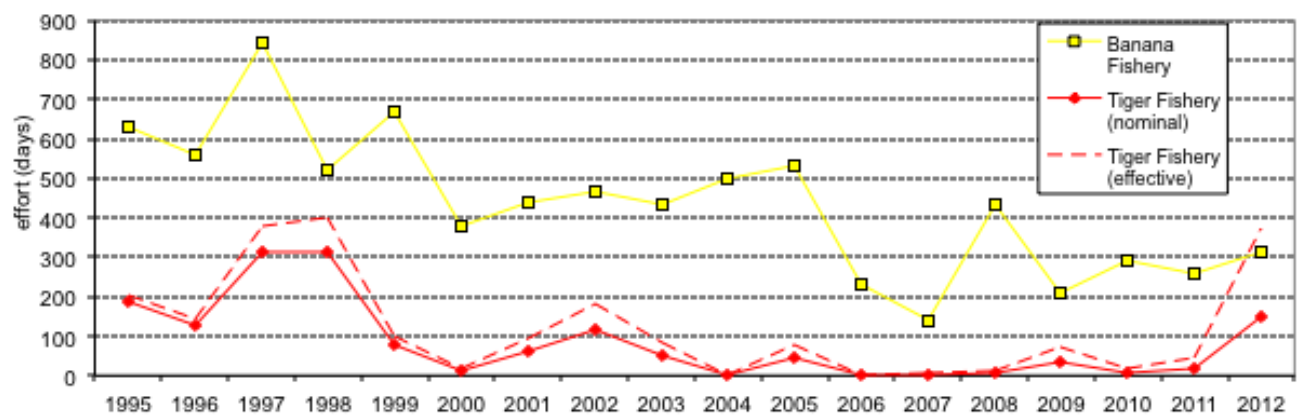


Figure 52a: Effort for the banana and tiger prawn fisheries in the Melville area between 1995 and 2012.

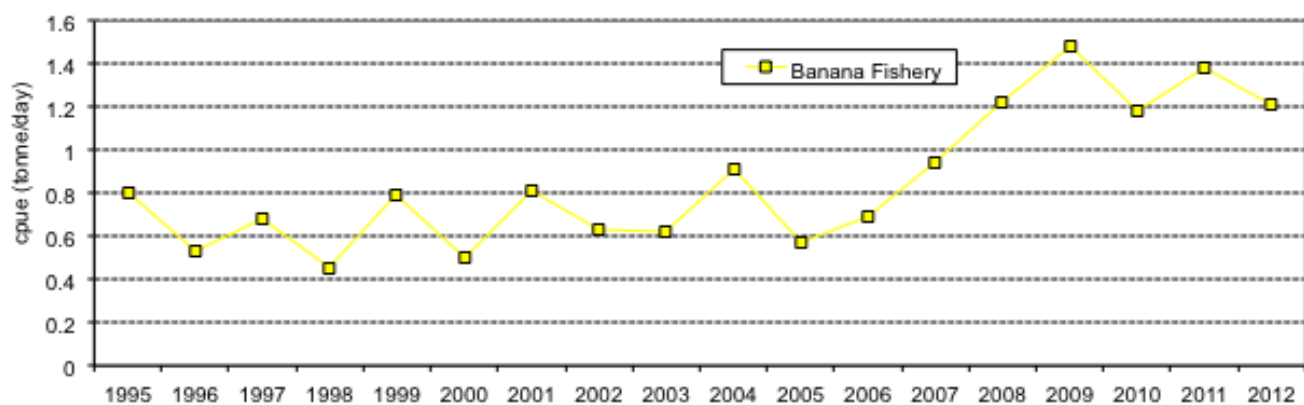


Figure 52b: Catch rate for the banana prawn fishery in the Melville area between 1995 and 2012.

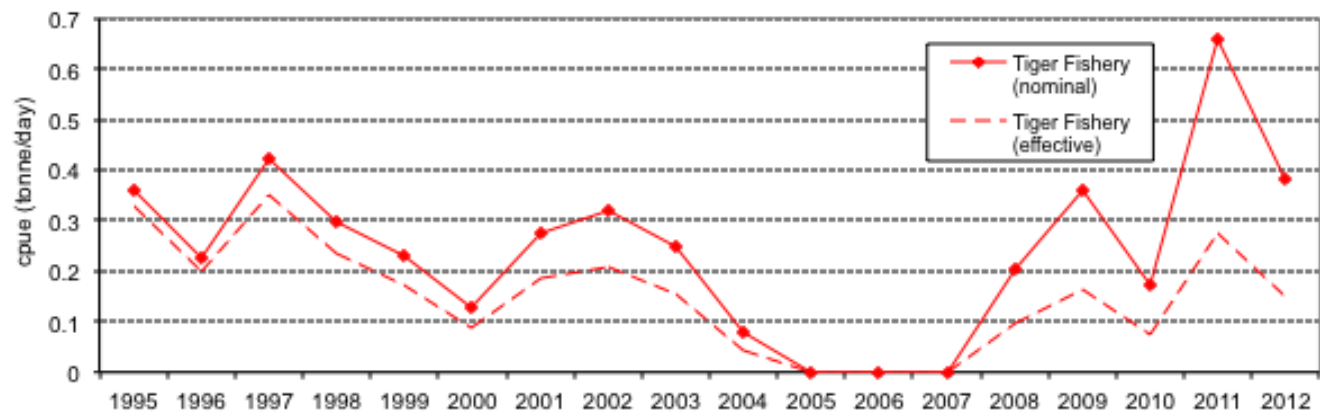


Figure 52c: Nominal and effective catch rate for the tiger prawn fishery in the Melville area between 1995 and 2012.

Fog Bay

Banana prawn catches in the Fog Bay area decreased from 286 t in 2011 to 233 t in 2012. Catches of tiger and endeavour prawns in 2012 were both <1 t, as in 2011 (Figure 53). Banana prawns comprised 100% of the catch taken during 2012 in this area (Figure 54).

Effort in the banana fishery decreased from 169 days in 2011 to 144 days in 2012 (Figure 55a). CPUE of banana prawns decreased from 1.692 t per day in 2011 to 1.621 t per day in 2012 (Figure 55b). No effort was expended in the tiger prawn fishery in 2012, as in 2011 (Figure 55a). Both nominal and effective CPUE were zero in 2012 (Figure 55c).

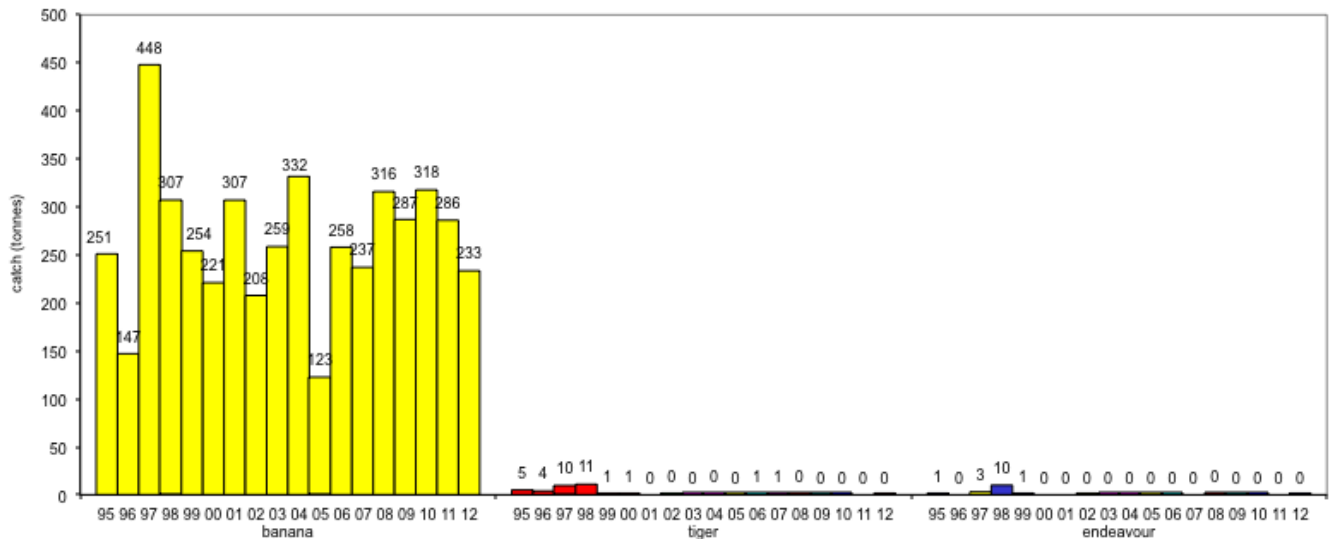
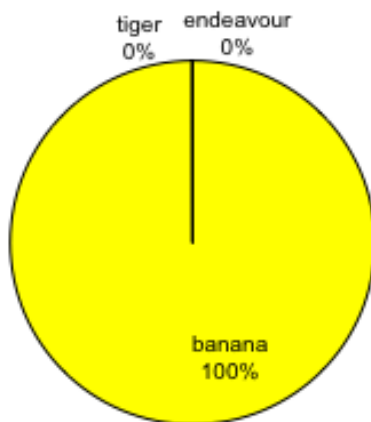


Figure 53: Catch by species in the Fog Bay area between 1995 and 2012.

a)



b)

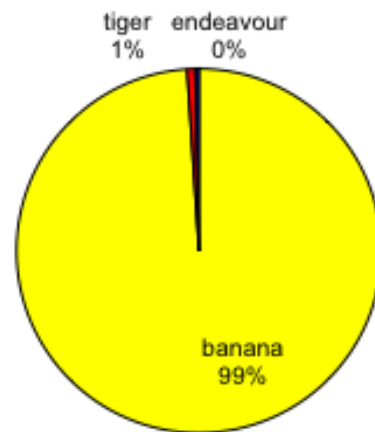


Figure 54: (a) Percentage catch of prawn species in the Fog Bay area during 2012 and (b) percentage catch of prawn species in the Fog Bay area from 1995 to 2012.

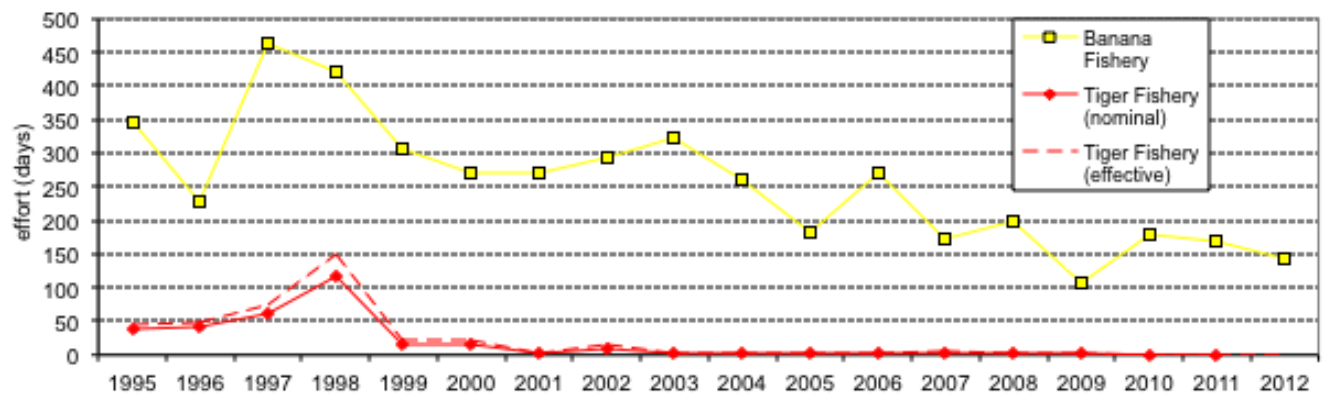


Figure 55a: Effort for the banana and tiger prawn fisheries in the Fog Bay area between 1995 and 2012.

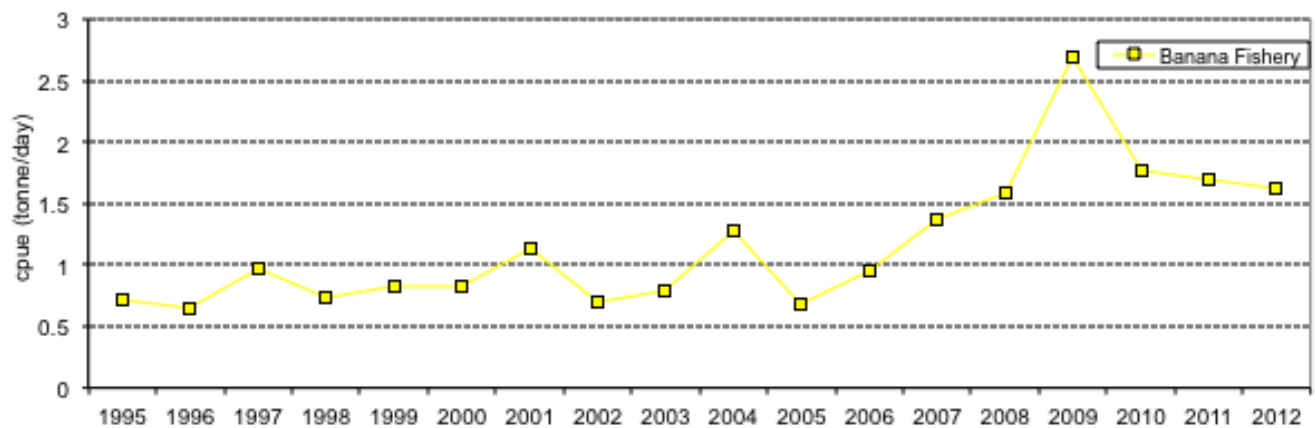


Figure 55b: Catch rate for the banana prawn fishery in the Fog Bay area between 1995 and 2012.

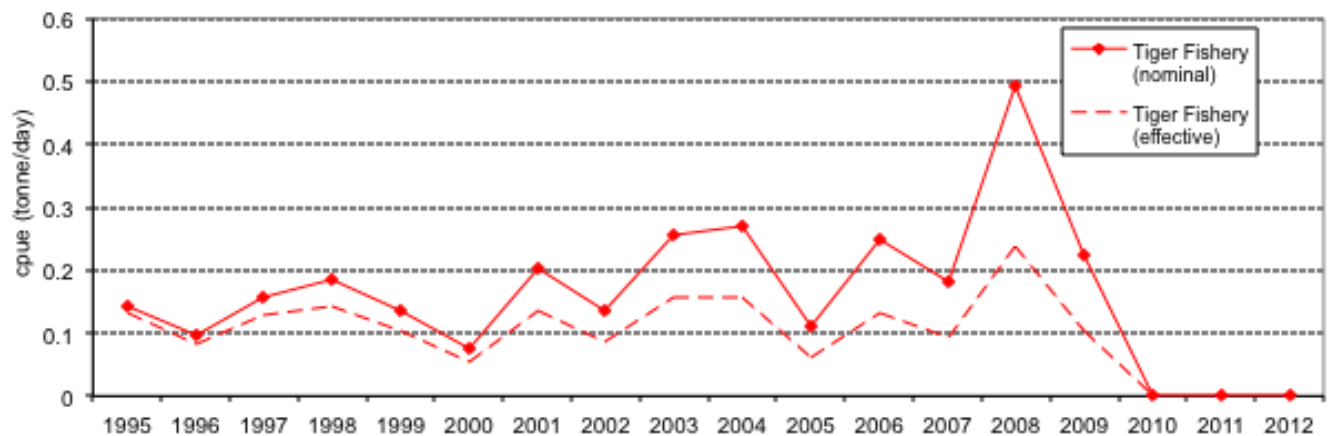


Figure 55c: Nominal and effective catch rate for the tiger prawn fishery in the Fog Bay area between 1995 and 2012.

Bonaparte

Banana prawn catches in the Bonaparte area decreased from 463 t in 2011 to 195 t in 2012. Tiger prawn catches decreased from 6 t in 2011 to 1 t in 2012, and endeavour prawn catches decreased from 85 t in 2011 to 2 t in 2012 (Figure 56). Banana prawns made up 100% of the catch for 2012 in this area in 2012 (Figure 57).

Effort in the banana fishery decreased from 345 days in 2011 to 132 days in 2012 (Figure 58a). CPUE of banana prawns increased from 1.369 t per day in 2011 to 1.499 t in 2012 (Figure 58b). Effort in the tiger prawn fishery decreased from 100 days in 2011 to zero days in 2012 (Figure 58a). Nominal and effective CPUE of tiger prawns decreased from 0.815 and 0.338 t per day in 2011 to zero in 2012 (Figure 58c).

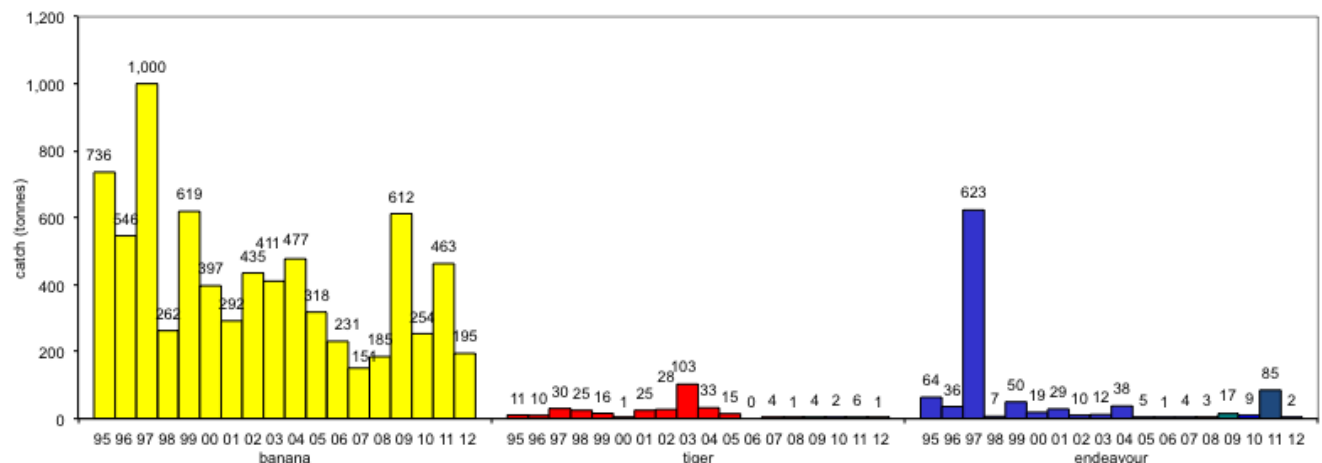
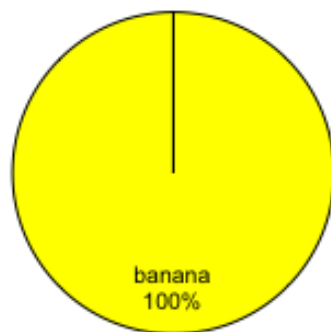


Figure 56: Catch by species in the Bonaparte area between 1995 and 2012.

a)



b)

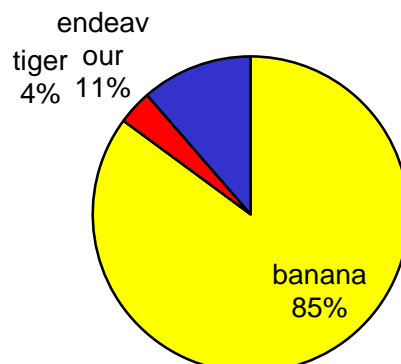


Figure 57: (a) Percentage catch of prawn species in the Bonaparte area during 2012, and (b) percentage catch of prawn species in the Bonaparte area from 1995 to 2012.

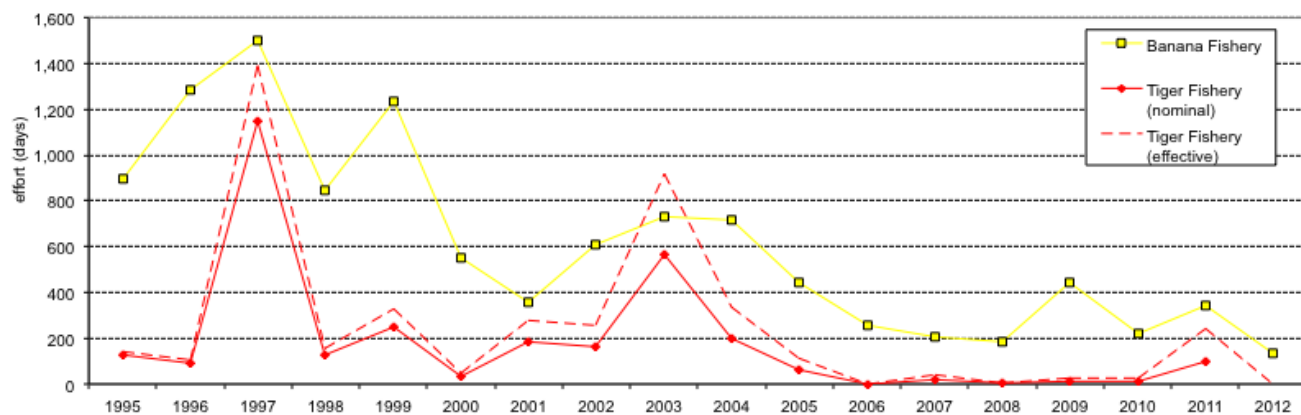


Figure 58a: Effort for the banana and tiger prawn fisheries in the Bonaparte area between 1995 and 2012.

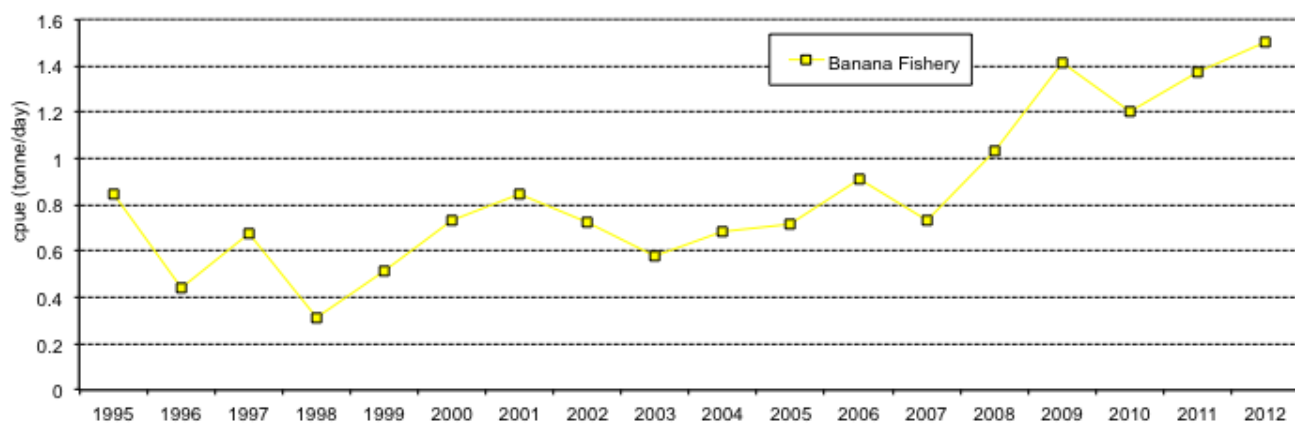


Figure 58b: Catch rate for the banana prawn fishery in the Bonaparte area between 1995 and 2012.

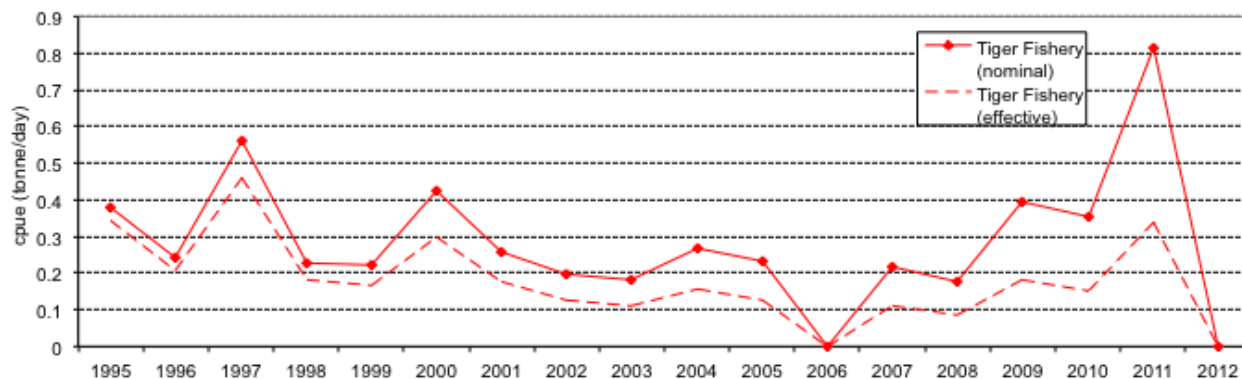


Figure 58c: Nominal and effective catch rate for the tiger prawn fishery in the Bonaparte area between 1995 and 2012.

Interactions with TEP species in the Northern Prawn Fishery

Turtle interactions

A total of 64 turtle interactions were reported in the NPF during 2012 (Table 5). Green turtles were the most numerous (31 interactions), followed by turtles of undetermined species (14 interactions). Seven interactions occurred with Pacific Ridley turtles, and six interactions took place with Flatback turtles. All except three green turtles were released alive. Turtle interactions were highest in the Groote region, which was also the area of highest fishing effort (Figure 60).

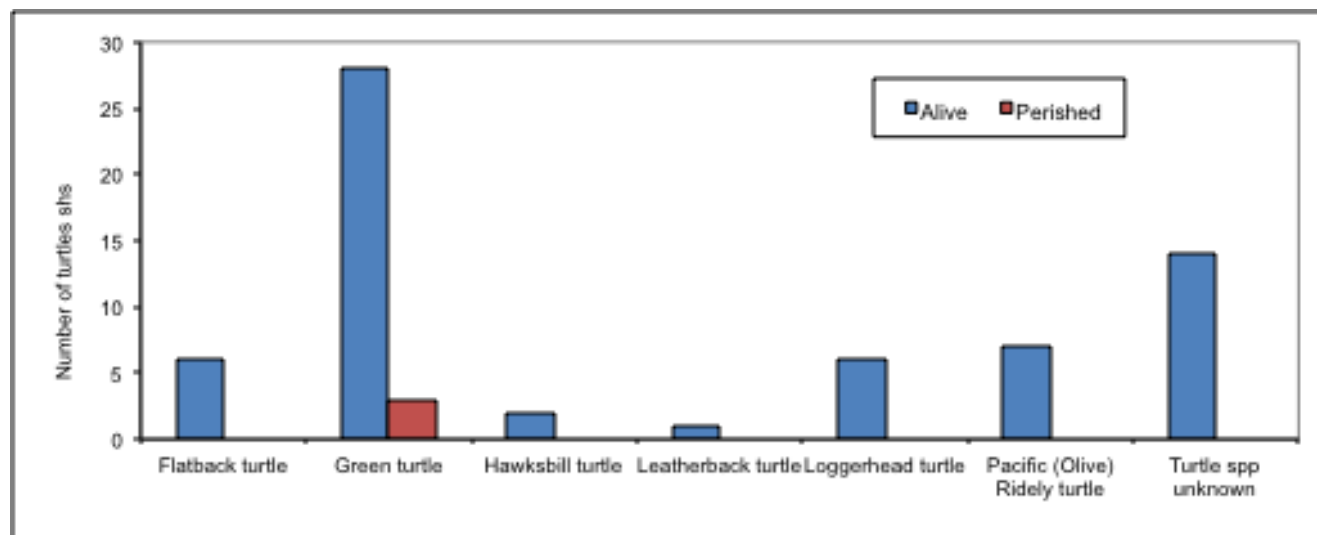


Figure 59: Turtle interactions in the NPF by area (2012).

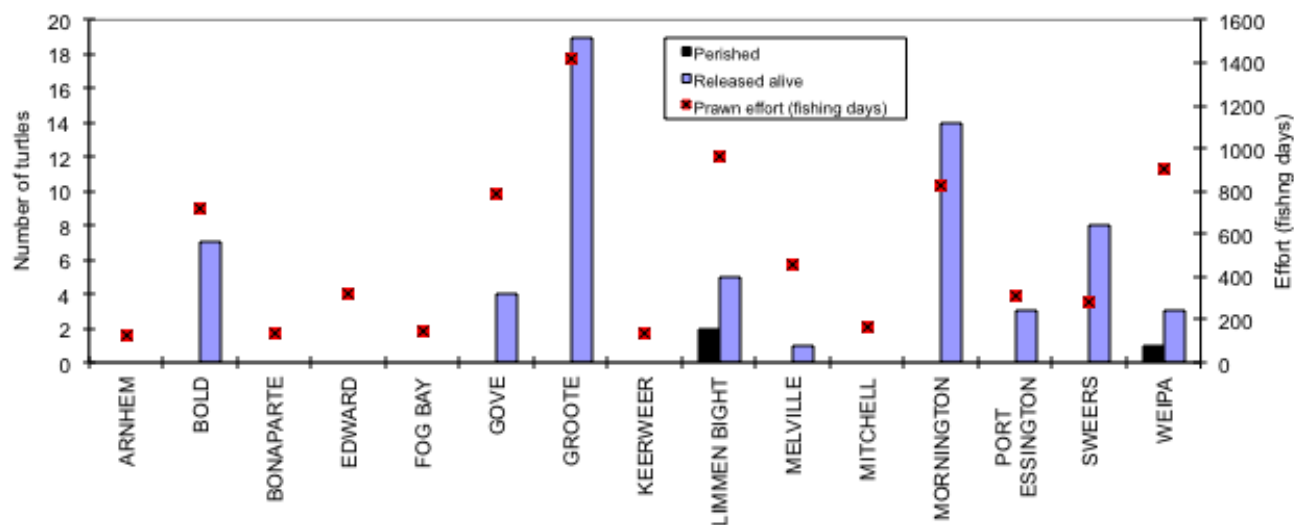


Figure 60: Turtle interactions in the NPF by species (2012).

Table 5: Turtle interactions by species, for each area between 2008 and 2012.

Statistical Area	Turtle Species	Released Alive					Perished					Condition Unknown				
		08	09	10	11	12	08	09	10	11	12	08	09	10	11	12
ARNHEM	Flatback															
	Green		1													
	Hawksbill		1													
	Leatherback															
	Loggerhead	1														
	Pacific Ridley															
BOLD	Unidentified species	2														
	Flatback	4	1	1												
	Green			1		4										
	Hawksbill	1														
	Leatherback															
	Loggerhead					2										
BONAPARTE	Pacific Ridley					1										
	Unidentified species		1													
	Flatback															
	Green															
	Hawksbill															
	Leatherback															
EDWARD	Loggerhead															
	Pacific Ridley															
	Unidentified species	1	2													
	Flatback															
	Green															
	Hawksbill															
FOG BAY	Leatherback															
	Loggerhead															
	Pacific Ridley															
	Unidentified species															
	Flatback															
	Green															
GOVE	Hawksbill															
	Leatherback															
	Loggerhead					1										
	Pacific Ridley															
	Unidentified species	2		1												
	Flatback			2												
GROOTE	Green				1	3										
	Hawksbill															
	Leatherback															
	Loggerhead															
	Pacific Ridley															
	Unidentified species	1	7			8										
LIMMEN BIGHT	Flatback	1	1	2												
	Green		1	1		4					2					
	Hawksbill	1														
	Leatherback															
	Loggerhead															
	Pacific Ridley			5		1										
MELVILLE	Unidentified species		9	2	1			3								
	Flatback															
	Green					1										
	Hawksbill															
	Leatherback															
	Loggerhead															
MITCHELL	Pacific Ridley															
	Unidentified species			1			1									
	Flatback															
	Green			3												
	Hawksbill															
	Leatherback															
	Loggerhead															

Statistical Area	Turtle Species	Released Alive					Perished					Condition Unknown				
		08	09	10	11	12	08	09	10	11	12	08	09	10	11	12
	Pacific Ridley															
	Unidentified species	1	1													
MORNINGTON	Flatback					2										
	Green		4	1	4	8										
	Hawksbill															
	Leatherback															
	Loggerhead	1														
	Pacific Ridley	2	1	1		1										
	Unidentified species		7			3										
PORT ESSINGTON	Flatback					2										
	Green					1										
	Hawksbill															
	Leatherback															
	Loggerhead															
	Pacific Ridley	1														
	Unidentified species	1	1													
SWEERS	Flatback	2														
	Green					2										
	Hawksbill					1										
	Leatherback															
	Loggerhead					3										
	Pacific Ridley															
	Unidentified species					2										
WEIPA	Flatback	1				1										
	Green			4						1						
	Hawksbill															
	Leatherback					1										
	Loggerhead															
	Pacific Ridley															
	Unidentified species	3	2			1										
TOTAL ALL AREAS	Flatback	8	2	6	3	6										
	Green		7	11	6	28				3						
	Hawksbill	2	1			2										
	Leatherback					1										
	Loggerhead	2				6										
	Pacific Ridley	3	1	6		7										
	Unidentified species	11	30	4	1	14	1	3								
GRAND TOTAL	ALL SPECIES	26	41	27	20	128	1	3	0	0	3	0	0	0	0	0

Sea snake interactions

A total of 7,669 sea snake interactions were recorded during 2012. The majority of sea snakes (5,998 individuals, representing 78% of the total) were released alive. 743 (10%) perished, 82 (1%) were released injured, and 846 (11%) of sea snakes caught were released with condition unknown (Table 6). Sea snake interactions were significantly higher in the Groote area (1,815 individuals), followed by Weipa (1401 individuals), and was lowest at Bonaparte (39), followed by Fog Bay (69). The number of sea snakes interactions recorded in 2012 was up 1,856 compared to 2011 (7669 interactions were reported in 2012, compared to 5813 in 2011). The percentage of sea snakes released alive in 2012 was also comparable to 2011 (82%).



Table 6: Sea snake interactions by area in the NPF (2012).

Statistical area	Released alive	Perished	Released injured	Condition unknown	Total
ARNHEM	70	5			75
BOLD	478	61	5	139	683
BONAPARTE	38	1			39
EDWARD	157	24	1	20	202
FOG BAY	63	6			69
GOVE	384	30	1	105	520
GROOTE	1576	127	14	98	1815
KEERWEER	80	13	1	51	145
LIMMEN BIGHT	642	81	5	5	733
MELVILLE	631	159	7		797
MITCHELL	99	9	4		112
MORNINGTON	613	87	14	5	719
PORT					
ESSINGTON	213	18	12		243
SWEERS	104	4		8	116
WEIPA	850	118	18	415	1401
Total	5,998	743	82	846	7,669

Scientific Observer and Crew Member Observer coverage

Tables 7 and 8 enable comparison of recorded interactions with TEP species within the Crew Member Observer (CMO), Scientific Observer and logbook datasets.

In 2012, the number of fishing days from logbook returns (7,690 days) was a slight increase compared to 2011 (7583 days). The number of days observed by CMOs increased significantly from 798 in 2011 to 962 in 2012. The number of days observed by Scientific Observers was reduced in 2012 at 167 days compared to 2011, at 183 days.

Highest catches of seasnakes, turtles, and sawfish were reported in logbook data, with highest catches of Syngnathids reported in CMO data (Table 7). The highest number of sea snake interactions (7583) were reported in logbook data (Table 7). Two dolphin captures were reported in 2012 – an unusual occurrence in the NPF.

Interaction frequency reported for TEP species groups were generally slightly higher in the Scientific Observer dataset for all species groups with the exception of turtles, for which a higher interaction frequency was reported in the CMO dataset (Table 8).

There has been a notable increases in the volume of information collected by CMOs, which is likely to be a result of a revitalised incentive program implemented by NPF SFR holders for meeting targets for verified data collection.

Table 7: Comparison of TEP species interactions reported by Scientific Observers, CMOs and in logbooks in the NPF during the 2012 tiger prawn season.

	Vessel Returns	Fishing Days	Total Sea Snakes	Total Turtles	Total Syngnathids	Total Sawfish	Dolphins
Logbook Returns	53	7690	7669	67	4	596	2
Crew Member Observers	13	962	1381	39	119	91	0
Scientific Observers*	8	167	292	6	47	54	0

*Days fishing practices were observed.

**Scientific observer data includes data collected during gear trials.

Table 8: Comparison of TEP species interactions reported by Scientific Observers, CMOs and in logbooks per boat day during in the NPF during the 2012 tiger prawn season.

	Sea Snakes per Fishing Day	Turtles per Fishing Day	Syngnathids per Fishing Day	Sawfish per Fishing Day
Logbook Returns	0.997	0.009	0.001	0.078
Crew Member Observers	1.436	0.041	0.124	0.095
Scientific Observers*	1.749	0.036	0.281	0.323

*Scientific observer data include data collected during gear trials.

State/Territory specific data

Total prawn catch in Queensland (QLD) managed fisheries decreased in 2011/12, from 5,391 in 2010/11 to 3,232 in 2011/12. Total prawn catch also decreased in Northern Territory (NT) managed fisheries, from 1448 t in 2010/11 to 1,230 in 2011/12. Conversely, prawn catches increased in Western Australia (WA) managed fisheries, from 117 t in 2010/11 to 4,484t in 2011/12.

Banana prawn catch decreased in QLD from 5,388 in 2010/11 to 3,181 t in 2011/12. Banana prawn catch decreased in the NT from 1,447 t in 2010/11 to 1,224 t in 2011/12. Banana prawn catch in WA increased from 117 t in 2010/11 to 4,426 t in 2011/12 (Table 9).

Tiger prawn catches increased in QLD, from 3 t in 2010/11 to 49 t in 2011/12. Tiger prawn catches also increased in the NT and WA, from less than 1 t in each jurisdiction to 3 t and 52 t, respectively.

Catches of both endeavour prawns were 2 t in QLD, 3 t in NT and 5 t in WA. (Table 9).

Table 9: Prawn catch by State/Territory from 1990/91 to 2011/12 financial years.

State	Financial Year	Banana (t)	Tiger (t)	Endeavour (t)	King (t)	Total Catch (t)
Queensland	1990/91	4,646	1,151	269	51	6,117
	1991/92	1,392	1,710	548	30	3,680
	1992/93	1,857	968	357	18	3,200
	1993/94	904	1,032	416	8	2,360
	1994/95	2,540	1,883	346	24	4,793
	1995/96	2,562	1,570	761	23	4,916



State	Financial Year	Banana (t)	Tiger (t)	Endeavour (t)	King (t)	Total Catch (t)
	1996/97	2,050	1,259	817	15	4,141
	1997/98	1,986	1,318	878	11	4,193
	1998/99	1,548	634	335	5	2,522
	1999/00	637	629	348	1	1,615
	2000/01	3,651	553	352	4	4,560
	2001/02	3,286	372	211	1	3,870
	2002/03	1,307	97	54	1	1,459
	2003/04	1,639	152	14	0	1,805
	2004/05	1,700	70	7	0	1,777
	2005/06	1,384	217	46	9	1,656
	2006/07	1,839	192	46	8	2,085
	2007/08	3,578	126	32	8	3,744
	2008/09	3,858	8	0	0	3,866
	2009/10	2,952	17	0	0	2,969
	2010/11	5,388	3	0	0	5,391
	2011/12	3,181	49	2	0	3,232
Northern Territory	1990/91	1,430	2,156	380	46	4,012
	1991/92	669	2,332	434	27	3,462
	1992/93	1,639	1,907	437	18	4,001
	1993/94	697	1,768	403	18	2,886
	1994/95	1,536	1,855	423	19	3,833
	1995/96	1,072	1,615	434	6	3,127
	1996/97	1,472	1,184	387	9	3,052
	1997/98	1,241	1,466	490	9	3,206
	1998/99	1,549	2,141	778	6	4,474
	1999/00	1,247	1,564	586	11	3,408
	2000/01	2,323	1,546	489	3	4,361
	2001/02	1,789	1,561	892	1	4,243
	2002/03	1,509	1,797	333	2	3,641
	2003/04	1,437	1,985	390	1	3,813
	2004/05	838	1,683	368	2	2,891
	2005/06	1,495	1,587	316	19	3,417
	2006/07	783	1,582	304	19	2,688
	2007/08	1,550	1,100	164	12	2,826
	2008/09	930	1	0	0	931
	2009/10	1,868	4	3	0	1,875
	2010/11	1,447	0	1	0	1,448
Western Australia	2011/12	1,224	3	3	0	1,230
	1990/91	579	86	42	0	707
	1991/92	231	8	11	0	250
	1992/93	498	5	6	0	509
	1993/94	828	4	13	0	845
	1994/95	414	2	16	0	432
	1995/96	713	18	65	0	796
	1996/97	1,079	5	38	0	1,122
	1997/98	756	66	686	1	1,509
	1998/99	519	23	17	0	559
	1999/00	329	2	38	0	369
	2000/01	281	16	23	0	320
	2001/02	345	23	28	0	396
	2002/03	509	75	8	0	592
	2003/04	461	49	13	0	523
	2004/05	293	29	36	0	358



State	Financial Year	Banana (t)	Tiger (t)	Endeavour (t)	King (t)	Total Catch (t)
	2005/06	231	0	1	0	232
	2006/07	108	190	0	0	298
	2007/08	151	5	4	0	160
	2008/09	72	0	0	0	72
	2009/10	0	0	0	0	0
	2010/11	117	0	0	0	117
	2011/12	4,426	52	5	0	4,484

Retained Byproduct in the Northern Prawn Fishery by State/Territory waters

Total byproduct retained in the NPF by State/Territory in 2012 was 115,078 kg, with highest retained byproduct levels observed in QLD waters, and lowest in WA waters. Moreton bay bugs were the largest component of byproduct catches, with 47,493 kg retained, up 85% on 2011, in which year 25,573 kg of bugs was retained (Table 10).

Table 10: Retained byproduct in the NPF by State/Territory in 2012 (kilograms).

Species	NT	QLD	WA	Total
Australian scampi	18,412			18,412
Bugs - Shovel nosed and slipper lobsters	5,205	12,644		17,849
Champagne lobster - Spear lobster	3,053		8	3,061
Commercial scallop	7,500			7,500
Coral prawns	247			247
Cuttlefishes	3,080	942		4,022
Diamondscale mullet		89		89
Golden snapper - Fingermark seaperch		152		152
Herring	27			27
Mangrove Jack	60			60
Mixed fish	10	40		50
Moreton Bay bugs	25,311	22,182		47,493
Mud scallop	460			460
Octopuses	156	20		176
Pilchard	60			60
Pomfret	453	135		588
Saddle-tailed seaperch - Crimson seaperch	5			5
Scallops	2,911	589		3,500
Squids	3,627	7,154		10,781
Sweetlips	5			5
Whittings	376	165		541
Total	2,427,969	4,015,890	197,940	115,078