

DRAFT 2011 BSCZSF SOUTHERN PROTECTED ZONE SURVEY REPORT

Jayson Semmens and Nick Jones

August 2011

IMAS
INSTITUTE FOR MARINE AND
ANTARCTIC STUDIES



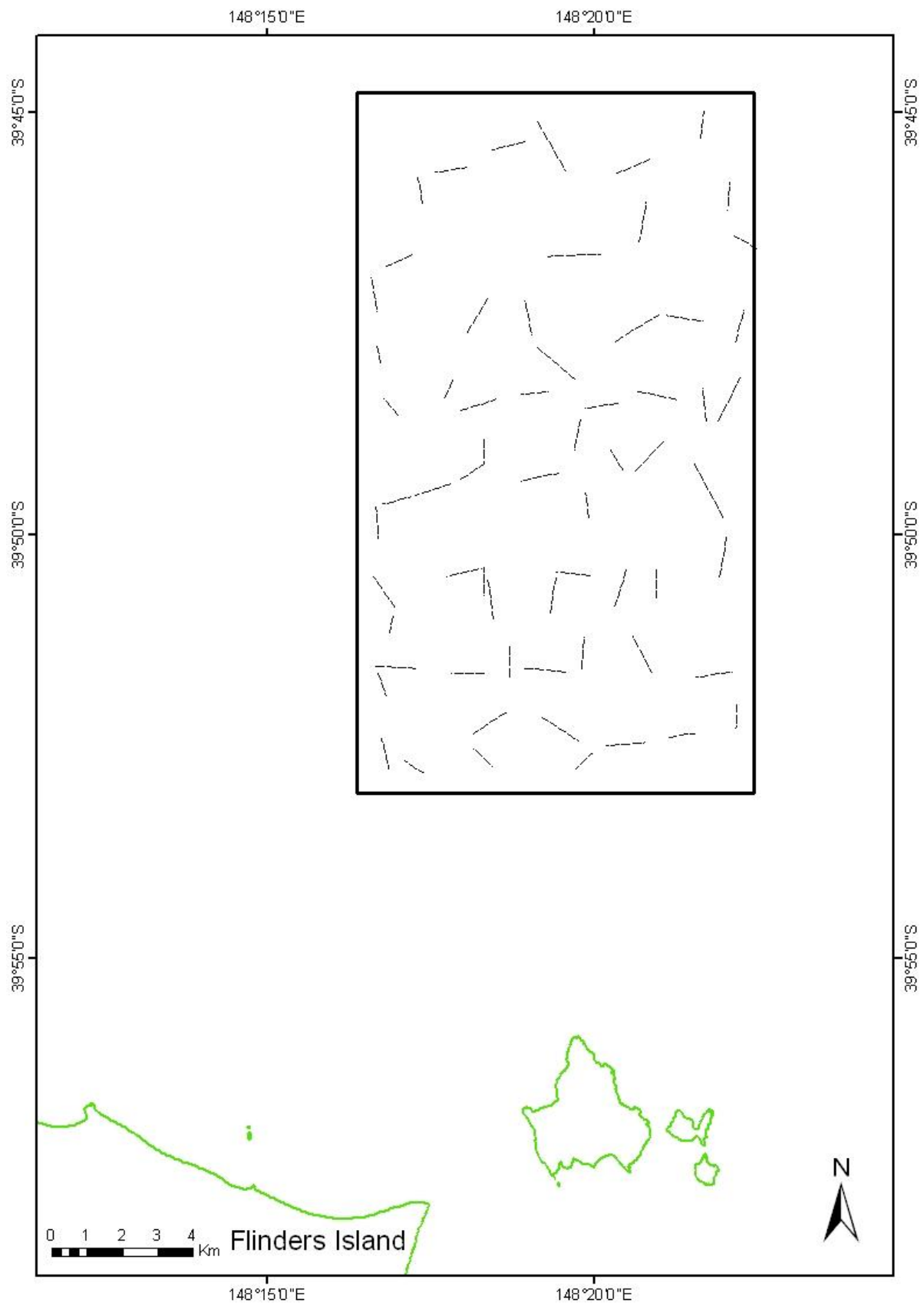


Figure 1: Overview of the 66 sample tows conducted between July 19 and 23 2011 by the FV Brid Voyager in the Southern Protected Zone of the BSCZSF.

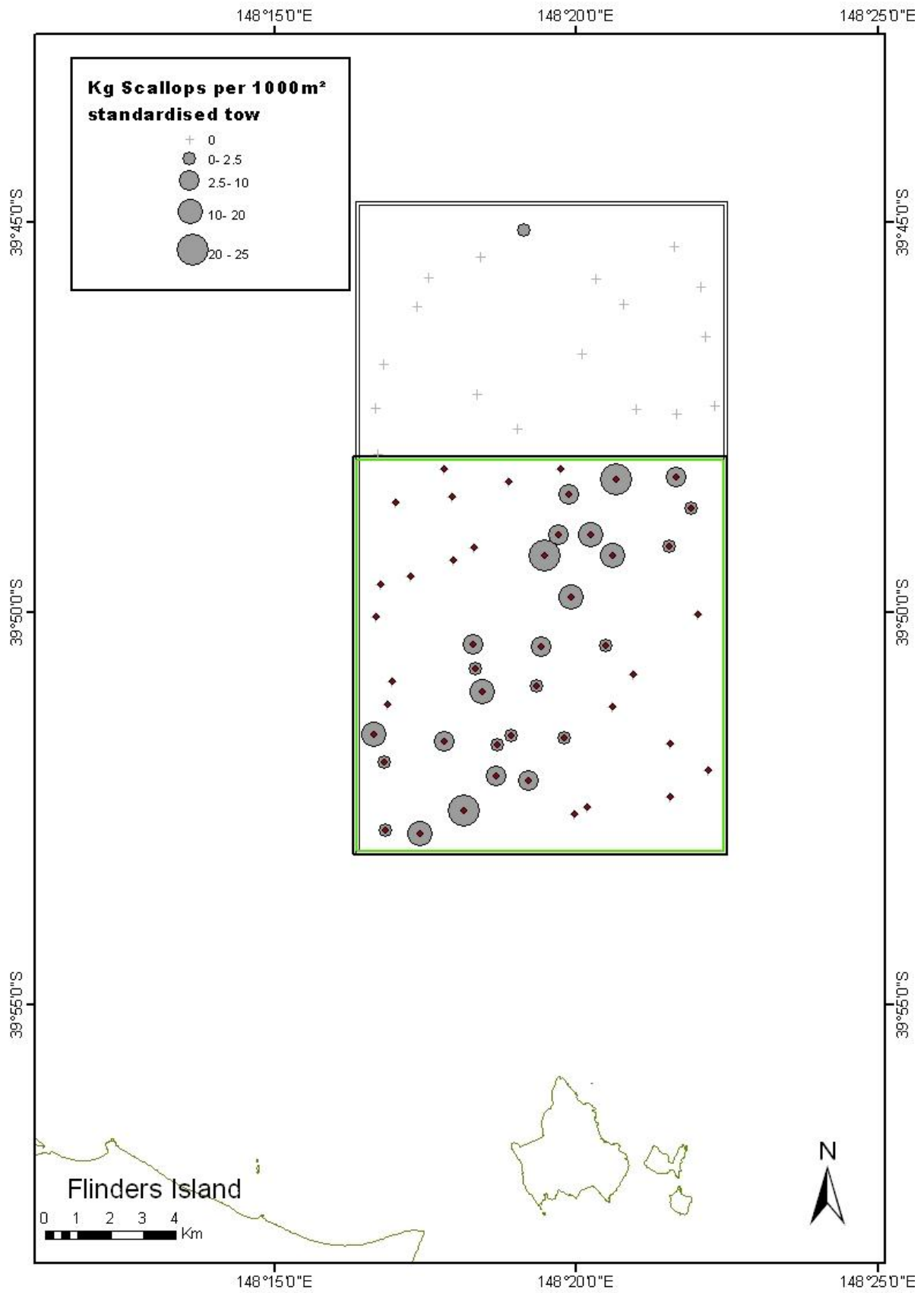


Figure 2: Overview of scallop density (kg scallops per 1000m²) in the survey area. The area bounded by the green box represents the area where all but one of the shots containing scallops occurred.

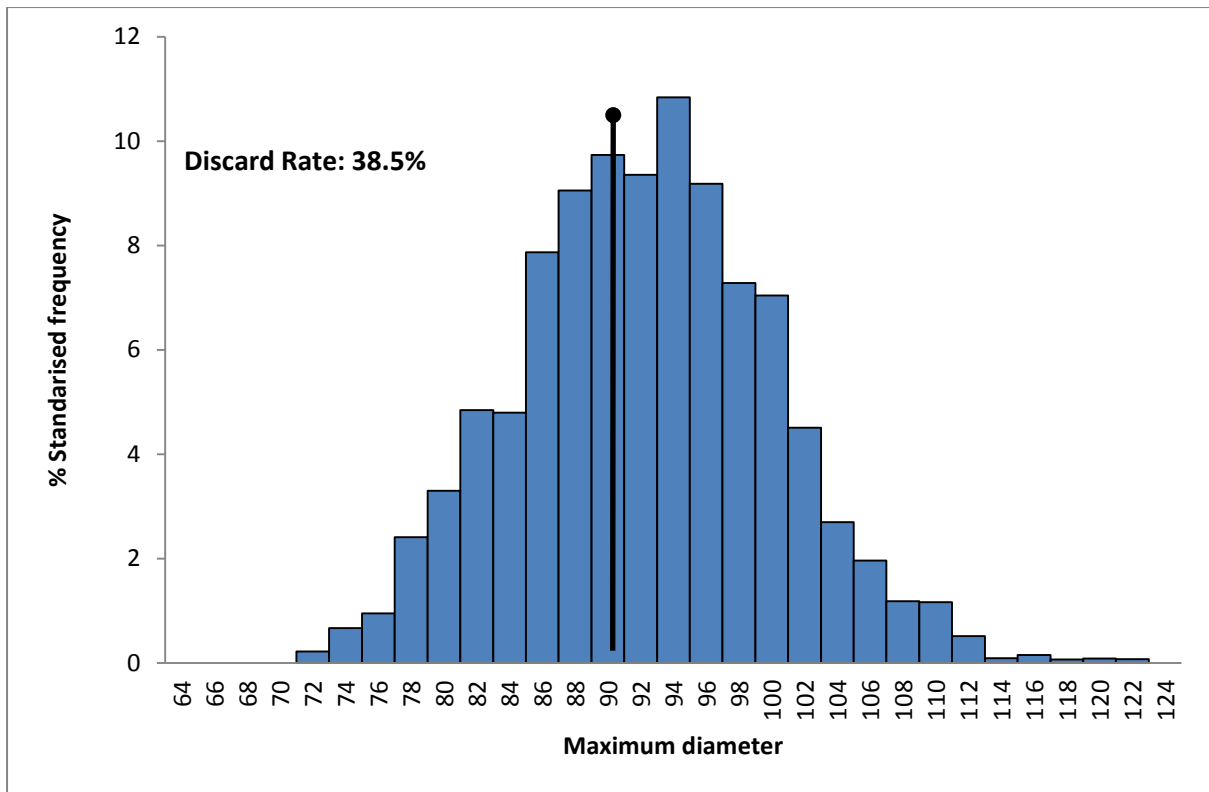


Figure 3: Length frequency distribution for the entire survey area standardised for catch.

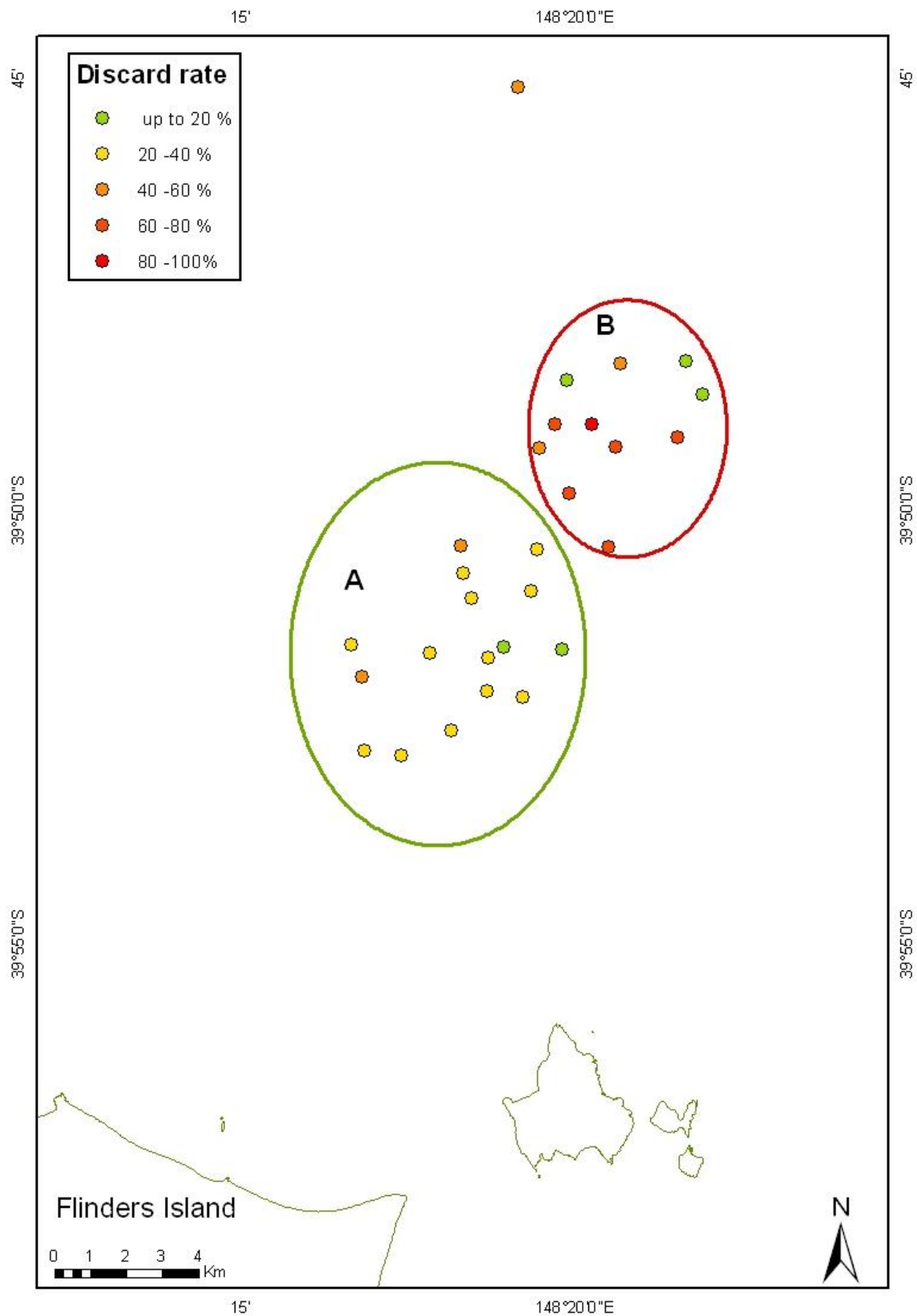


Figure 4: Discard rates for all shots which caught scallops. Two areas; 'A' with relatively low (28.6%), and 'B' with relatively high (52 %) overall discard rates can be identified.

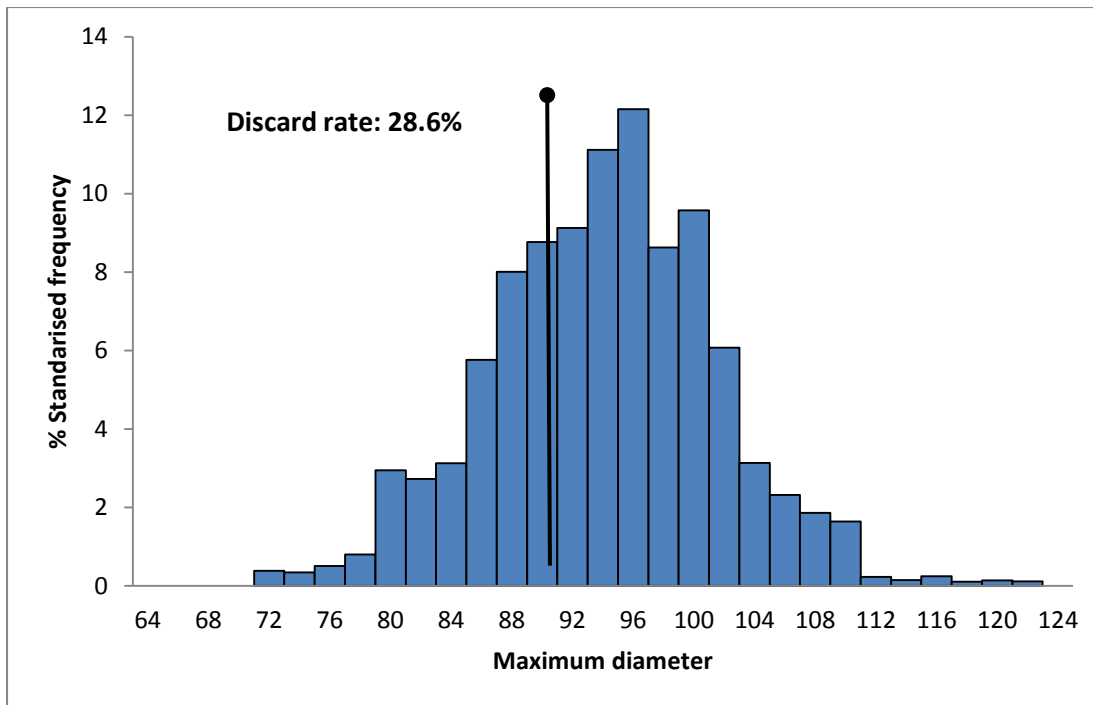


Figure 5: Length frequency distribution for scallops in the lower discard area (A) standardised for catch.

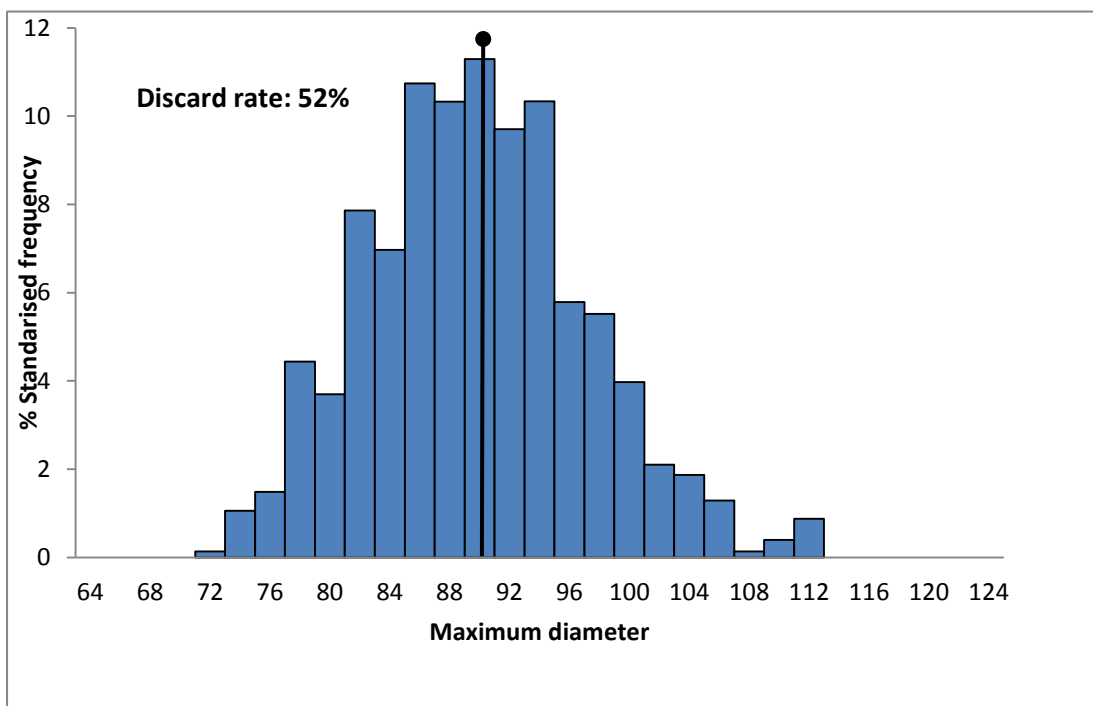


Figure 6: Length frequency distribution for scallops in the higher discard area (B) standardised for catch.

Biomass Estimates

Table 1: Biomass estimates, in tonnes (t), for the entire surveyed region (grey box, Fig. 2), with an area of 226.3 km, at 33% dredge efficiencies (as used for the 2008 biomass estimates - see Harrington, Semmens & Haddon 2008). The upper and lower 95% refer to the confidence intervals.

Estimate	t
Upper 95%	3199.1
Average	2201.9
Lower 95%	1204.6

Table 2: Biomass estimates, in tonnes (t), for the sub-sample area containing the bulk of catches (green box, Fig. 2), at 33% dredge efficiencies (as used for the 2008 biomass estimates - see Harrington, Semmens & Haddon 2008). The upper and lower 95% refer to the confidence intervals. The sub-sample had an area of 140.2 km².

Estimate	t
Upper 95%	2699.5
Average	1879.5
Lower 95%	1059.6