

Assessment work for Eastern Blue Mackerel

Rich Hillary, Andre Punt, & Rich Little,
CSIRO Oceans & Atmosphere

December 2016

Outline

Assessment
work for
Eastern Blue
Mackerel

Rich Hillary,
Andre Punt,
& Rich Little,
CSIRO
Oceans &
Atmosphere

Stock assessment work for Eastern Blue Mackerel

Stochastic Stock Reduction Model (SSRM)

Available data & models

Assessment work for Eastern Blue Mackerel

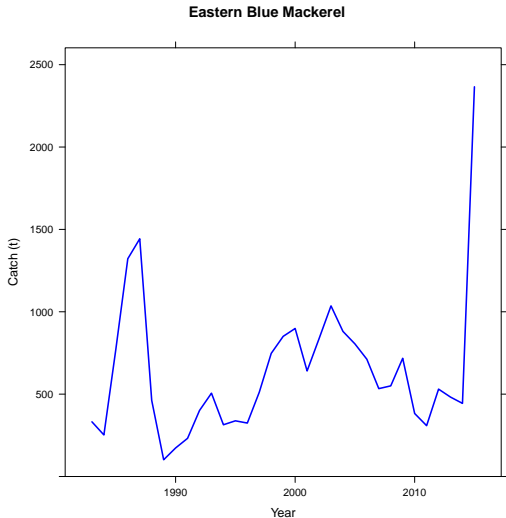
Rich Hillary,
Andre Punt,
& Rich Little,
CSIRO
Oceans &
Atmosphere

- Catch biomass (total) from 1983–2015
- DEPM biomass estimate of SSB for 2014 (*ca.* 83,000t)
- Biological bits (maturity, growth, M etc.)
- Given previous assumed selectivity \Rightarrow SSRMs

Data: catch biomass

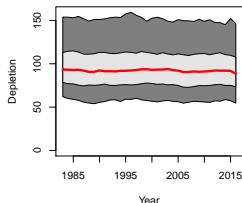
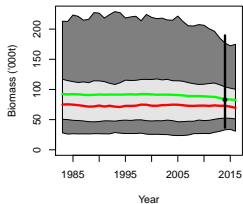
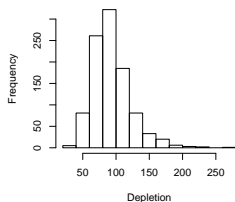
Assessment work for Eastern Blue Mackerel

Rich Hillary,
Andre Punt,
& Rich Little,
CSIRO
Oceans &
Atmosphere



SSRM results (base case) BMK - East

- Summary for $h = 0.59$, $\sigma_r = 0.6$, $\rho = 0$, & $CV_{SSB} = 0.5$:



SSRM summary for EBM

Assessment
work for
Eastern Blue
Mackerel

Rich Hillary,
Andre Punt,
& Rich Little,
CSIRO
Oceans &
Atmosphere

- Current mean depletion range: 0.74–0.94
- Recent” harvest rate $\approx 1\%$... The “dynamic” B_0 depletion
- Interpretation \Rightarrow close to 1